

Verso CF 1300 U/H/V

Nominal air flow, m ³ /h	1400
Panel thickness, mm	50
Unit weight, kg	225
Supply voltage HE, V	3~400
Supply voltage HW, V	1~230
Maximal operating current HE, A	11,7
Maximal operating current HW, A	5,5
Filters dimensions BxHxL, mm	800x400x46-M5
Electric power input of the fan drive at maximum flow rate, W	260
Electric air heater capacity, kW / Δt, °C	4,5/8,9
Control panel	C5.1
Maintenance space, mm	800



The photo is intended for informational purposes only, exact details may vary.

Acoustic data

A-weighted sound power level L_{WA} , dB(A)
at nominal flow rate

Supply inlet	62
Supply outlet	80
Exhaust inlet	62
Exhaust outlet	80
Casing	58

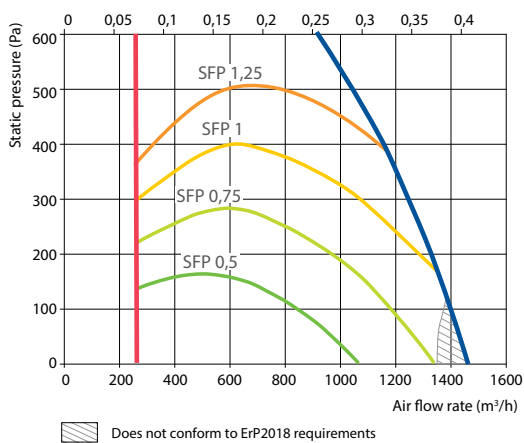
A-weighted sound pressure level L_{pA} , dB(A)

10 m² normally isolated room, distance from casing – 3 m.

Surroundings	47
--------------	----

Performance

Supply air filter F7, exhaust air filter M5



Temperature efficiency

Outside temperature, °C	Winter					Summer		
	-23	-15	-10	-5	0	25	30	35
After heat exchanger, °C	15,3	15,8	16,5	17,2	18,0	22,7	23,8	25,0

indoor +22°C, 10% RH

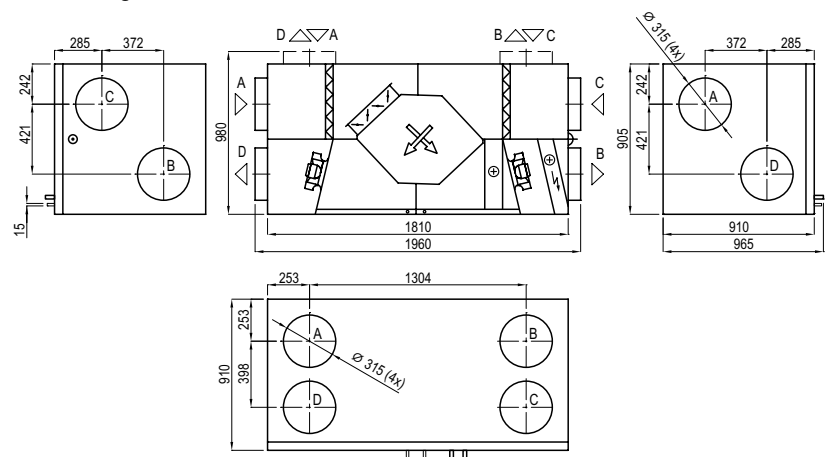
Changeover water heating/cooling exchanger (HCW)

Water temperature in/out, °C	Winter			Summer
	80/60	70/50	60/40	7/12
Capacity, kW	2,9	2,9	2,9	9,3
Flow rate, dm ³ /h	129	128	128	1400
Pressure drop, kPa	2,0	2,0	2,0	61,3
Temperature in/out, °C	15,3/22			25/18
Maximal capacity, kW	16,7	13,5	10,2	12,8
Connection, "				½

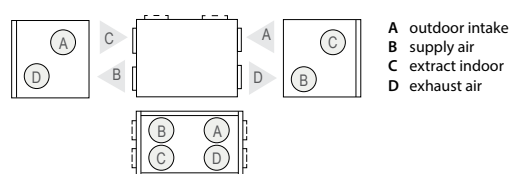
Available versions:

- 1) Electric air heater (HE)
- 2) Changeover water heating/cooling exchanger (HCW)

Shown as right (R1)



Shown as left (L1)



- A outdoor intake
- B supply air
- C extract indoor
- D exhaust air

Accessories (p. 108)

Closing damper	AGUJ-M-315+LF24/LM24
Silencer	A/D AGS-315-100-900-M
	B/C AGS-315-100-1200-M
PPU	PPU-HW-3R-15-1-W2
Water cooler	DCW-1,4-9
2-way valve	VVP47.20-4,0+SSP61
DX cooler	DCF-1,4-10
Cooling unit	MOU-36HFN6-KA8243