

Verso CF 1000 U/H/V

Nominal air flow, m ³ /h	1050
Panel thickness, mm	50
Unit weight, kg	225
Supply voltage HE, V	3~400
Supply voltage HW, V	1~230
Maximal operating current HE, A	9,5
Maximal operating current HW, A	3,3
Filters dimensions BxHxL, mm	800x400x46-M5
Electric power input of the fan drive at maximum flow rate, W	165
Electric air heater capacity, kW / Δt, °C	4,5/11,9
Control panel	C5.1
Maintenance space, mm	800



The photo is intended for informational purposes only, exact details may vary.

Acoustic data

A-weighted sound power level L_{WA} , dB(A)
at nominal flow rate

Supply inlet	56
Supply outlet	73
Exhaust inlet	56
Exhaust outlet	73
Casing	53

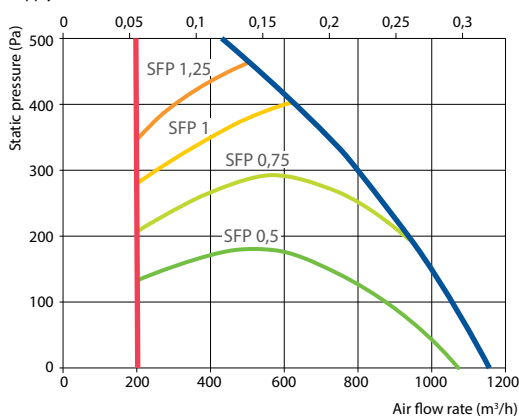
A-weighted sound pressure level L_{pA} , dB(A)

10 m² normally isolated room, distance from casing – 3 m.

Surroundings	42
--------------	----

Performance

Supply air filter F7, exhaust air filter M5



Accessories (p. 108)

Closing damper	AGUJ-M-315-LF24/LM24
Silencer	A/D AGS-315-100-900-M
	B/C AGS-315-100-1200-M
PPU	PPU-HW-3R-15-0,63-W1
Water heater	DCW-0,7-5
2-way valve	VVP47.15-2,5+SSP61
DX cooler	DCF-0,7-5
Cooling unit	MOU-18HFN6-KA8243

Temperature efficiency

Outside temperature, °C	Winter					Summer		
	-23	-15	-10	-5	0	25	30	35
After heat exchanger, °C	15,9	16,3	16,9	17,6	18,2	22,6	23,7	24,9

indoor +22°C, 10% RH

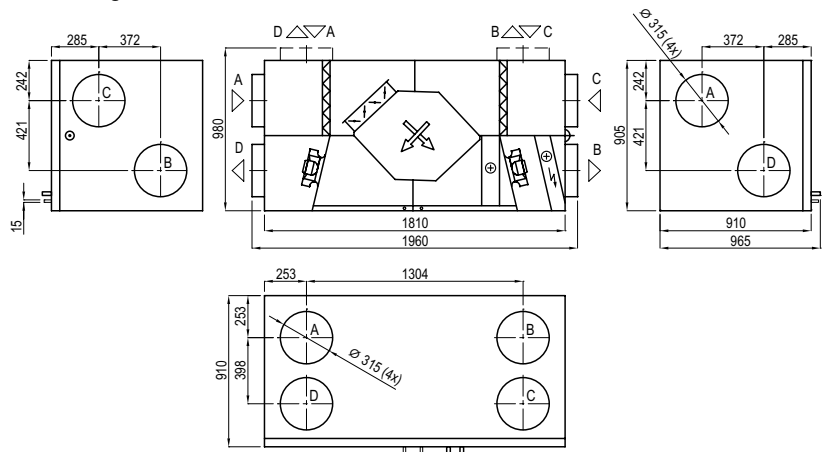
Changeover water heating/cooling exchanger (HCW)

Water temperature in/out, °C	Winter			Summer
	80/60	70/50	60/40	7/12
Capacity, kW	2,0	2,0	2,0	6,6
Flow rate, dm ³ /h	90	90	89,5	1139
Pressure drop, kPa	1,7	1,7	1,8	33,3
Temperature in/out, °C	15,9/22			24,9/18
Maximal capacity, kW	13,5	10,8	8,2	10,2
Connection, "	½			

Available versions:

- 1) Electric air heater (HE)
- 2) Changeover water heating/cooling exchanger (HCW)

Shown as right (R1)



Shown as left (L1)

