

MAR 306

Modular Ice Machine up to 2450 kg

Item #:
Project:
Quantity:



FEATURES

- Scale ice machine, in "compact system" version; built-in unit. Storage bin not supplied, to be purchased separately.
- AISI304 Stainless steel evaporator and ice scraper blade. Redesigned evaporator compartment end-walls.
- Electromechanical control panel.
- Electrical protections, rotation speed & reverse phase controls.
- Low- water sensor protection. Semi-hermetic compressor. Storage bin thermostatic ice level sensor.
- Drive motor / gear reducer with V-Belt drive.
- Stainless steel panels in scotch-brite finish, with rounded corners, easy to remove for maintenance.
- ON/OFF manual switch, with weekly programmable timer.



MAR 306
Scale ice
Residual water content 2%
Thickness 1 or 2 mm

CONDENSING SYSTEM

Remote condenser
Water cooled

REFRIGERANT GAS

R404A

VOLTAGE V/Hz/ph

230/60/3
380/60/3N
400/50/3N
400/60/3

RECOMMENDED BINS

Head	Bins		kg
MAR 306	●	UBH1600	812
	●	UBH2250	1068
	●	SIS1350	613 + 73 + 73

LEGEND:

- ✓ : Perfect combination between ice maker and bin
- : Ice chute cut-out performed upon installation
- CBTxxxxxxx : need additional bin top

Certifications:



OPERATING REQUIREMENTS

	Minimum	Maximum
Air temperature	10°C	43°C
Water temperature	5°C	38°C
Water pressure	1 bar (14 psi)	5 bar (70 psi)
Electrical voltage	-10%	+10%

IMPORTANT NOTICE:
Models and specifications are subject to change without notice. This spec sheet is meant for commercial purpose only. For technical documentation please refer to our service manuals.

Download our free **App Scotsman Ice**
Apple store
Google play
Windows store



www.scotsman-ice.it
www.scotsman-ice.com

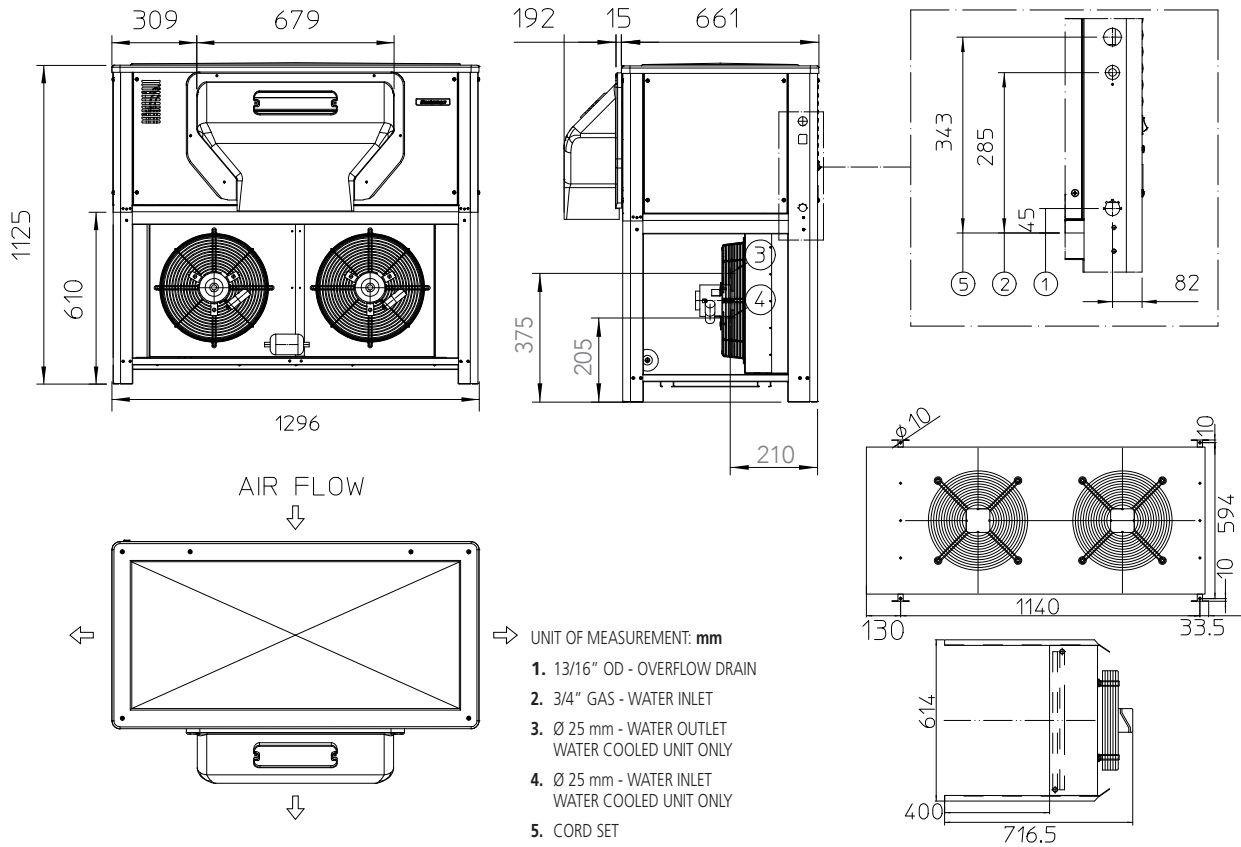
Modular Ice Machine up to 2450 kg

MAR 306

Modular Ice Machine up to 2450 kg

Item #:
Project:
Quantity:

Modular Ice Machine up to 2450 kg



UNIT DATA		Cooling Requirements (Te -25°C; Tc +45.0°C)		Circuit wires		Max. fuse size		
Size (W x D x H)	Net weight	Version	Voltage	Btu/h	W	No.	Ømm ²	A
1296 x 676 x 1125 mm	393 kg	MAR 306 ASR	400/50/3N	44358	13000	5	4.0	32
		MAR 306 ASR	230/60/3	44358	13000	4	10.0	100
		MAR 306 ASR	380/60/3N	44358	13000	5	4.0	32
		MAR 306 WS	400/50/3N	44358	13000	5	4.0	32
		MAR 306 WS	400/60/3	44358	13000	4	4.0	32

			24 h ice production kg °C Amb. / °C Water					Energy consumption (*)		Water usage(*)	Instant power	
Version	Condensation	Voltage	10°C/10°C		21°C/10°C		32°C/21°C		kWh/100 kg	kWh/24h	l/h	W
			1 mm	2 mm	1 mm	2 mm	1 mm	2 mm				
MAR 306 ASR	Remote	400/50/3N	2350	2050		1980		1700	11.6	200.0	68.8	8750
MAR 306 ASR	Remote	230/60/3	2350	2050		1980		1700	13.0	215.0	68.8	9100
MAR 306 ASR	Remote	380/60/3N	2350	2050		1980		1700	11.6	200.0	68.8	8150
MAR 306 WS	Water	400/50/3N	2450	2000					11.6	200.0	416.7	10000
MAR 306 WS	Water	400/60/3	2450	2000					11.6	200.0	416.7	10000

(*) Data refer to 32°C Amb. / 21°C Water temperature conditions