

# MAR 206

**Scotsman**  
Ice Systems

## Modular Ice Machine up to 1850 kg

Item #:

Project:

Quantity:



### FEATURES

- Scale ice machine, in "compact system" version; built-in unit. Storage bin not supplied, to be purchased separately.
- AISI304 Stainless steel evaporator and ice scraper blade. Redesigned evaporator compartment end-walls.
- Electromechanical control panel.
- Electrical protections, rotation speed & reverse phase controls.
- Low- water sensor protection. Semi-hermetic compressor. Storage bin thermostatic ice level sensor.
- Drive motor / gear reducer with V-Belt drive.
- Stainless steel panels in scotch-brite finish, with rounded corners, easy to remove for maintenance.
- ON/OFF manual switch, with weekly programmable timer.



MAR 206  
Scale ice  
Residual water content 2%  
Thickness 1 or 2 mm

### CONDENSING SYSTEM

Air cooled  
Water cooled

### RECOMMENDED BINS

| Head    | Bins |         | kg            |
|---------|------|---------|---------------|
| MAR 206 | ●    | UBH1600 | 812           |
|         | ●    | UBH2250 | 1068          |
|         | ●    | SIS1350 | 613 + 73 + 73 |

### REFRIGERANT GAS

R404A

### VOLTAGE V/Hz/ph

230/60/3  
380/60/3N  
400/50/3N

### LEGEND:

- ✓ : Perfect combination between ice maker and bin  
● : Ice chute cut-out performed upon installation  
CBTxxxxxxxx : need additional bin top

Certifications:



### OPERATING REQUIREMENTS

|                    | Minimum        | Maximum        |
|--------------------|----------------|----------------|
| Air temperature    | 10°C           | 43°C           |
| Water temperature  | 5°C            | 38°C           |
| Water pressure     | 1 bar (14 psi) | 5 bar (70 psi) |
| Electrical voltage | -10%           | +10%           |

**IMPORTANT NOTICE:**  
Models and specifications are subject to change without notice. This spec sheet is meant for commercial purpose only. For technical documentation please refer to our service manuals.

Download our free **App Scotsman Ice**  
Apple store  
Google play  
Windows store

DOWN LOAD

[www.scotsman-ice.it](http://www.scotsman-ice.it)  
[www.scotsman-ice.com](http://www.scotsman-ice.com)

Modular Ice Machine up to 1850 kg

15 June 2018

# MAR 206

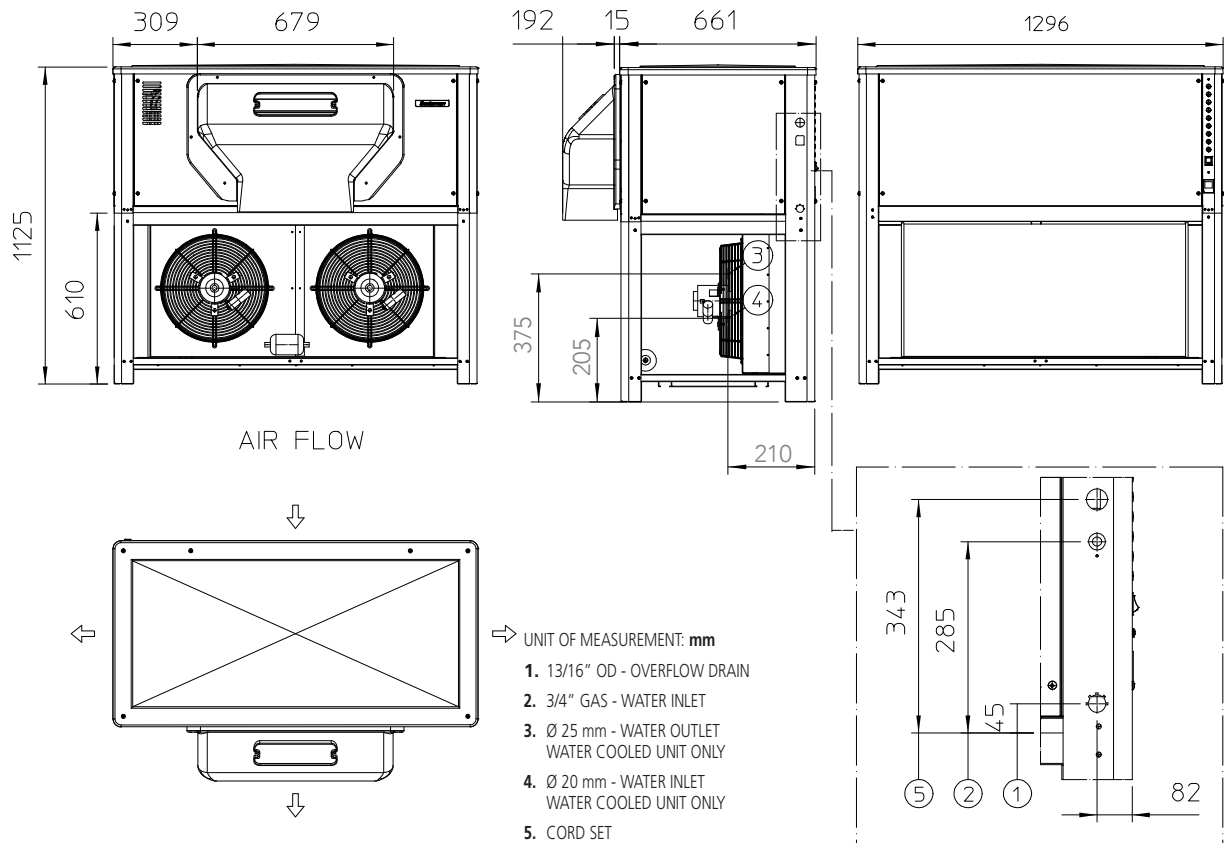
**Scotsman**  
Ice Systems

Modular Ice Machine up to 1850 kg

Item #:

Project:

Quantity:



## UNIT DATA

Size (W x D x H) 1296 x 676 x 1125 mm  
Net weight 330 kg

## SHIPPING DATA

Carton (W x D x H) 1410 x 790 x 1250 mm  
Weight 353 kg

|            |           |  | Cooling Requirements<br>(T <sub>e</sub> -25°C; T <sub>c</sub> +45.0°C) |      | Circuit wires |                  | Max. fuse size |
|------------|-----------|--|--|------|---------------|------------------|----------------|
| Version    | Voltage   |  | Btu/h  | W    | No.           | Ømm <sup>2</sup> | A              |
| MAR 206 AS | 400/50/3N |  | 23885  | 7000 | 5             | 4.0              | 25             |
| MAR 206 AS | 230/60/3  |  | 23885  | 7000 | 4             | 10.0             | 40             |
| MAR 206 AS | 380/60/3N |  | 23885  | 7000 | 5             | 2.5              | 25             |
| MAR 206 WS | 400/50/3N |  | 23885  | 7000 | 5             | 4.0              | 25             |
| MAR 206 WS | 230/60/3  |  | 23885  | 7000 | 4             | 10.0             | 40             |

|            |              |           | 24 h ice production kg<br>°C Amb. / °C Water |      |           |      | Energy consumption (*) |      | Water usage(*) | Instant power |
|------------|--------------|-----------|--|------|-----------|------|------------------------|------|----------------|---------------|
| Version    | Condensation | Voltage   | 10°C/10°C                                    |      | 21°C/10°C |      | 32°C/21°C              |      | l/h            | W             |
|            |              |           | 1 mm   | 2 mm | 1 mm      | 2 mm | 1 mm                   | 2 mm |                |               |
| MAR 206 AS | Air          | 400/50/3N | 1720   | 1548 | 1700      | 1530 | 1450                   | 1305 | 54.2           | 5400          |
| MAR 206 AS | Air          | 230/60/3  |  | 0    |           | 0    |                        | 0    | 54.2           | 5400          |
| MAR 206 AS | Air          | 380/60/3N |  | 0    |           | 0    |                        | 0    | 54.2           | 5400          |
| MAR 206 WS | Water        | 400/50/3N | 1850   | 1665 | 1850      | 1665 | 1680                   | 1512 | 416.7          | 5400          |
| MAR 206 WS | Water        | 230/60/3  |  | 0    |           | 0    |                        | 0    | 416.7          | 5400          |

(\*) Data refer to 32°C Amb. / 21°C Water temperature conditions