

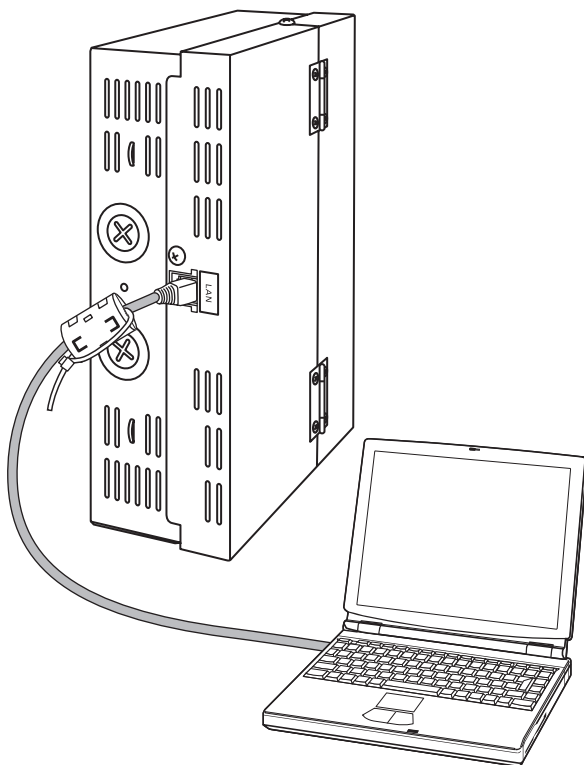
Centralized Control System CZ-CWEBC2

Web Interface

Thank you for choosing the CZ-CWEBC2 Web Interface.

Before using the system, be sure to read this manual carefully. In particular, be sure to read the "Important Safety Instructions".

After reading this manual, store it in a convenient place.



Contents

| | |
|--|----|
| 1. Important Safety Instructions | 3 |
| 2. Features of the System..... | 7 |
| 3. System Configuration | 8 |
| 4. Names and Functions of Parts..... | 9 |
| 5. Preparations and Login | 12 |
| 6. Status/Control | 14 |
| 7. Maintenance | 21 |
| 8. Initial Settings | 24 |
| 9. Auxiliary Settings..... | 35 |
| 10. Supplementary Information..... | 45 |
| 11. Troubleshooting | 48 |
| 12. Care..... | 50 |
| 13. Specifications..... | 51 |

Centralized Control System

CZ-CWEBC2

Web Interface

Operation Manual

Contents

| | |
|--|-----------|
| 1 Important Safety Instructions | 3 |
| 2 Features of the System | 7 |
| 3 System Configuration | 8 |
| 4 Names and Functions of Parts | 9 |
| 5 Preparations and Login | 12 |
| 5.1 Turning the Web Interface On | 12 |
| 5.2 Checking the PC..... | 12 |
| 5.3 Log-in..... | 12 |
| 6 Status/Control | 14 |
| 6.1 Displaying general information by tenant..... | 14 |
| 6.2 Displaying detailed information by tenant..... | 19 |
| 6.3 All Units..... | 20 |
| 7 Maintenance | 21 |
| 7.1 Alarm Log | 21 |
| 7.2 Sent Mail Log | 22 |
| 8 Initial Settings | 24 |
| 8.1 Date and Time Setting | 24 |
| 8.2 Unit/Tenant..... | 26 |
| 8.3 WEB Settings..... | 28 |
| 8.4 User Settings | 30 |
| 9 Auxiliary Settings | 35 |
| 9.1 Program Timer | 35 |
| 9.2 Tenant holiday/Timer special day | 37 |
| 9.3 Prohibiting remote control use | 39 |
| 9.4 Other settings | 41 |
| 10 Supplementary Information | 45 |
| 11 Troubleshooting | 48 |
| 12 Care | 50 |
| 13 Specifications | 51 |

| |
|----------------------------|
| Main 1 Sub 1 |
| Main 1 Sub 2 |
| Main 1 Sub 3 |
| Main 2 Sub 1 |
| Main 2 Sub 2 |
| Main 3 Sub 1 |
| Main 3 Sub 2 |
| Main 3 Sub 3 |
| Main 3 Sub 4 |
| Main 4 Sub 1 |
| Main 4 Sub 2 |
| Main 4 Sub 3 |
| Main 4 Sub 4 |

[Note]

The screen display examples in this manual are for explanation use and may be different from the displays of air conditioners actually used.


The screen displays may also vary, depending on the operating system of your PC and the Web browser you use.


1 Important Safety Instructions

Before using the system, be sure to read these “Important Safety Instructions”.


The precautions given in this manual consist of specific “ Warnings” and “ Cautions”. They provide important safety related information and are important for your safety, the safety of others, and trouble-free operation of the system. Be sure to strictly observe all safety procedures.

- The labels and their meanings are as described below.


 **Warning** This refers to a hazard or unsafe procedure or practice which can result in severe personal injury or death.

 **Caution** This refers to a hazard or unsafe procedure or practice which can result in personal injury or product or property damage.

- Meaning of symbols

 Indicates “Warning” or “Caution”.






 Indicates “Prohibited”.

 Indicates an action that should always be performed.

- After reading this manual, save it in a convenient place.

Be sure to provide this manual to any person who may use the product.

Installation Precautions

|  Warning | |
|--|--|
| <p>Do not install by yourself.</p> <p> Installation should always be performed by your dealer or a professional service provider. Electric shock or fire may result if an inexperienced person performs any installation or wiring procedures incorrectly.</p> | <p>Use only specified air conditioners.</p> <p> Always use only air conditioners specified by dealer. Installation should always be performed by a professional service provider. Electric shock or fire may result if an inexperienced person performs any installation or wiring procedures incorrectly.</p> |
| <p>Electrical work must be carried out by qualified personnel.</p> <p> Contact your dealer for installation. Do not attempt to install the product by yourself.</p> | <p>Avoid installation in the following locations:</p> <p> Locations subject to inflammable gas leakage</p> |

1 Important Safety Instructions

Caution

Do not install in damp locations or locations subject to vibrations.



Damage to the system can result.

Do not install under direct sunlight or in places near heat sources.



Damage to the system can result.

Do not install near sources of noise.



Malfunctions can result.
Elevators, automatic doors,
industrial machinery, etc.

Avoid static electricity during cabling work.



Before starting cabling work,
touch ground to discharge static
electricity from the body.

Avoid installation in the following locations:



- Near beaches or other places with a large amount of salt
- Hot springs or other locations subject to sulfuric gas
- Locations subject to water and oil (including industrial lubricants) sprays and high humidity
- Locations with large changes in voltage
- Near machines generating electromagnetic waves
- Locations close to organic solvents

Keep televisions, radios, PCs, etc, at least 1 m away from the Centralized Control System, indoor units, and remote controllers.



Picture breakup and noise can occur.

Do not use heaters near the Centralized Control System.



The Centralized Control System may malfunction because the temperature becomes outside the range of the operating temperature for the system.

Use remote controllers or system controllers together.



Should the Centralized Control System fail, operation of air conditioners is disabled with the Centralized Control System. Be sure to use the remote controllers or system controllers together.

1 Important Safety Instructions

Precautions for Use

Warning

Do not touch switches with wet hands.



Prohibited

Electric shock and damage to the system can result.

Protect the Web Interface from water.



Prohibited

Damage to the system can result.

Stop the system and turn the power off if you sense unusual smells or other irregularities.



Turn off the power.

Continuing operation when the system is out of order can result in electric shock, fire, and damage to the system. Contact your dealer.

Caution

Do not drop the system or subject it to strong shocks.



Prohibited

Damage to the system can result.

Use only fuses with the correct capacity.



Prohibited

Use of pins or copper wire can result in fire and damage to the system.

Use only the specified power source.



Use of any other power source can result in fire and damage to the system. Use single-phase 100-240 V AC power.

1 Important Safety Instructions

Moving and Repair Precautions

Warning

Do not disassemble or repair.



Prohibited

Never disassemble or repair the system by yourself. Contact your dealer for repair. Electric shock or fire may result if an inexperienced person attempts to repair the system.

Contact your dealer before moving the system.



Contact your dealer

Contact your dealer or a professional service provider about moving and reinstalling the system. Electric shock or fire may result if an inexperienced person performs any installation procedures incorrectly.

2 Features of the System

The Web Interface is a centralized air conditioning management system dedicated to PAC and GHP for small-sized buildings.

Operations and status monitoring of air conditioners can be performed by a customer's PC after logging into the Web Interface.

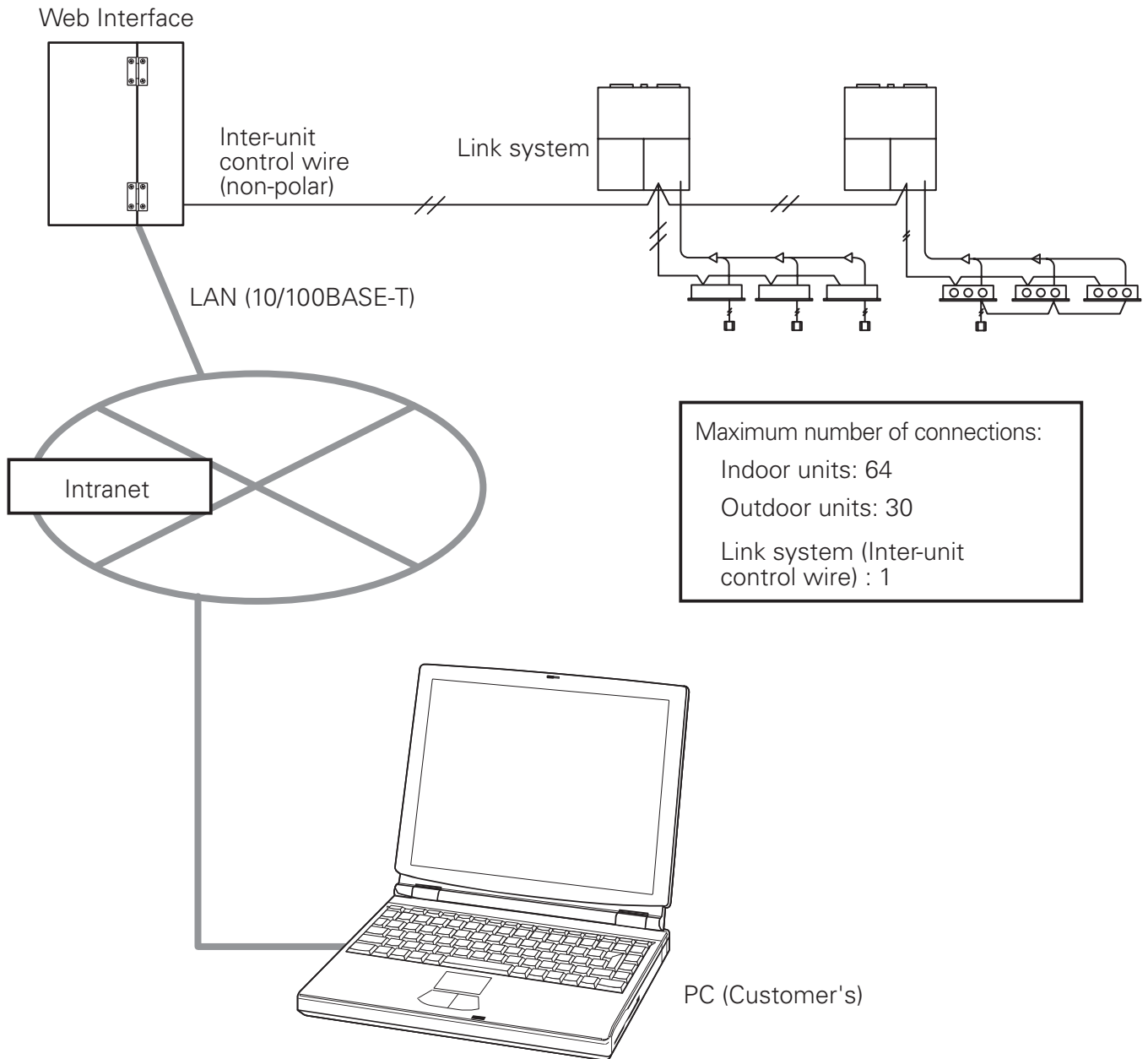
- Number of connectable units
 - Up to 64 indoor units can be connected to one Web Interface.
 - Up to 30 outdoor units can be connected.
- Display
 - No display unit is provided with this product. Operations are performed from and indications are displayed on a customer's PC after login.
- Operation functions
 - Start and stop, temperature settings, operation mode selection, fan speed settings, fan direction settings, prohibition of use of remote controllers, ventilation, and resetting of filter cleaning sign
- Operation monitoring
 - Monitoring of operation status (operating/stopped, operation mode, etc.) and alarms
 - Monitoring of filter cleaning signs
 - Display of alarm logs
- Program timers
 - Up to 50 types of weekly timers can be programmed by combining 50 types of daily timers (50 times per day).
 - Programs for a tenant holiday and five types of timer special days can be set.
- Supported languages
 - The following languages are supported, and you can select a language when logging in by entering a language code:
 - English
 - French
 - German
 - Italian
 - Portuguese
 - Spanish

Terms and abbreviations used in this manual and in the system software

| Full term | Abbreviation |
|-----------------------------|---|
| Outdoor unit system address | Outdoor unit system, Outdoor unit, Outdoor system, Outdoor, O/D |
| Indoor unit address | Indoor unit, Indoor, I/D |
| Tenant number | Tenant No., Tenant |
| Unit name | Unit |
| Central control address | Central address, CNTR |

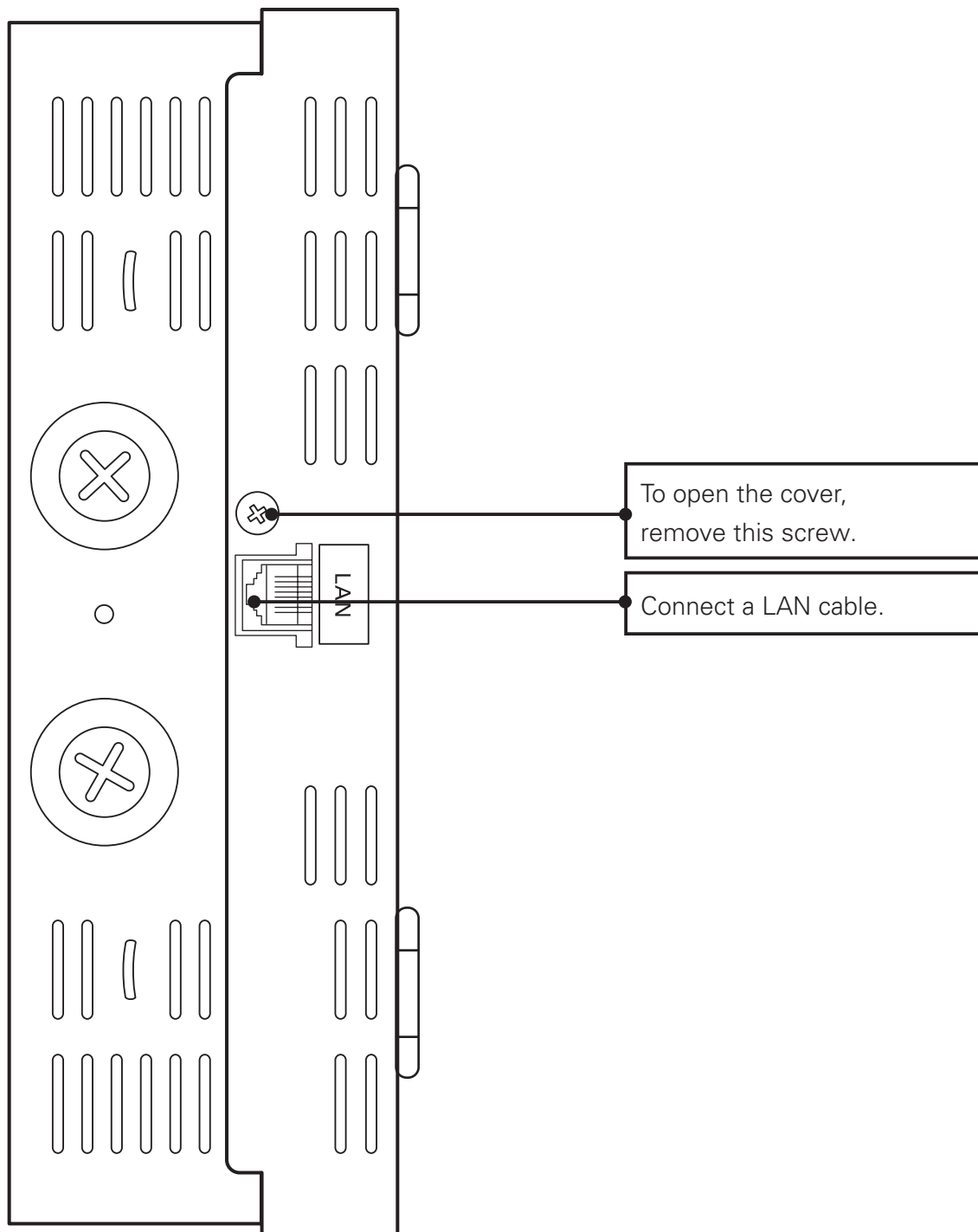
3 System Configuration

System Configuration Example



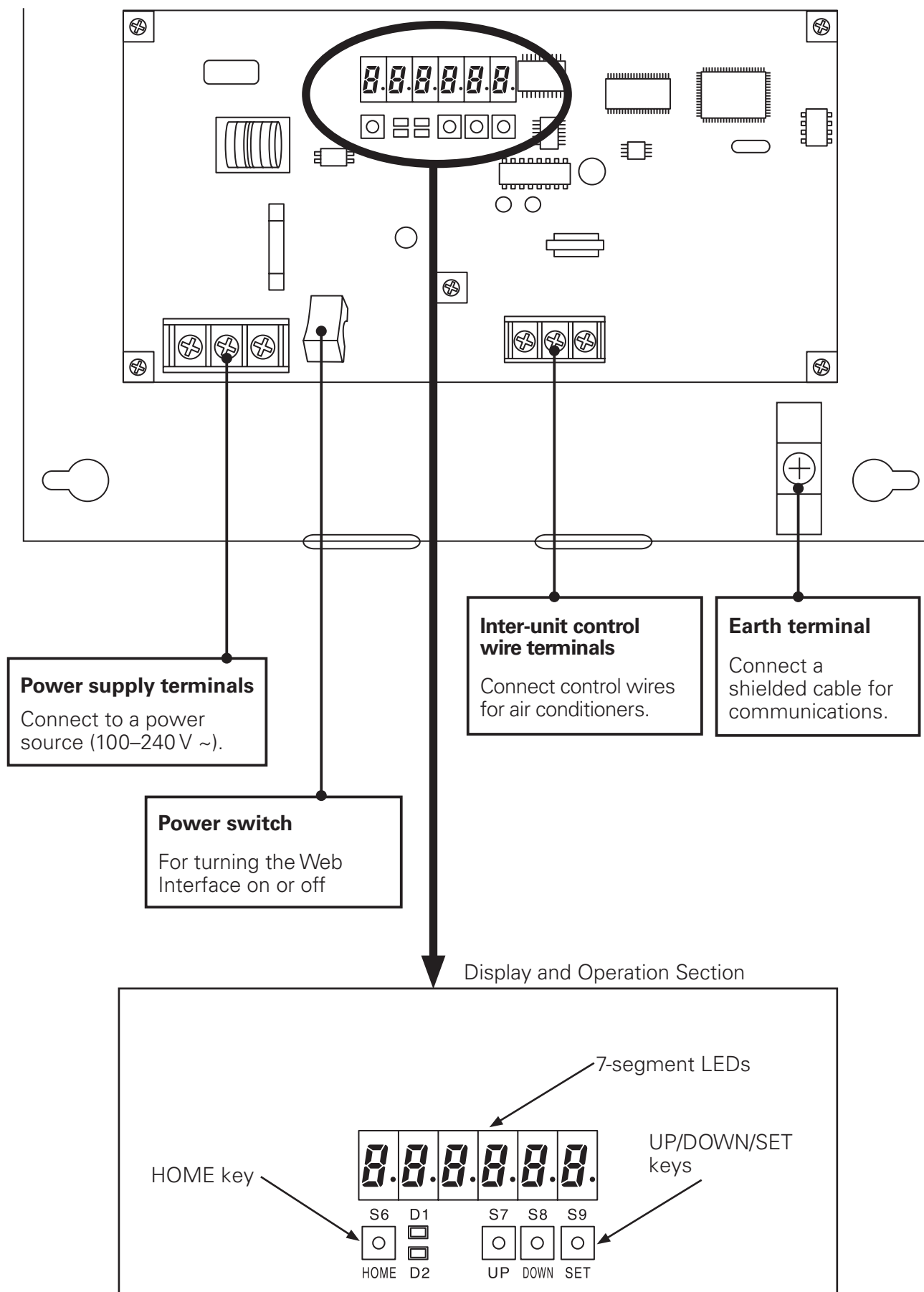
4 Names and Functions of Parts

- Exterior



4 Names and Functions of Parts

- Under the cover



4 Names and Functions of Parts

[Notes on Connecting a LAN cable]

- Use a LAN cable of Category 5* or higher standards.
- Be sure to attach the supplied ferrite core at one end of the LAN cable (Web Interface side). Use a cable tie to make sure the ferrite core stays in place.
- Take security measures, such as installing a firewall, in order to protect this system against external unauthorized access.
- For details on connections and settings, consult the network administrator of the field site.

*Category 5

The standards for telecommunications cabling systems defined by the Telecommunications Industry Association (TIA) and the Electronic Industries Alliance (EIA). Up to 100 MHz frequencies can be used for telecommunications.

Straight and cross cables can be used. Straight cables are used for connections between a PC and a hub, and the Web Interface and the hub. Cross cables are used for directly connecting the Web Interface and a PC.

5 Preparations and Login

5.1 Turning the Web Interface On

After checking the connection with the air conditioners and making sure that **all the air conditioners are ON**, set the Power switch of the Web Interface to ON.

5.2 Checking the PC

The following environment is required for a customer's PC to access the Web Interface for operations of air conditioners:

(The system may not function properly in an environment other than that mentioned below.)

- (1) Browser : Microsoft Internet Explorer 6.0
- (2) Java applet : Sun Microsystems Java Plugin Ver1.4.2
 - * Free downloading is possible from <http://www.java.com/ja/download/manual.jsp>.
- (3) Communications protocol : IPV4 (IPV6 not supported)
- (4) Display resolutions : XGA (1024 × 768 dots) or higher recommended

5.3 Log-in

Enter the following in the address bar of the Web browser on the PC:

http://[① or ②]/sacwww/index_[③].asp

- ① IP address : IP address that has been set for the Web Interface unit
The factory default settings are "192.168.1.1" and the DHCP "Invalid"
- ② ID name : "Device Name" that has been set for the Web Interface unit
The ID name is required when the DHCP server is to be used.
- ③ Language code (Enter with one-byte characters.)
 - English: en French: fr German: de
 - Italian: it Portuguese: pt Spanish: es

[Example]

In a case where the IP address of the Web Interface is "10.31.139.212" and you are accessing English pages

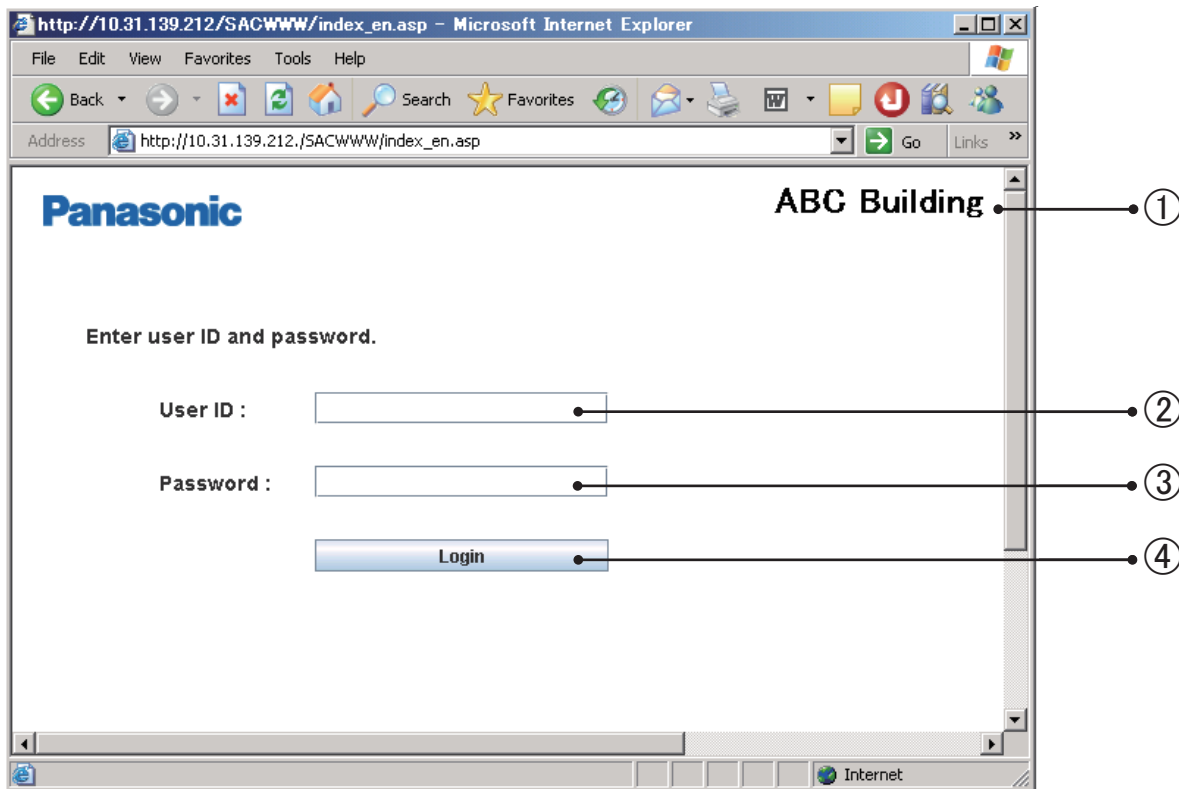
http://10.31.139.212/sacwww/index_en.asp

In a case where a DHCP server is used and the ID name (device name) of the Web Interface is "WindowsCE0"

http://WindowsCE0/sacwww/index_en.asp

5 Preparations and Login

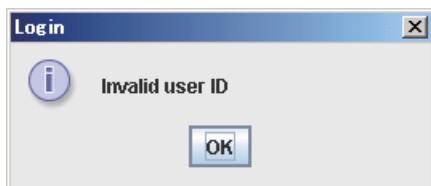
If the network works properly, the following login screen is displayed:



Log in using the user ID and password that have been set for the Web Interface.

- ① The "Site name" that has been set for the Web Interface is displayed.
- ② Enter the "User ID" that has been set for the Web Interface.
- ③ Enter the "Password" that has been set for the Web Interface.
- ④ Click on this button to log in.

If a wrong user ID or password is entered, the following message will be displayed:



After login is executed properly, the "Each tenant" screen (next page) will be displayed.

At the factory, the Administrator user shown below is registered.
After logging in using this administrator user account, change the password:*

User ID : administrator

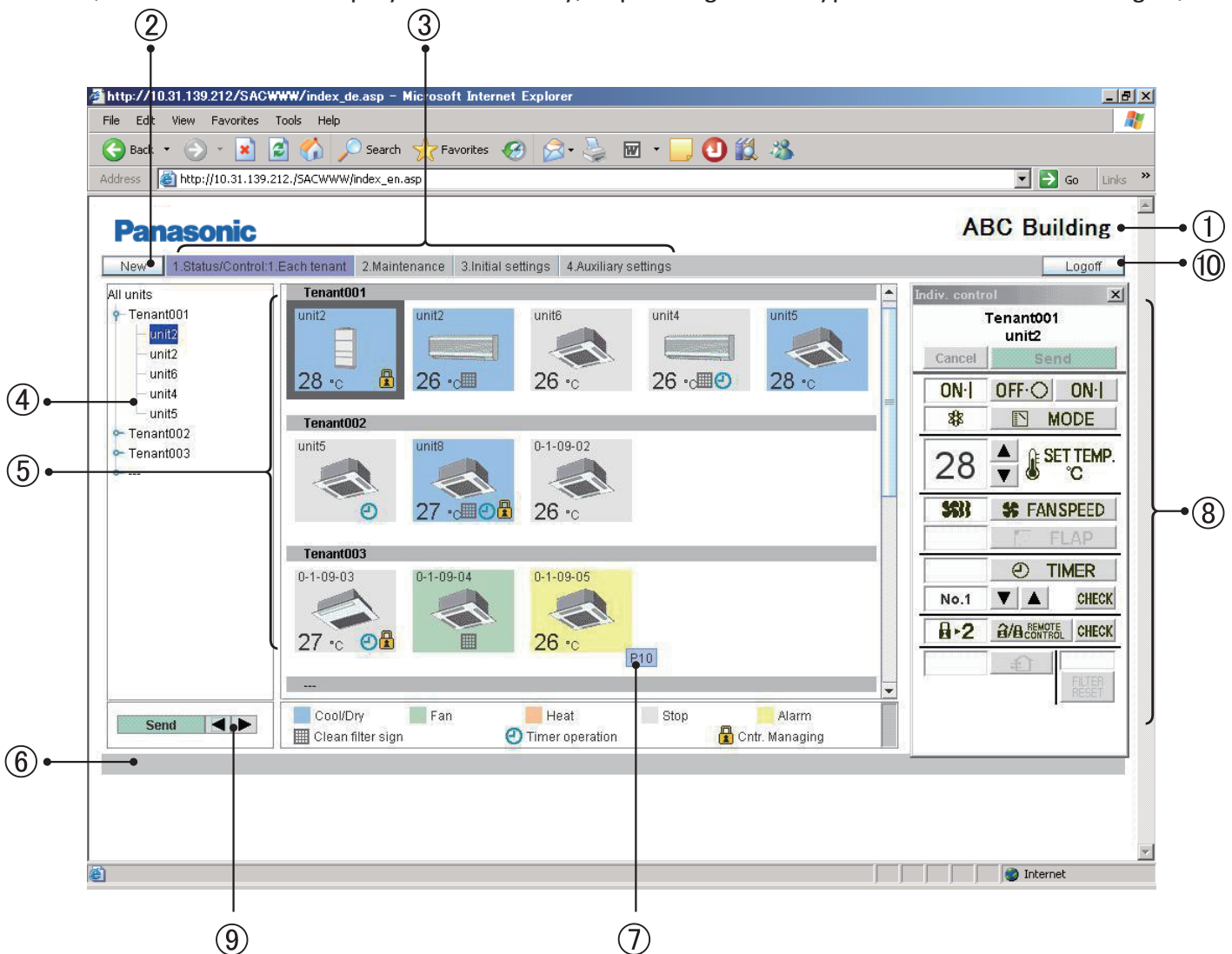
Password : admin

*For details on how to change the password, see "8.4 User Settings"

6.1 Displaying general information by tenant

When you log in the Web Interface, or when “1. Status/Control: 1. Each tenant” is selected from the menu, the screen shown below is displayed.

(The details of the displayed screen vary, depending on the type of account used for login.)



In a case of group control, only the main units will be displayed.

① Site name

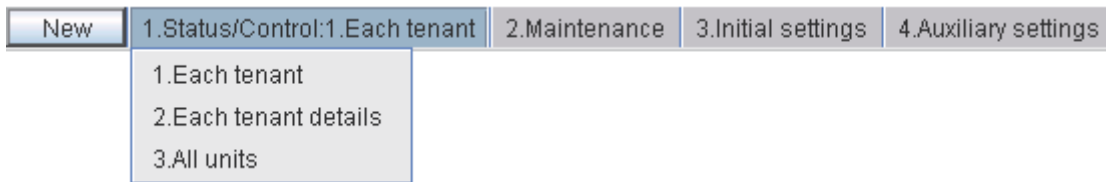
The “Site name” that has been specified on the “WEB settings” screen (Main ³ Sub ³) is displayed.

② “New” button

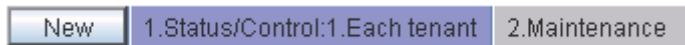
For updating the data on the screen to the latest data. This button is displayed on every screen.

③ Menu (The displayed menu varies, depending on the type of account used for login.)
Select a screen by displaying the pulldown menu, as shown below.

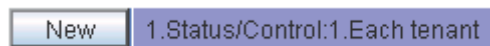
★ Menu for the “Admin.” (Administrator) user



★ Menu for a “Special” user



★ Menu for a “General” user



④ Tree view section

A tree view of relationships among the indoor units that are connected with the Web Interface and tenants is displayed.

Indoor units and tenants to be selected vary, according to which part of the tree you click on. Each indoor unit is selected when an indoor unit name (highlighted part in the screen example) is clicked on.

When a tenant name is clicked on, all the units belonging to the tenant are selected.

All indoor units are selected when the top line (“All units” in the screen example) of the tree is clicked on.

According to the type of account used for login (Admin, Special, or General), only the operable tenants will be displayed.

⑤ Icon display section

The indoor units connected with the Web Interface are displayed with icons.

For details on the meanings of colors and symbols of the icons, see the legend displayed below the icon display section.

When an indoor unit icon is clicked on, that indoor unit is individually selected, and the selected indoor-unit icon is indicated with an inversed frame.

When a tenant name is clicked on, all the indoor units belonging to that tenant are selected, and all the indoor-unit icons are indicated with highlighted frames.

While any of the icons is selected, the display for the corresponding remote controller (⑧) is displayed.

⑥ Notification column

The communication status between the Web browser and the Web Interface is displayed.

For example, while a screen is being updated, “Updating” is displayed.

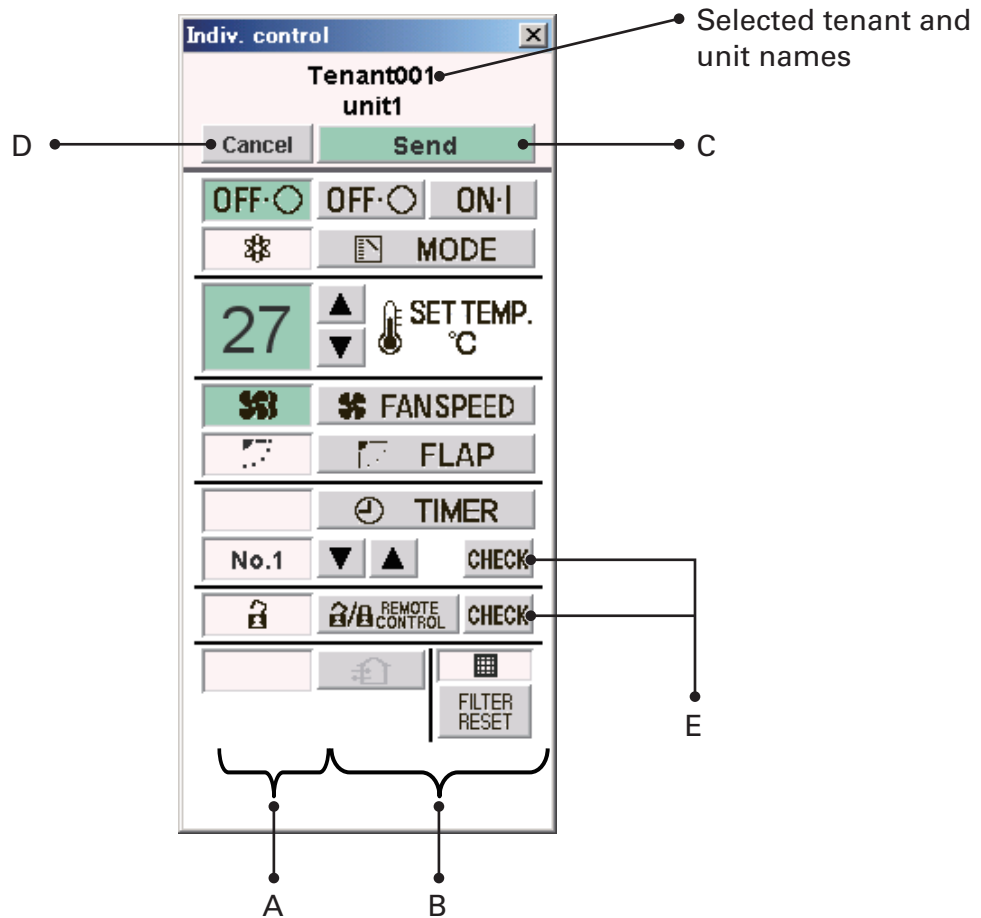
When settings for an indoor unit are changed, while those data are being sent, “Sending” is displayed.

⑦ Alarm code display

If you move the cursor onto the icon of the indoor unit from which an alarm has been issued, an alarm code will be displayed after about 1 second.

⑧ Remote control window

If any of the indoor units is selected, the remote control window shown below will be displayed for detailed setting modifications.



A: Status/Control screen section

The status and operations of the selected air conditioner are displayed.

If a setting is changed, the background color of the changed item will turn green, and the "Send" button will be enabled.

In the above example, the background color for the items of start/stop, setting temperature, and fan speed is green.

When the "Send" button is clicked on, data for all changes are enabled and sent to the Web Interface.

To disable the changes made, click on the "Cancel" button or select another air conditioner.

B: Control section

The settings for start/stop, operation mode, setting temperature, fan speed, and swing/fan direction can be changed.

C: Send button

For sending all the changes made so far to the Web Interface.

The settings of the air conditioner will not be changed until the data for the changes are sent using this button.

D: Cancel button

For cancelling all the changes made so far.

E: Check buttons for timer setting and remote controller prohibition setting

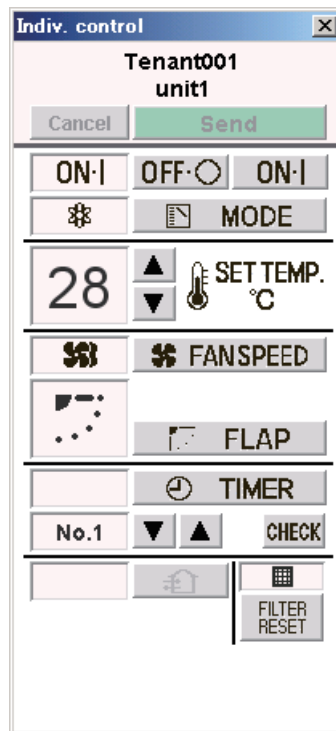
For displaying a check screen for the corresponding settings.

(See "Tenant holiday/Timer special day" and "Prohibiting remote control use".)

To return to the previous screen, click on the "Return" button.

*For a user who has logged in using the "General" user account, the buttons that have been set as prohibited will be disabled.




In addition, the "R/C" button and the "Check" button on its right will not be displayed.




Remote controller for a "General" user

⑨ Display order change buttons

For changing the display order of indoor units

After selecting an indoor unit whose order you wish to change, click on the “” or “” button. Each time the “” button is clicked on, the order of the indoor unit will move one place upward in the tree or leftward in the icon display section.

Each time the “” button is clicked on, the order of the indoor unit will move one place downward in the tree or rightward in the icon display section.

To register the changed setting, click on the “Send” button.

The changed order will be reflected on the “Each tenant details” and “All units” screens.

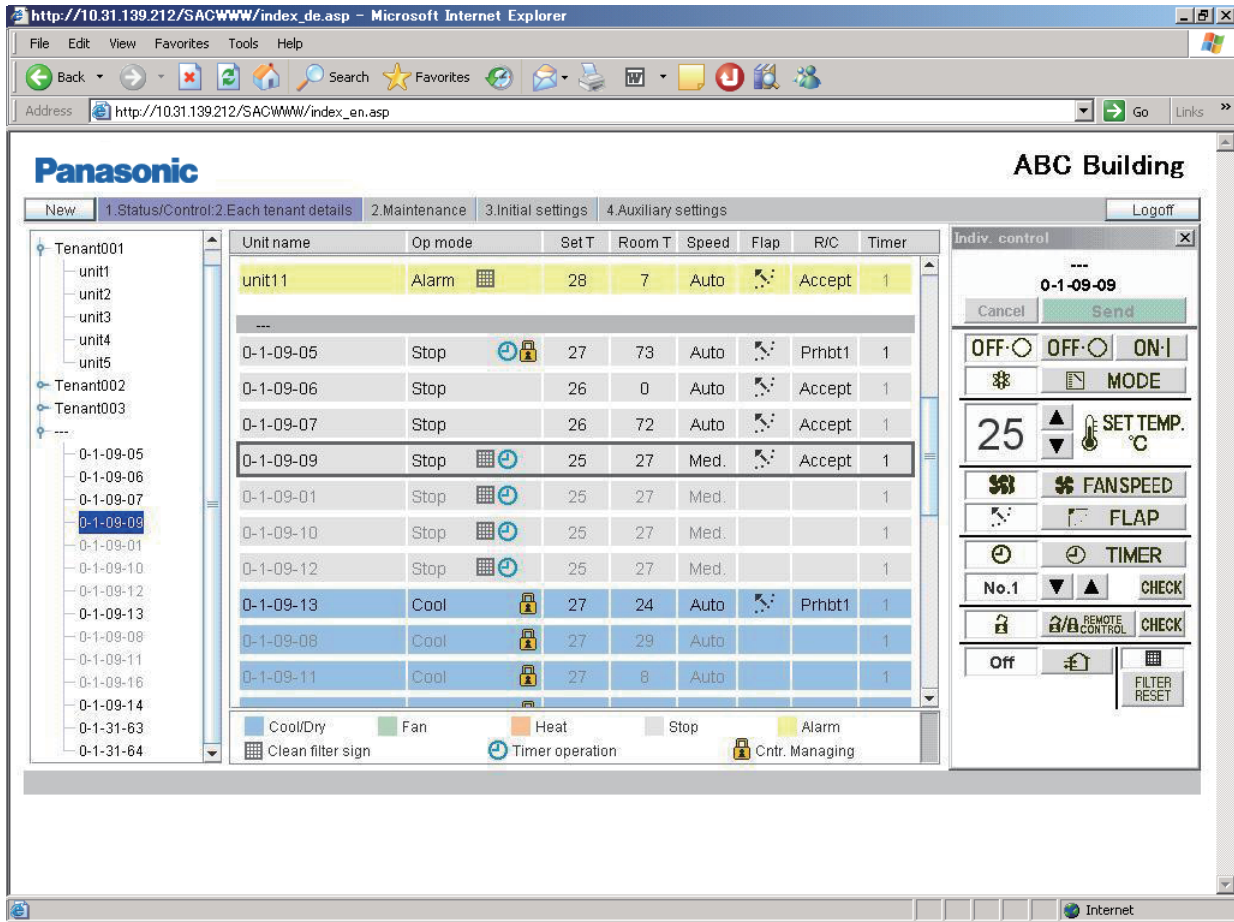
⑩ “Log off” button

For logging off the currently logged-in user. The login screen will be displayed.

6.2 Displaying detailed information by tenant

When “1. Status/Control: 2. Each tenant details” is selected from the menu, the screen shown below is displayed. (The details of the displayed screen vary, depending on the type of account used for login.)

When any of the indoor units is clicked on, the remote controller screen will be displayed. Operations on this screen are the same as those on the “Each tenant” screen. See the relevant heading.



Even in a case of group control, the main units, as well as sub unit, are displayed.

The indications for sub units are grayed, and the remote controller screen will not open if you click on a grayed indication. To open the remote control screen, select the main unit.

For sub units, the cells for the flap setting and remote controller prohibition setting are blank.

6.3 All Units

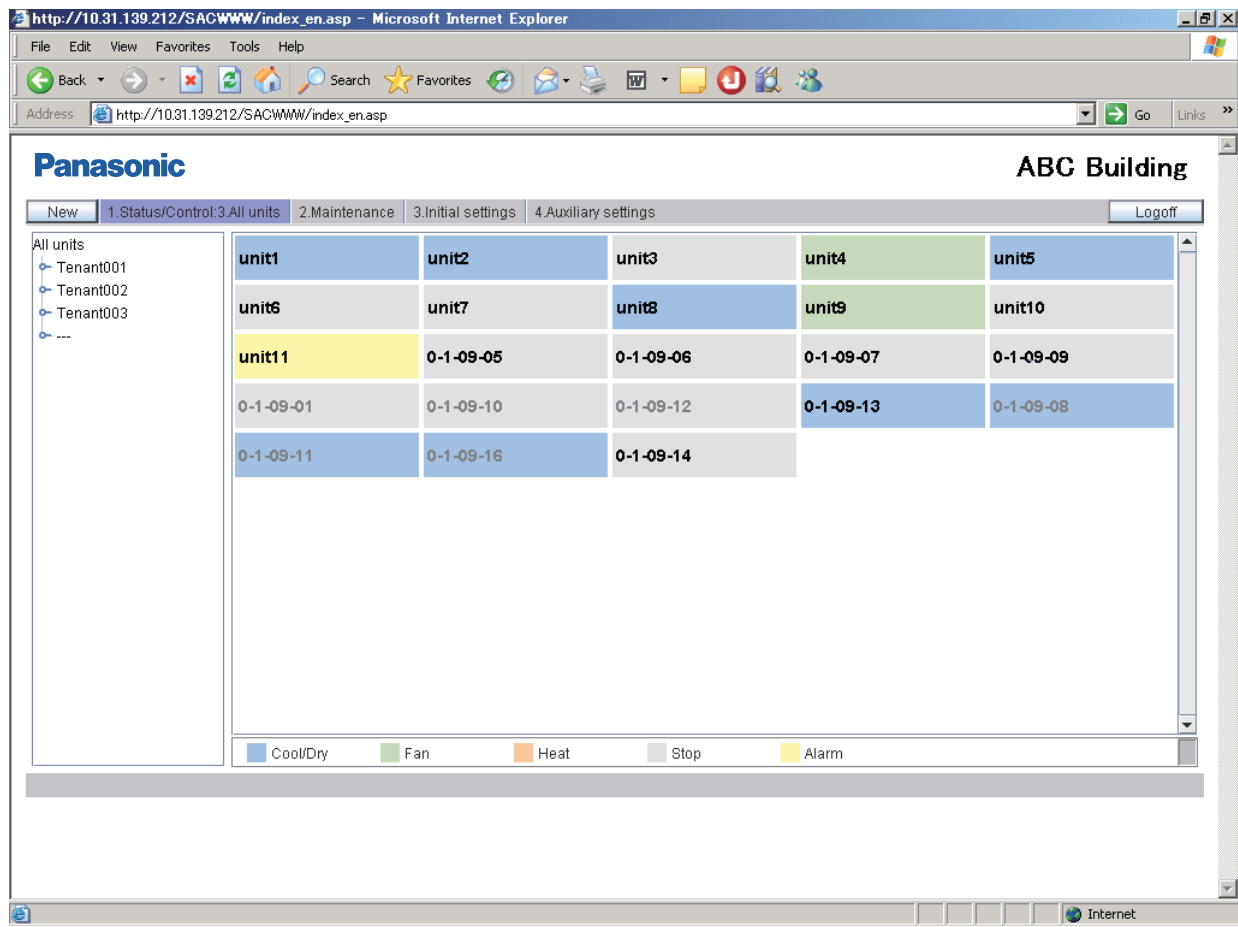
When “1. Status/Control: 3. All units” is selected from the menu, the screen shown below is displayed.

(The details of the displayed screen vary, depending on the type of account used for login.)

A maximum of 64 indoor units are displayed on a screen. In a case of group control, sub units, as well as main units, are displayed.

Operations on this screen are the same as those on the “Each tenant” screen. See the relevant heading.

When any of the indoor units is clicked on, the remote controller screen will be displayed.



As the number of indoor units increases, the display space for one unit will be reduced. As a result, part of a unit name may become hidden.

7.1 Alarm Log

If you log in using the administrator or special user account, when “2. Maintenance: 1. Alarm log” is selected from the menu, the screen shown below is displayed.

When an indoor unit is selected in the tree, the latest 14 alarm logs will be displayed.

If 15 or more alarms are issued, all but the latest 14 logs will be erased.

A log for restoration from an error will not be recorded.

The screenshot shows a web browser window displaying the Panasonic ABC Building maintenance interface. The browser address bar shows http://10.31.139.212/SACWWW/index_en.asp. The interface has a navigation menu with tabs: New, 1. Status/Control, 2. Maintenance:1. Alarm log (selected), 3. Initial settings, 4. Auxiliary settings, and a Logoff button. The main content area is titled "TenantNo.1: Tenant001" and "I/D unit : unit4 (0-1-01-04)". On the left, a tree view shows "Tenant" with sub-items: Tenant001 (expanded), unit1, unit2, unit3, unit4 (selected), unit5, Tenant002, Tenant003, and The main table displays alarm logs for unit4:

| Occurrence date | Alarm code | Occurrence date | Alarm code |
|------------------|-------------|-----------------|------------|
| 2009.05.11 03:32 | Filter sign | | |
| 2009.05.11 04:04 | P10 | | |
| 2009.05.11 04:06 | F03 | | |
| | | | |
| | | | |
| | | | |
| | | | |

The content of an alarm is indicated with an alarm code.

For details on the meanings of alarm codes, refer to the operation manual of the air conditioners or consult your service representative.

7.2 Sent Mail Log

If you log in using the administrator user account, when “2. Maintenance: 2. Sent mail log” is selected from the menu, the screen shown below is displayed.

The logs for pieces of e-mail that were delivered to the specified addresses when an alarm was issued from air conditioners or when the air conditioners were restored are displayed.

| No. | Rslt | Send T. | To | Unit name | Alarm code | Stat | Address |
|-----|------|------------------|----------------|-----------|------------|-------------|-------------|
| 1 | OK | 2009.07.25 12:13 | user1@user.com | unit5 | P09 | Occurrence | 0-1-01-05 |
| 2 | OK | 2009.06.10 11:55 | user1@user.com | 0-1-01-08 | F03 | Restoration | 0-1-01-08 |
| 3 | OK | 2009.06.10 09:09 | user1@user.com | 0-1-01-08 | F03 | Occurrence | 0-1-01-08 |
| 4 | OK | 2009.06.02 21:47 | user1@user.com | unit1 | P10 | Restoration | 0-1-01-01 |
| 5 | OK | 2009.06.02 21:36 | user1@user.com | unit1 | P10 | Occurrence | 0-1-01-01 |
| 6 | OK | 2009.06.02 21:32 | user1@user.com | | A00 | Occurrence | [TEST_MAIL] |
| | | | | | | | |
| | | | | | | | |
| | | | | | | | |
| | | | | | | | |
| | | | | | | | |
| | | | | | | | |
| | | | | | | | |
| | | | | | | | |
| | | | | | | | |
| | | | | | | | |
| | | | | | | | |
| | | | | | | | |
| | | | | | | | |
| | | | | | | | |
| | | | | | | | |
| | | | | | | | |
| | | | | | | | |
| | | | | | | | |

① No.

The entry numbers for the sent mail log. With a maximum of 20 (No. 1 to 20) possible entries, the newest entries appear at the top of the list. When the number of entries exceeds 20, entries are deleted starting with the oldest.

As up to three mail recipients can be specified, up to three log entries can be recorded for one alarm occurrence.

When normal status is restored for the alarm, up to 3 e-mail delivery logs are recorded, in the same way.

② Rslt

“OK” appears when a piece of alarm mail is sent properly, and “N/A” appears when sending fails.

③ Send T.

The date and time a piece of alarm mail was sent (or sending was attempted).

④ To

The recipient address a piece of alarm mail was sent to. If the address is too long, only part of the address may appear.

⑤ Unit name

The name of the indoor unit for which the alarm occurred.

⑥ Alarm code

The code for the alarm that occurred.

⑦ Stat

“Occurrence” appears when a notification of an alarm occurrence is sent, and

“Restoration” appears when a notification of an alarm restoration is sent.

⑧ Address

The address of the indoor unit for which the alarm occurred.

The display format is “0-1- Outdoor unit system address - Indoor unit address”.

When a piece of test mail is sent, “TEST_MAIL” appears.

*For details on the setting of a destination address for alarm e-mail, see “WEB settings”

(Main **3** Sub **3**).

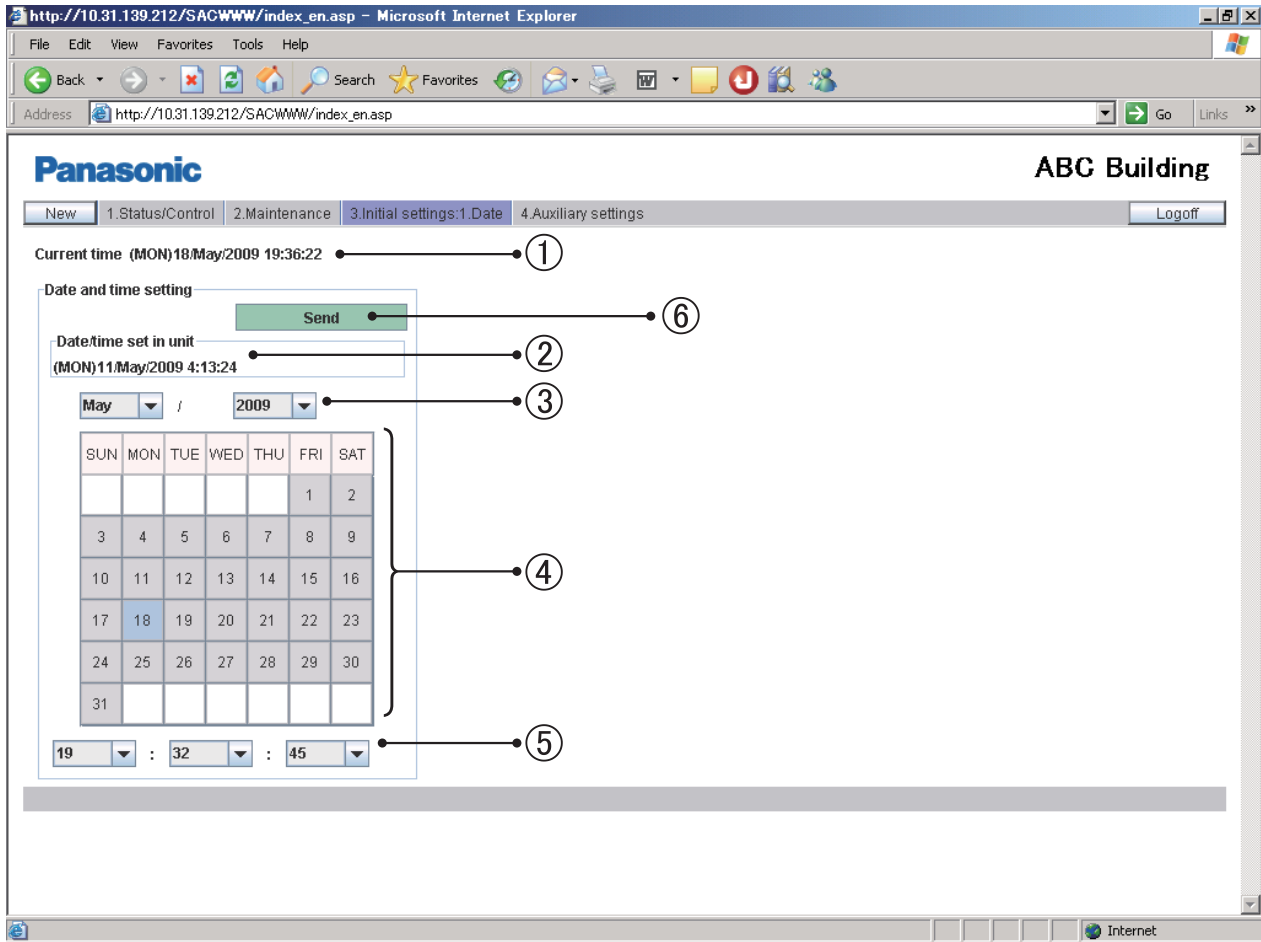
8 Initial Settings

8.1 Date and Time Setting

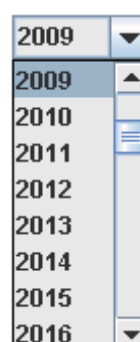
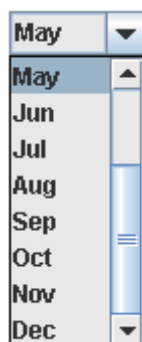
If you log in using the administrator user account, when “3. Initial settings: 1. Date” is selected from the menu, the screen shown below is displayed.

Setting of the current date and time can be made.

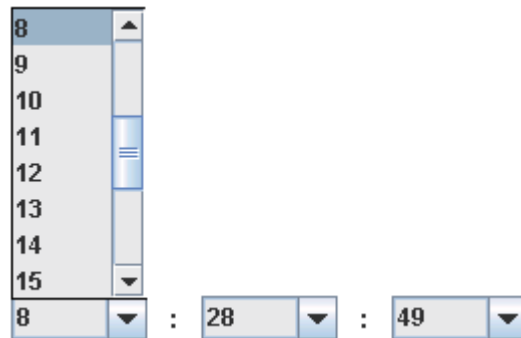
Be sure to set the date and time before starting any operation, as this setting is required for program timer settings.



- ① The current date and time settings of the PC are displayed. (This indication is periodically updated.)
- ② The current date and time settings of the Web Interface main unit are displayed. (Only when this screen is displayed or updated is this indication updated.)
- ③ To set the date, click on “▼” to open the pulldown menu shown below. Select the year (2000–2070) and month.



- ④ Directly click on the day to be set. The selected day will be highlighted in light blue.
- ⑤ To set the time, click on “▼” to open the pulldown menu shown below.
Select the hour, minute, and second.



- ⑥ When you click on “Send”; the following message will be displayed. Click on “YES” with the time signal. The date and time settings of the Web Interface are updated.
The date and time of the PC will not be updated.

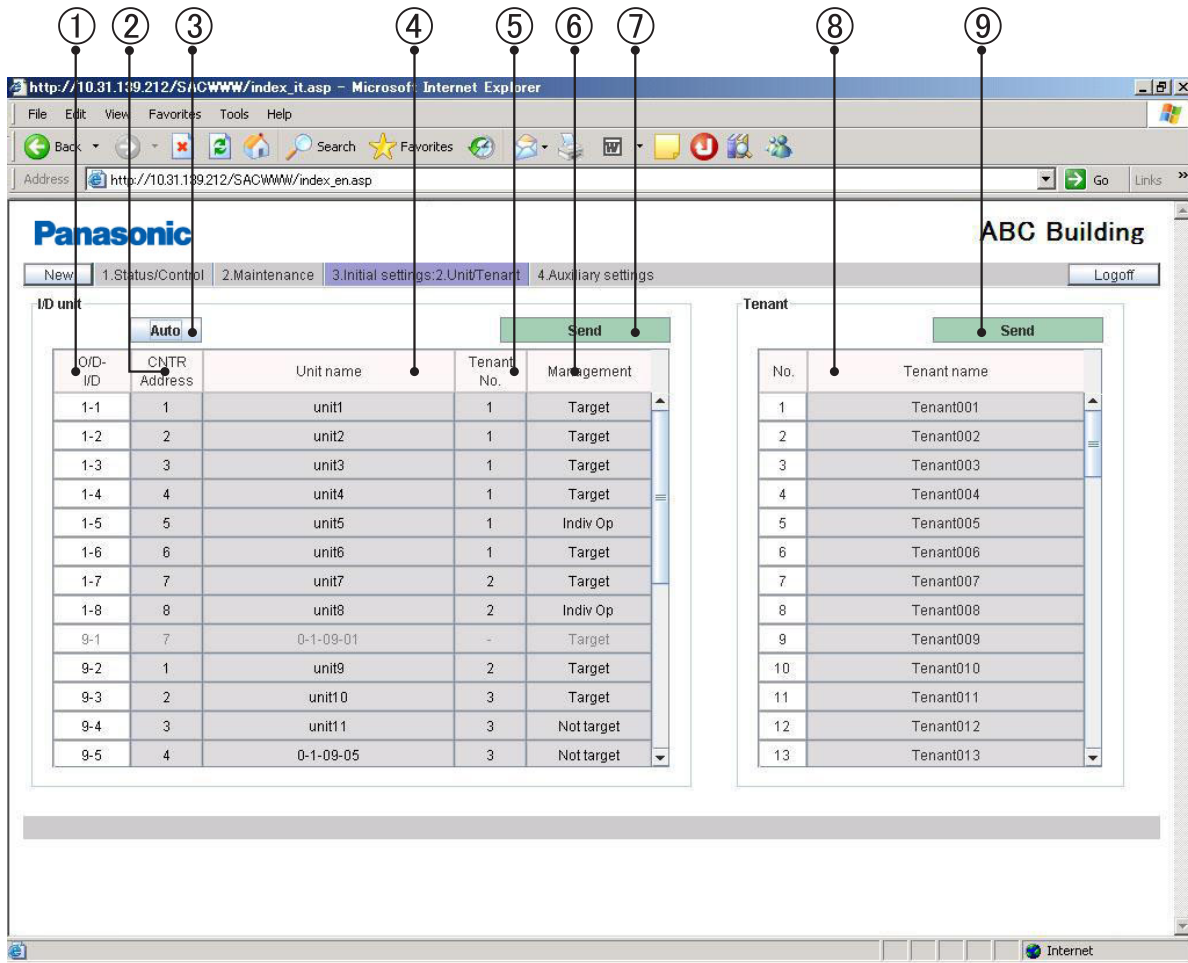


Note: In Steps ③, ④, and ⑤, the settings of the PC will be reflected when this screen is displayed or updated.

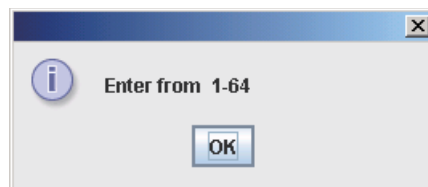
8.2 Unit/Tenant

If you log in using the administrator user account, when “3. Initial settings: 2. Unit/Tenant” is selected from the menu, the screen shown below is displayed.

Setting of the central control addresses, unit names, and tenants can be made.



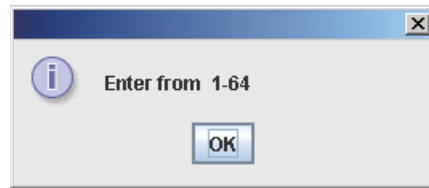
- ① The address for each indoor unit is displayed. The display format is “Outdoor system address – Indoor address”.
- ② The current central control address for each indoor unit is displayed. To set or change a central control address, click on the cell you wish to set/change then enter a value in the range of 1–64. In a case of group control, a sub unit cannot be selected. The central control address of the main unit will be applied to the sub units. If a value outside the range of 1–64 is entered, the message shown below is displayed.



- ③ If you click on “Auto”, the central control addresses will be automatically allocated from 1 to the indoor units in ascending order of the indoor unit address.

The same central control address must not be assigned to two or more indoor units belonging to the same link system. Any such invalid input will be cancelled. If another piece of central control equipment (system controller, etc.) is connected, it is recommended to set the central control addresses on such equipment.

- ④ The name of each indoor unit is displayed.
To set or change the name of a unit, click on the cell you wish to set/change then enter a name, using up to 12 characters.
An “=” (equal sign) or “,” (comma) cannot be used.
- ⑤ The tenant No. for each indoor unit is displayed.
A “Tenant” represents a group of several indoor units used on the “Each tenant” screen and other screens.
To set or change a tenant No., click on the cell you wish to set/change then enter a value in the range of 1–64.
In a case of group control, a sub unit cannot be selected. The same tenant No. as that for the main unit is allocated to the sub units.
If a value outside the range of 1–64 is entered, the message shown below is displayed.



- ⑥ The type of management for each indoor unit can be set.
To select the management type, click on “▼” to open the pulldown menu, as shown below.
Select the type.
 - Target : The corresponding indoor unit is a target for management. The factory default is “Target” for all the indoor units.
 - Indiv Op : The indoor units that are set to “Indiv Op” will be excluded from the operations for all units. When the operations (start/stop, temperature setting, etc.) for all units or all tenants are performed by the Web browser, those commands will not be sent to the units set to “Indiv Op”.
 - Not target : The indoor units that are set to “Not target” will be excluded from targets of all operations, monitoring, and display. Such units will not be displayed on any screen other than this one.

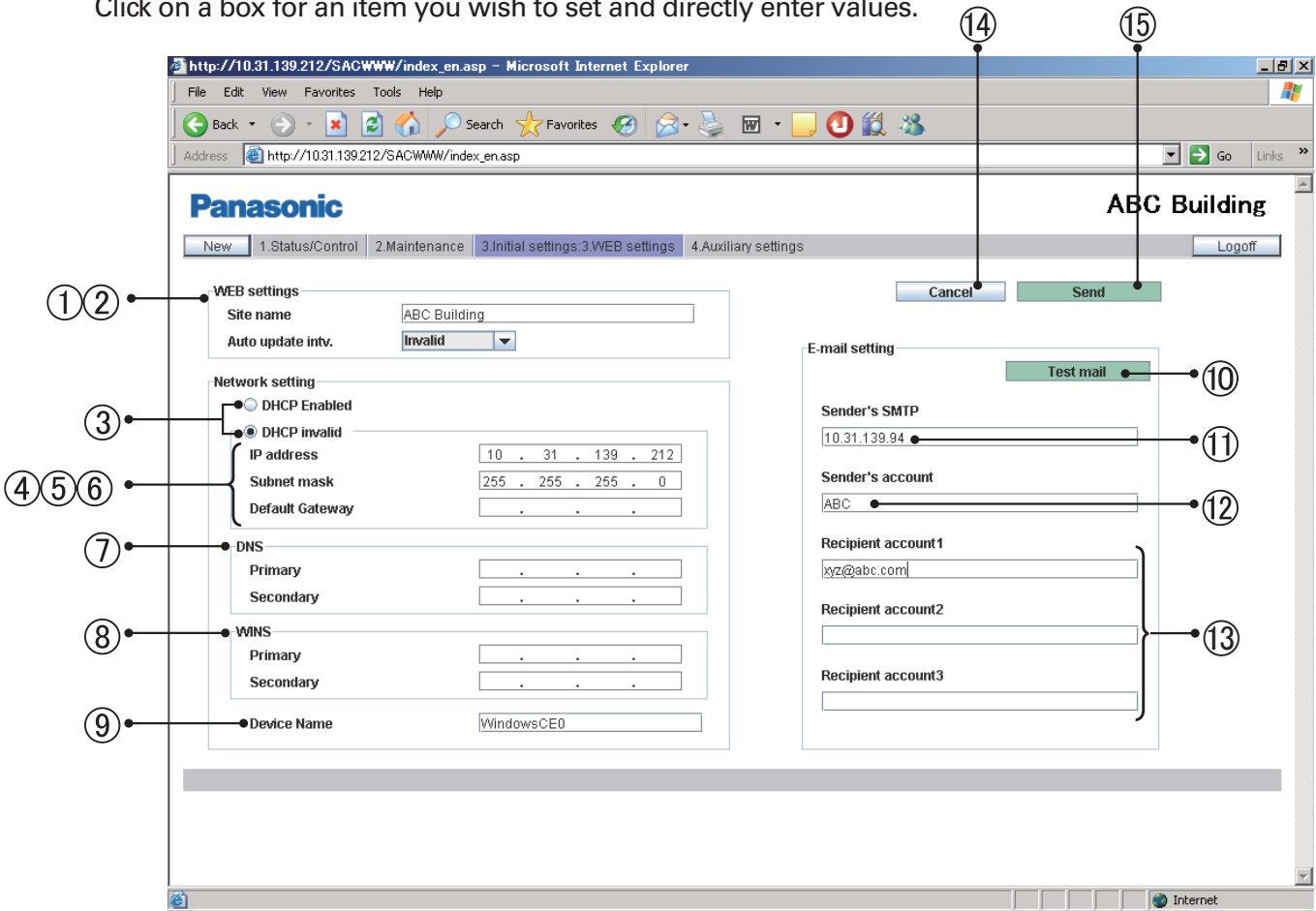


- ⑦ Clicking on this button will enable the settings of ②, ④, ⑤, and ⑥ above and send the data to the Web Interface. The changed data will only be enabled after being sent. The data for tenant name settings shown below will not be sent.
- ⑧ The tenant name for each tenant number is displayed. A maximum of 64 tenant names can be set. To set or change the name of a unit, click on the cell you wish to set/change then enter a name, using up to 20 characters.
An “=” (equal sign) cannot be used.
- ⑨ Clicking on this button will enable the settings of the above tenant names and send the data to the Web Interface. The changed data will only be enabled after being sent. The data of the settings of the above ②, ④, ⑤, and ⑥ will not be sent.

8.3 WEB Settings

If you log in using the administrator user account, when “3. Initial settings: 3. WEB settings” is selected from the menu, the screen shown below is displayed.

The Web-related settings, such as site name, e-mail settings, and network settings, can be made. Click on a box for an item you wish to set and directly enter values.



[WEB settings]

- ① Enter a site name (within 40 characters). An “=” (equal sign) cannot be used.
- ② An automatic updating interval of a screen that will be displayed on the Web browser can be set. You can select from among Invalid, 10 seconds, 20 seconds, 30 seconds, 1 minute, 2 minutes, 10 minutes, 30 minutes, and 1 hour.

If “Invalid” is selected, the data on a screen will not be updated until you click on the “New” button.

* The following screens will be automatically updated:

- Each tenant (Main ¹ Sub ¹)
- Each tenant details (Main ¹ Sub ²)
- All units (Main ¹ Sub ³)

[Network setting]

- ③ When a DHCP instead of a static IP is used, select the “DHCP Enabled” radio button. If “DHCP Enabled” is selected, items ④–⑥ will be disabled. The factory default is “DHCP invalid”.
- ④ Enter the IP address for the Web Interface. Refer to the settings of other devices, such as the PC and router. The factory default is “192.168.1.1”.
- ⑤ Enter the subnet mask for the Web Interface. Refer to the settings of other devices, such as the PC and router.
- ⑥ Enter the IP address of the default gateway that is connected with the Web Interface, as required.

- ⑦ Enter the IP addresses for the primary and secondary DNS servers, as required.
- ⑧ Enter the IP addresses for the primary and secondary WINS servers, as required.
- ⑨ Enter a device name (ID name) of the Web Interface.
(This device name is used for identifying the Web Interface when a DNS server is used.)
Up to 15 characters, "-" (hyphen), and "_" (underscore) can be used.
Only an alphabetic (A–Z, a–z) can be used for the first character.
Neither a "-" (hyphen) nor an "_" (underscore) can be used for the last character.

[E-mail setting] The settings for automatic delivery of e-mail notifying of an occurrence of or restoration from an error of an air conditioner:

- ⑩ For sending test mail
- ⑪ Enter the IP address (or domain name) of the mail (SMTP) server that is separately contracted.
One-byte alphanumeric, "@" (at sign), "." (bullet), "_" (underscore), and ":" (colon) can be used.
- ⑫ Enter a sender's account name (within 40 characters).
An "=" (equal sign) cannot be used.
- ⑬ Enter a recipient account name (mail address) (within 40 characters).
A maximum of 3 accounts can be set.
- ⑭ For disabling input/changed data and returning to the original settings
- ⑮ Clicking on this button will enable the input settings and send them to the Web Interface.
The input data will only be enabled after being sent.
When the following message is displayed, click on "YES":



If any of the settings ③–⑨ is changed, the Web Interface will be restarted after the message shown below is displayed. Wait for at least 5 minutes before logging in again.

Network settings have been changed. The unit will restart.
Please log in again after about 5 minutes.

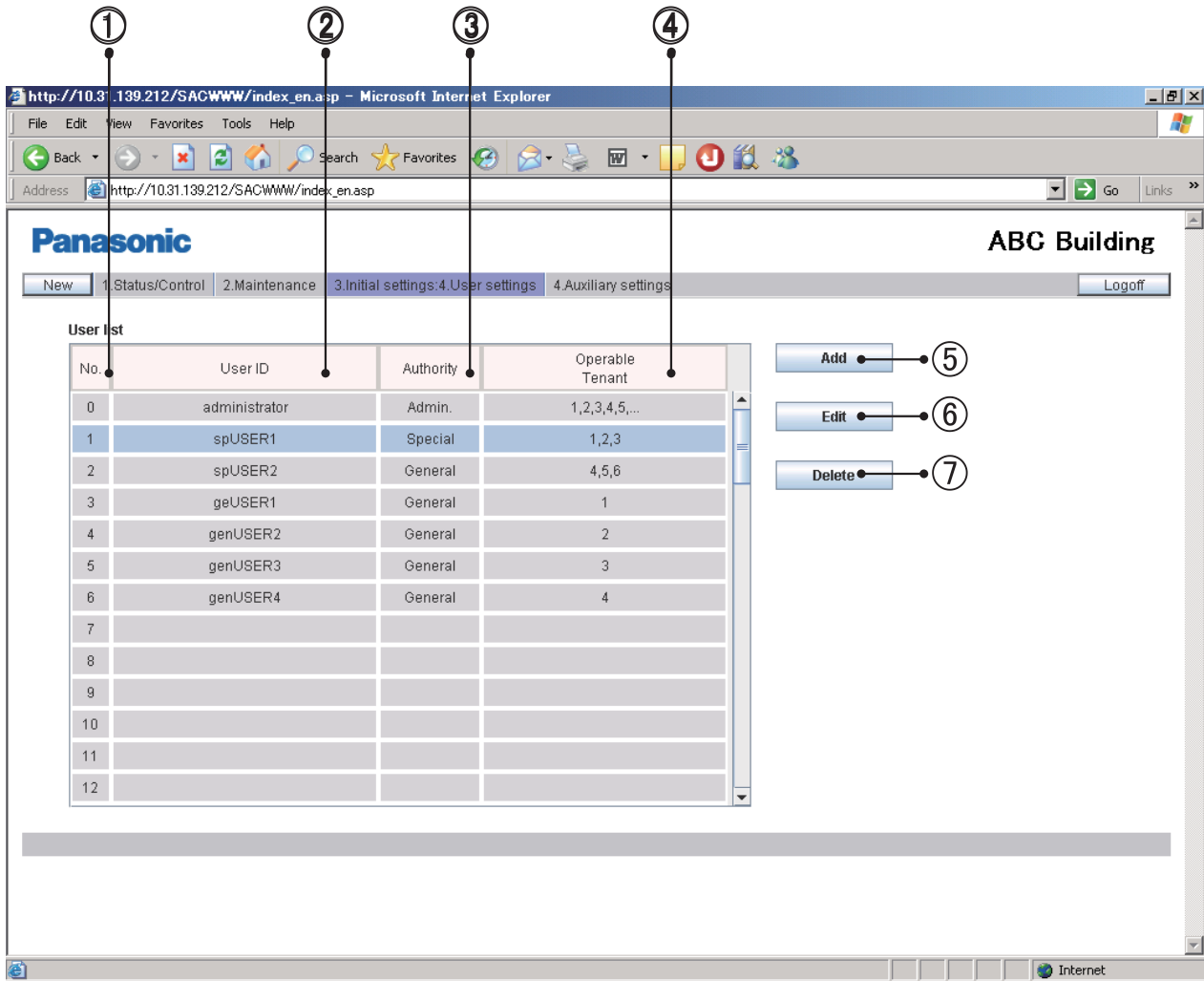
- * For details on the settings on this screen, consult the network administrator for the environment where the Web Interface has been installed.
- * The range of values that can be set for the IP addresses, subnet mask, default gateway, and the DNS and WINS blocks is 0–255.
- * For the IP addresses, neither "0.0.0.0" nor "255.255.255.255" can be set.
- * If an invalid value is entered, the following error message will be displayed:



8.4 User Settings

If you log in using the administrator user account, when “3. Initial settings: 4. User settings” is selected from the menu, the screen shown below is displayed.

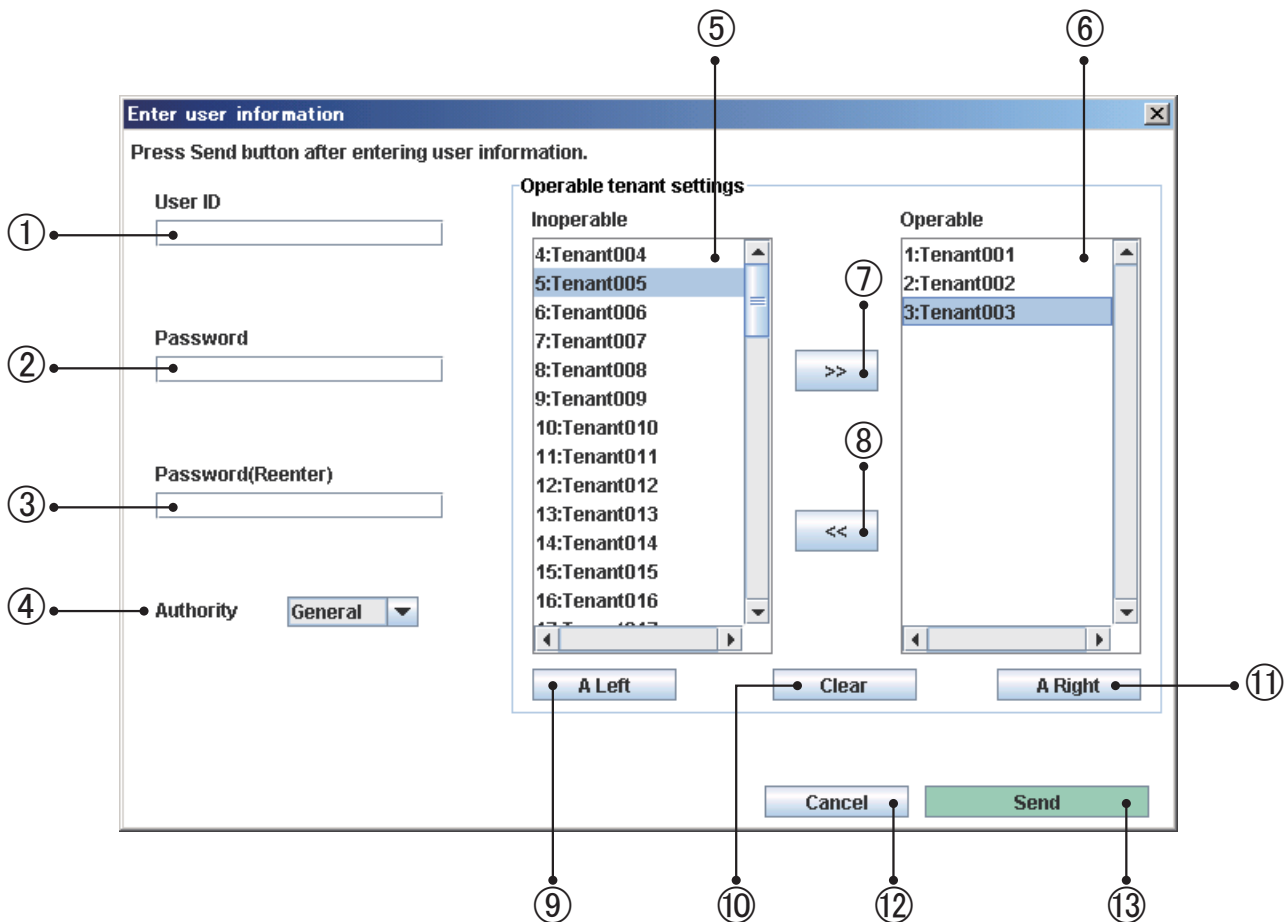
Setting of the user ID, password, and authority types that are required for logging in the Web Interface can be made.



- ① User No. A maximum of 64 (No. 1–64) users can be set.
At the factory, the Administrator user shown below is registered at the top (No. 0).
After logging in using this administrator user account, change the password.
User ID : administrator
Password : admin
- ② User ID
- ③ The user authority types include “Admin.”, “Special” and “General”. Only one “Admin.” can be set, and the administrator user is displayed at the top (No. 0).
- ④ The tenant numbers of whom monitoring and operations are allowed for that user are displayed. Although a maximum of 64 tenants can be set, only 5 are displayed in the cell at a time. If there are 6 or more tenants, “...” will be affixed.
- ⑤ For adding a new user. If users have been already set for all of No. 1–64, this button is disabled.
- ⑥ For editing the already set user data
- ⑦ For deleting a user setting. The administrator user at the top cannot be deleted.

(1) Adding a New User

If you click on the "Add" button, the following screen will be displayed:



If a user is added, that user will be registered as the lowest user number to which no user is currently registered.

No user number to be used for registration can be skipped.

- ① Enter a user ID (within 20 characters).
- ② Enter a password (within 10 characters).
- ③ For reconfirmation, enter the same password as that in Step ②. (In Steps ② and ③, input characters will not be displayed on the screen.)
- ④ Select the type of user authority, "Special" or "General".
- ⑤ A list of the tenants of whom monitoring and operations are not allowed for that user is displayed.
- ⑥ A list of the tenants of whom monitoring and operations are allowed for that user is displayed.

After selecting a tenant or several tenants on the list at the left or right, perform the operations described below.

Several tenants can be simultaneously selected in the following ways:

- While holding the Ctrl key pressed, click on the tenants you wish to select one by one.
- After selecting one tenant, click on another tenant while holding the Shift key pressed. All the tenants displayed between the selected tenants will be selected.

- ⑦ The tenant(s) selected on the left list will be moved to the right list and registered as operable target(s).
- ⑧ The tenant(s) selected on the right list will be moved to the left list and registered as inoperable target(s).

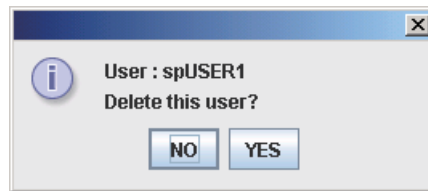
- ⑨ For selecting all the tenants on the left list
- ⑩ For cancelling the current selection of tenant(s) on both the left and right lists
- ⑪ For selecting all the tenants on the right list
- ⑫ For cancelling all the settings made and closing the screen
- ⑬ For enabling and sending the set data to the Web Interface for registering the operable tenants

(2) Editing the data of existing users

- If you click on the “Edit” button, the same screen as that shown in the previous heading will be displayed.
- The current settings displayed on the screen can be edited in the same manner as when adding a user.
- The changed settings will be enabled only after they are sent by clicking on the “Send” button.
- For the administrator user located at the top (No. 0), only the user ID and password can be changed.
The authority type is fixed at “Admin.” and cannot be changed.
The operable tenants are fixed at “All tenants” and cannot be changed.

(3) Deleting the data of existing users

After selecting a user, click on the “Delete” button. The following message will be displayed.



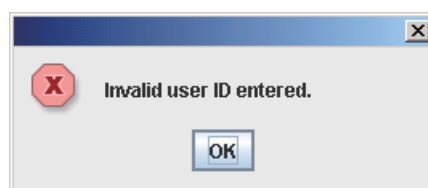
If you click on “YES”, that user will be deleted.
When a user is deleted, the subsequent users will be shifted upward, and their user numbers will be decreased by one.
If the same user is registered again, the user number for that user will be the final user number.
The administrator user at the top (No. 0) cannot be deleted.

(4) Error messages

If any entered data are wrong, one of the following error messages may be displayed when you click on the “Send” button.
Correct the corresponding data and send the data again.

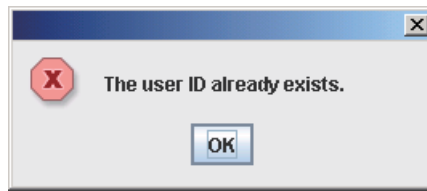
[Invalid user ID entered.]

A wrong or no user ID (no input) was entered and sent.



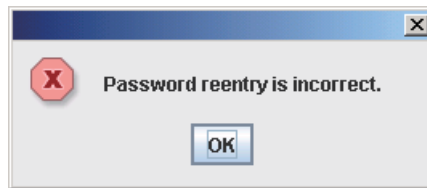
[The user ID already exists.]

The input user ID has already been registered.



[Password reentry is incorrect.]

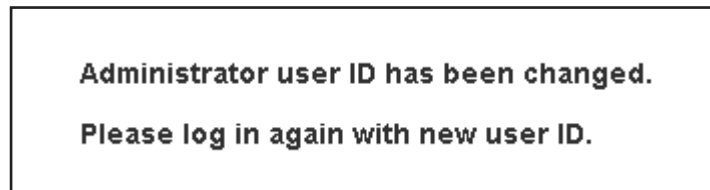
The password reentered in Step ③ is not the same as that entered in Step ②.



[Administrator user ID has been changed.]

If the administrator user ID is changed, the message shown below will be displayed.

Log in again with the new user ID.



(5) Comparison of authority for each user

○: Denotes that corresponding operations and displays are available.

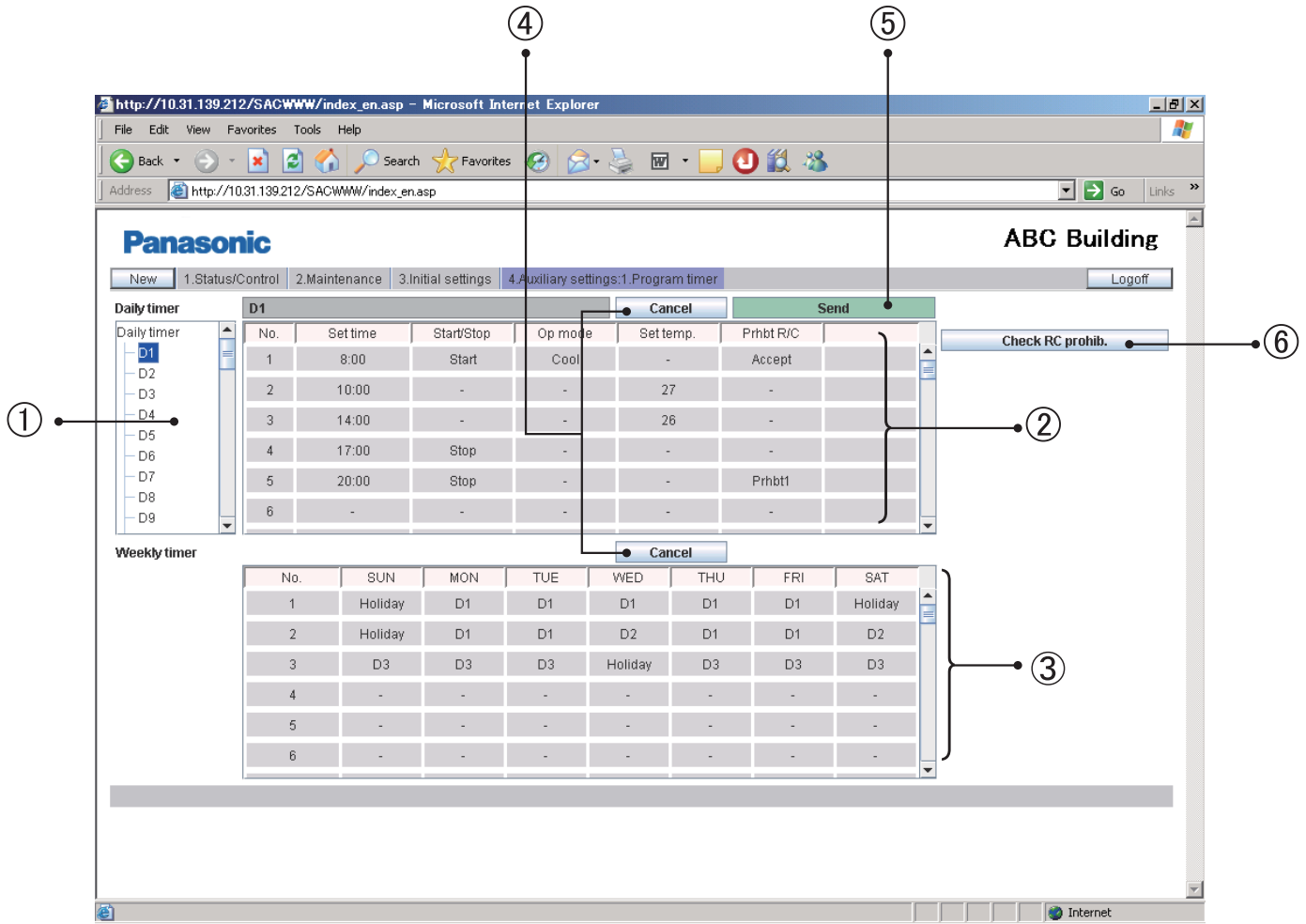
× : Denotes that neither the corresponding function nor its screen display is available.

All other functions and displays that are not shown in the table below are available for all users.

| Functions and displays | Users | | |
|---|-------------|------------------|------------------|
| | Admin. user | Special user | General user |
| Operable tenants | All | Only set tenants | Only set tenants |
| Prohibit R/C selection 1-4 (Remote controller screen) | ○ | ○ | × |
| Alarm logs | ○ | ○ | × |
| Sent mail log | ○ | × | × |
| Date and time setting | ○ | × | × |
| Unit and tenant setting | ○ | × | × |
| Tenant name setting | ○ | × | × |
| WEB settings | ○ | × | × |
| User settings | ○ | × | × |
| Program timers setting | ○ | Checking only | Checking only |
| Tenant holiday and timer special days setting | ○ | × | × |
| Remote controller prohibition setting | ○ | Checking only | × |
| Other settings | ○ | × | × |

9.1 Program Timer

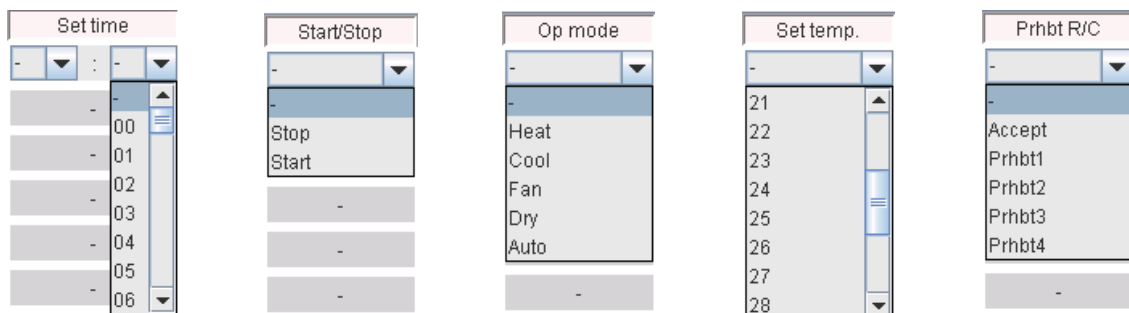
If you log in using the administrator user account, when "4. Auxiliary settings: 1. Program timer" is selected from the menu, the screen shown below is displayed. Settings for the daily timers and weekly timers can be made. (For a special or general user, only checking of the timer settings is possible.)



① When a daily timer No. is selected in the tree, the current setting for that timer is displayed. A maximum of 50 daily timers, one timer for a "Holiday", and five timers for "Sp day" (special days) are provided.

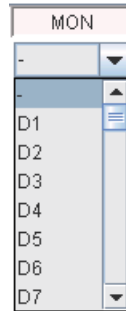
The "Holiday" timer is a daily timer reserved for a holiday for the tenant.
 An "Sp day" timer is a daily timer reserved for a special day for the tenant.
 For details on how to use them, see "Tenant holiday/Timer special day".

② To set operation time and operations for a daily timer, click on a setting item you wish to set to open the pulldown menu, as shown below. Select operation time or operation.

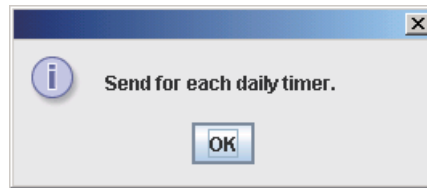


Up to 50 actions per day can be set for a daily timer.
 Several actions can be set for one operation time.

- ③ For a weekly timer, select a daily timer from the pulldown menu in the same way as with a daily timer.
 Select a desired daily timer number (D1–D50, holiday, or special day 1–5) for each day of the week.
 A maximum of 50 weekly timers can be set.




- ④ For disabling input/changed data and returning to the original settings.
- ⑤ Clicking on this button will enable the input settings and send them to the Web Interface.
 The input data will only be enabled after being sent.
 Setting data for each daily timer No. (D1, D2, . . .) must be sent each time the setting for the daily timer is completed. If you attempt to move to D2 setting while you are setting D1, for example, the error message “Send for each daily timer.” will be displayed, as shown below.



If this message is displayed, click on the “Send” button to enable the setting, or click on the “Cancel” button to disable the setting then perform the setting for another daily timer No.

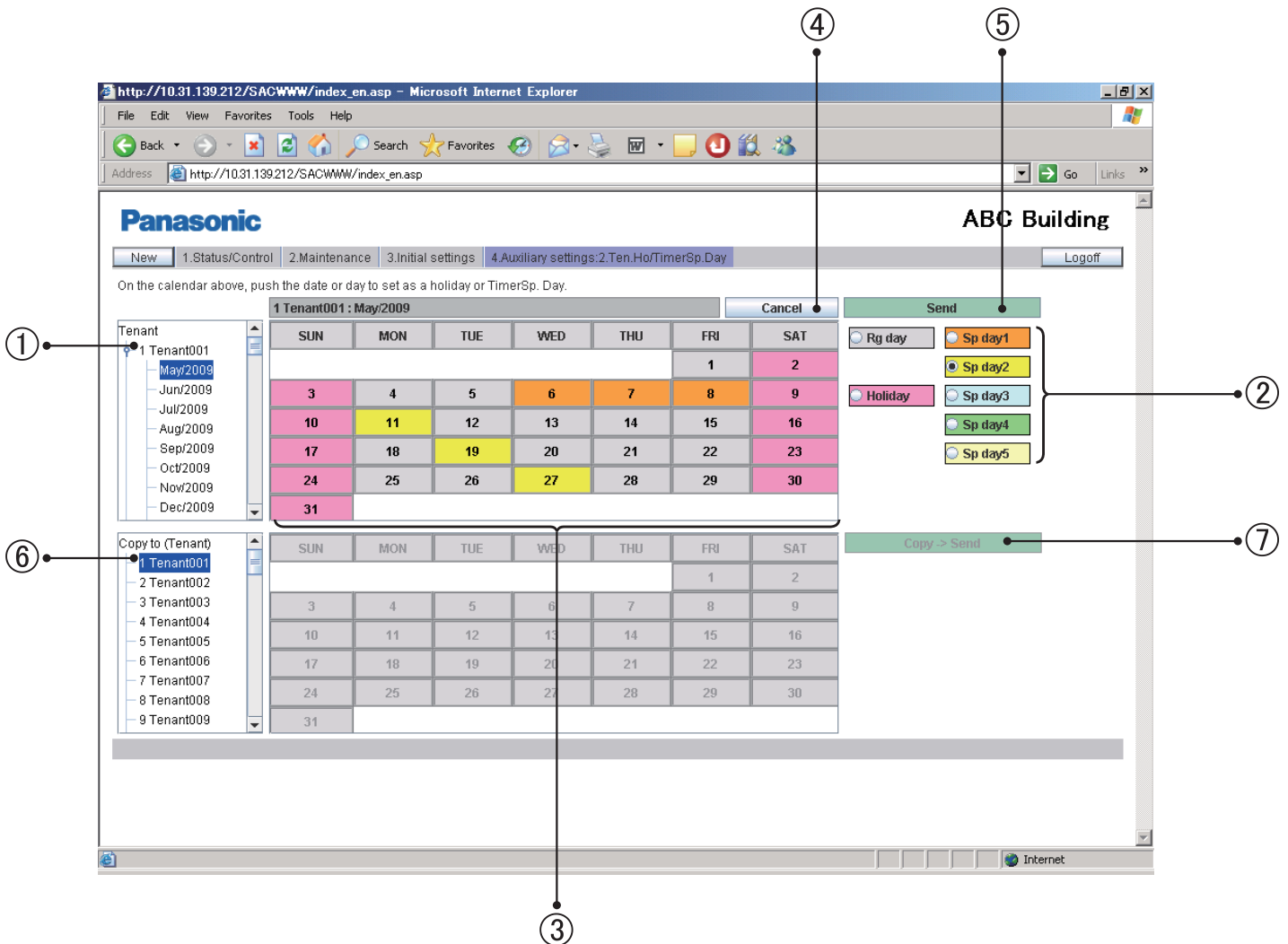
- ⑥ The items for which operations with the remote controller are prohibited can be confirmed.
 When you click on this button, the screen shown below will be displayed.
 You can only confirm the prohibited items. You cannot change the setting. To change settings, see “Prohibiting remote control use”

| Check RC prohib. | | | | | | |
|------------------|------------|------------|-----------|-----------|----------|--|
| | Start/Stop | Oper. mode | Set temp. | Fan speed | Set flap | |
| Prohibition1 | X | O | O | O | O | |
| Prohibition2 | X | X | X | O | O | |
| Prohibition3 | O | X | X | O | O | |
| Prohibition4 | O | X | O | O | O | |

 The setting temperature will be automatically set within the range of each air conditioner's upper and lower limit values during actual operation, as the upper and lower temperature limits vary depending on the indoor unit models. Setting for an item for which “Set time” is not set will be invalid.

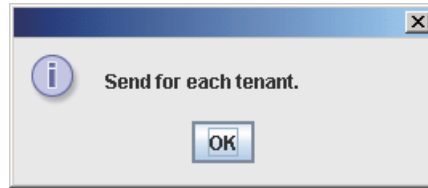
9.2 Tenant holiday/Timer special day

If you log in using the administrator user account, when "4. Auxiliary settings: 2.Ten.Ho/TimerSp.Day" is selected from the menu, the screen shown below is displayed. The timer settings for the tenant holiday and special days can be made.



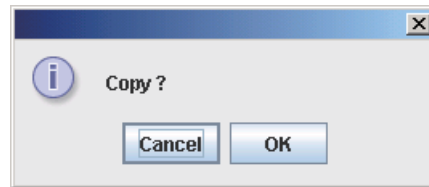
- ① When a month for your desired tenant No. is selected in the tree, the current timer settings are displayed.
Settings for the next 2 years are possible.
- ② Select the type of days to be set (regular days, holiday, special days 1–5).
- ③ Click on a day or a day of the week. That day or day of the week will be set as a holiday or timer special day that has been selected in Step ②. Programmed timer operation set on the "Ten.Ho/TimerSp.Day" screen will be executed on that day or day of the week.
If you click on an individual day, the selected timer is set for that day; if you click on a day of the week, the selected timer is set for that day of the week.
To cancel a holiday or timer special day setting, select "Rg day" in Step ② and select the day or day of the week.
- ④ For disabling input/changed data and returning to the original settings.
- ⑤ Clicking on this button will enable the input settings and send them to the Web Interface.
The input data will only be enabled after being sent.

The tenant holiday and timer special days settings must be performed for individual tenants. If you attempt to move to Tenant 002 setting while you are setting Tenant 001, for example, the error message "Send for each tenant." will be displayed, as shown below.



If this message is displayed, click on the "Send" button to enable the setting, or click on the "Cancel" button to disable the setting then perform the setting for another tenant.

- ⑥ Select a tenant to whom you wish to copy data of holiday/timer special days setting.
- ⑦ If you click on "Copy -> Send", the following message will be displayed:



If you click on "OK", the setting data for the next 2 years will be copied from the upper (source) tenant to the lower (destination) tenant.

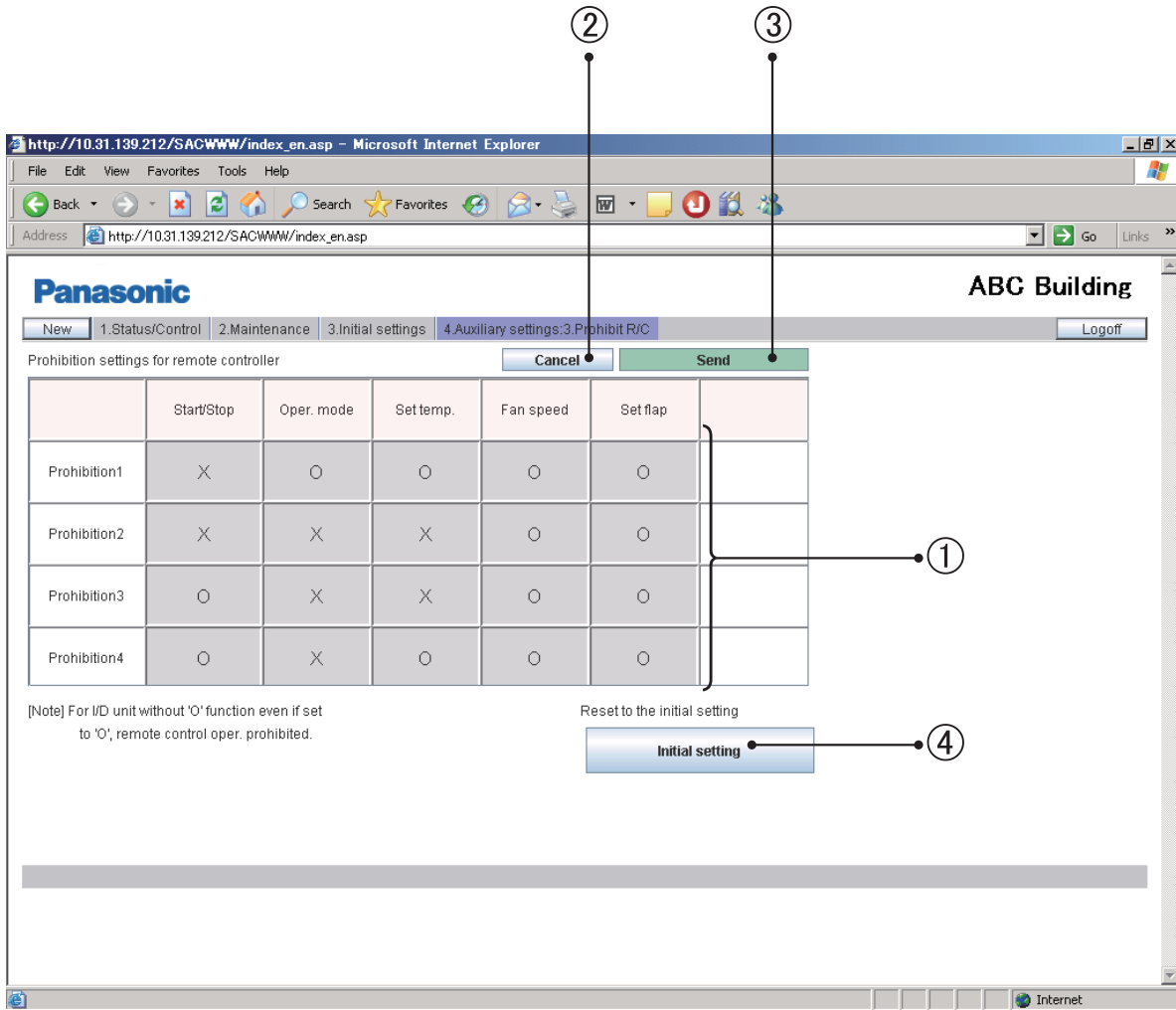
If the setting for the upper (source) tenant is not valid, the "Copy -> Send" button is not available.

First click on the "Send" button to make the setting valid then click on the "Copy -> Send" button.

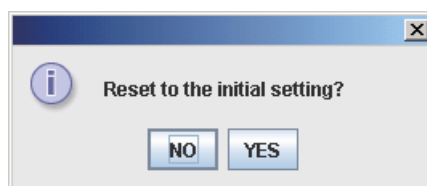
9.3 Prohibiting remote control use

If you log in using the administrator user account, when "4. Auxiliary settings: 3.Prohibit R/C" is selected from the menu, the screen shown below is displayed.

Setting of the items for which operations with the remote controller for an air conditioner are prohibited can be made. (For a special user, only checking of the settings is possible.)

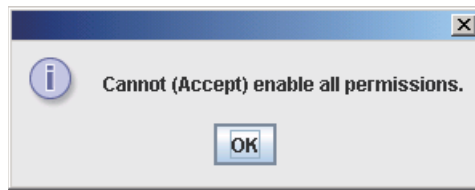


- ① Each time you click on a setting item, "○" and "x" will appear alternately.
- ② For disabling input/changed data and returning to the original settings.
- ③ Clicking on this button will enable the input settings and send them to the Web Interface. The input data will only be enabled after being sent.
- ④ To return the setting to the initial setting, click on "Initial setting". When the following message is displayed, click on "YES". The factory default setting (the setting as shown in the above figure) will be restored, and the data are also sent to the Web Interface.



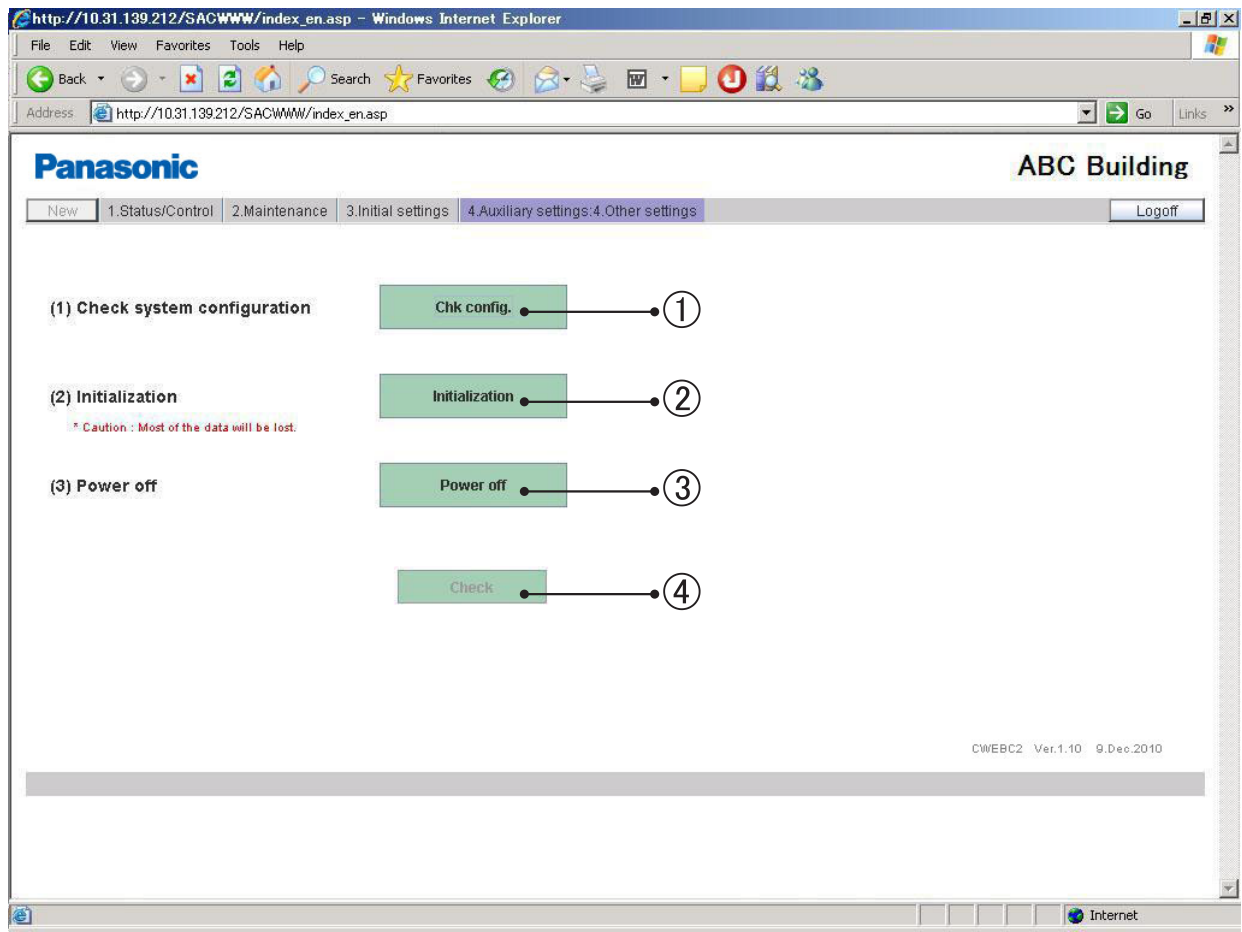
Setting all the setting items to (allowed) is not possible, because this has the same meaning that remote controller operations are permitted.

The following error message will be displayed.



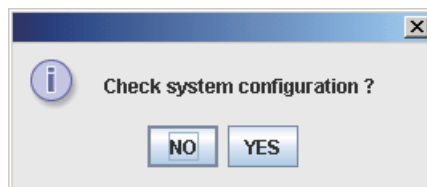
9.4 Other settings

If you log in using the administrator user account, when “4. Auxiliary settings: 4.Other settings” is selected from the menu, the screen shown below is displayed.

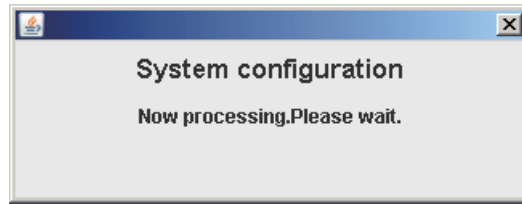


(1) Configuration check

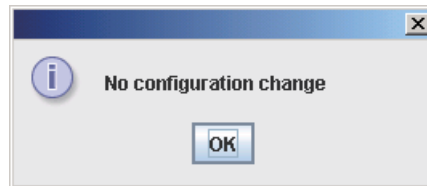
- ① If you click on “Chk config.”, a system configuration check can be performed. Perform a configuration check after addition/deletion of units or address change is performed on the air conditioner side. When the following message is displayed, click on “YES” to perform a system configuration check.



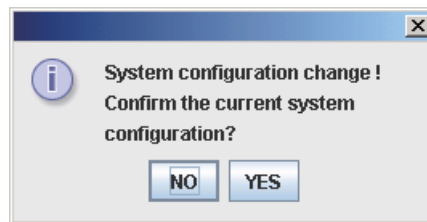
The following message will be displayed while checking the system configuration. While this message is displayed, no Web operation is possible. Wait until the check is completed.



If the checking result shows that the system configuration has not been changed, the following message will be displayed.



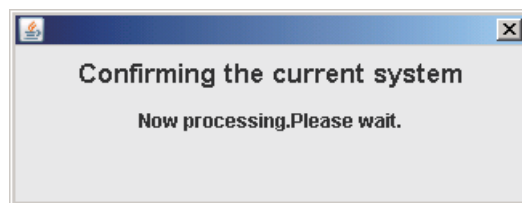
If the checking result shows that the system configuration has been changed, the following message will be displayed.



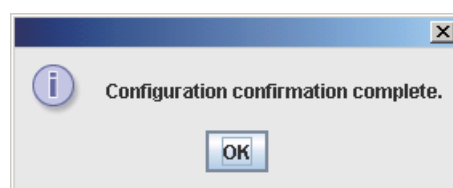
Note that if you leave the screen in this state for 1 hour or more, the current system configuration confirmation process will be automatically performed and registered.

If you click on "YES", registration of the system configuration and data storage will be performed.

During this process, the following message is displayed, and no Web operation is possible. Wait until the process is completed.



After registration of the system configuration and data storage are completed, the following message will be displayed.

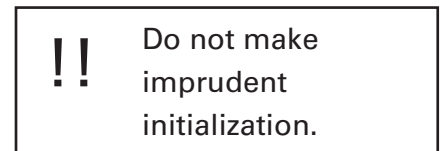


[Notes on system configuration check]

- Never perform a system configuration check unless you have actually changed the system configuration.
System configuration changes include addition, moving, and removal of units, and address change.
- Never perform a system configuration check when a power outage occurs on the air conditioner side or when temporary communication failure is generated.
If a system configuration registration is performed in such situations, the air conditioners that should be recognized may not be recognized.
- If “System configuration change!” is displayed as a result of your accidentally performing a system configuration check, never proceed to the current system configuration registration process. First take correction measures against the causal erroneous status, then click on “NO”.
If the system configuration is confirmed to be as it originally was, “No configuration change” will be displayed.
- Note that if you leave the screen with the message “System configuration change!” displayed for 1 hour or more, the current system configuration confirmation process will be automatically performed and registered.

(2) Initialization

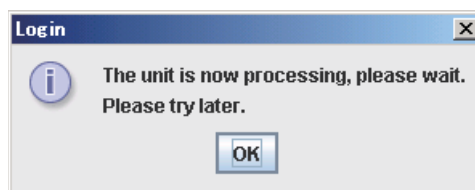
- ② If you click on the “Initialization” button, the message shown below will be displayed:
If you click on “YES”, system configuration data and setting data will be deleted.
All alarm logs and alarm e-mail delivery logs will be also deleted.



The following data will not be deleted:

- Network settings (“WEB settings” screen)
IP addresses, subnet mask, default gateway, DNS, WINS, and device name
- All user settings (“User settings” screen)

- (3) If you attempt to log in using a special/general user account while the Web Interface is in the process of a system configuration check, current system configuration registration, or initialization, the message shown below will be displayed, and you cannot log in. Wait then try to log in again.

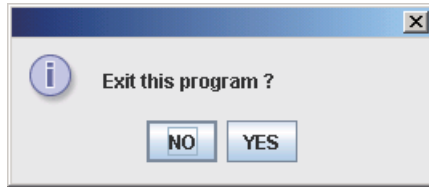


(The administrator user can log in, but Web operations will not be available. The above message will be displayed) The same message will be also displayed when an already logged in user attempts to perform any operation while the Web Interface is in the process of the above procedures.

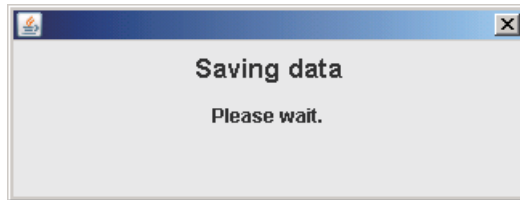
(4) To close the dialog box displayed in the process of a system configuration check, current system configuration registration, or initialization, click on “x” on the upper right corner. As the process continues after the dialog box is closed, if you attempt to perform other operation, the same message will be displayed again. The message is also displayed again if you click on ④ “Check” in the screen example.

(5) Power off

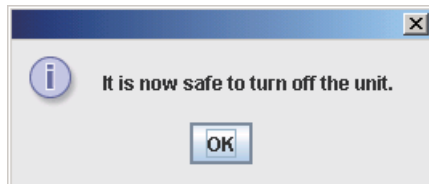
③ If you click on “Power off”, the message shown below will be displayed.



If you click on “YES”, the system is preparing for safely shutting down the Web Interface main unit. Never turn off the Web Interface main unit while the following message is displayed:



Make sure that the following message is displayed then set the Power switch of the Web Interface to OFF.



After this message is displayed, to log in again, the Power switch of the Web Interface must be set to ON again.

(6) Check button

④ When you click on the “Check” button while this button is valid, the current process of the Web Interface will be displayed.

10 Supplementary Information

■ Note on powering the system down

Always use the following procedure to power the Web Interface off:

Click on **Power off** on the “Other settings” screen.



When “Exit this program ?” is displayed, click on **OK**,



Wait until a message appears to inform you that “It is now safe to turn off the unit.”* then power the system down.

(*It may take several minutes until this message appears.)

■ Only an alarm code is displayed to notify of alarm content of air conditioners.

The content of an alarm can vary for different models, even if the alarm code is the same.

Refer to the documentation of the various models to determine the content of the alarm.

■ If errors occurred because of lightning or electromagnetic interference

Turn the Web Interface off then back on again.

(See “Note on powering the system down” above.)

As a rule, the Web Interface should be powered down only in cases such as the above.

Correct management of air conditioners is not possible when the Web Interface is powered down.

■ Note on setting the current date and time

The current date and time should be set on a regular basis, since the system clock can gain or lose up to about two minutes per month (at 25°C).

■ You cannot perform Web operations from the PC while the Web Interface is undergoing the processes described below. Wait until that process is completed, following the instructions displayed on the screen.

- During startup (after turning the Web Interface on)
- During a system configuration check
- During initialization
- During the power-down process
- 23:30–0:05 daily

■ When only one centralized control unit is installed in a system without a remote controller, if the centralized control unit is damaged, the air conditioner(s) may become inoperable, or other troubles may occur.

To avoid this problem, we recommend that you use remote controller(s) or install multiple centralized control units.

■ About passwords

Login passwords should be recorded and saved in a safe place. They should never be disclosed to third parties.

If you forget your login password, contact your dealer or service provider.

We will not be liable for any disadvantage caused by disclosure of login passwords to third parties.

10 Supplementary Information

■ About interface adaptors (optional)

You can use interface adaptors to connect equipment that can be turned on and off (fans, room air conditioners, and so on) to the Web Interface.

However, note that the following limitations apply.

For details, refer to the documentation of the equipment or contact your dealer or service provider.

▶Central control is supported for the following operations only:

- Start/stop
- Remote control prohibition (start/stop only)

Timer settings are supported, but settings other than “Start/Stop” and “Prohibit R/C” are ignored.

Remote control prohibition is possible only if reception of a prohibition signal output from the local adaptor is enabled through connection to the equipment. Even in such a case, the only operations that can be prohibited are start and stop.

▶Alarm display

Alarm details are not shown.

The “C12” code is displayed (meaning the alarm for any of the air conditioners connected with the local adaptors).

However, this is possible only when connection with a local adaptor enables transmission of the alarm signal.

▶As long as it conforms to the contact specifications of the on/off local adaptors, any type of equipment can be connected to the Web Interface. However, you should avoid connecting equipment whose operations can have grave consequences for life or property.

★ IMPORTANT ★

- Microsoft and Windows CE are trademarks of Microsoft Corporation in the United States and other countries.
Other products names are trademarks or registered trademarks of their respective holders, or copyrights of their respective holders.
- Duplication of all or part of the software and documentation of this product without the express consent of the holder of the rights to the above, and transfer of the software to another party, are prohibited by law.
- We shall not be liable for any loss, lost profits, or any incidental damages due to use of this product or the supplied software. We shall not be liable to any claim based on a third-party claim.
We shall not be liable for any disadvantage caused by malfunction of the equipment or software.
- The software supplied with this product may not be used on any other equipment.
- This product and the supplied software are subject to change without notice.
The contents of this manual are subject to change without notice.
- We shall not be liable for any violation of the patent rights of any third party stemming from use of information in this manual, or for violation of other rights.

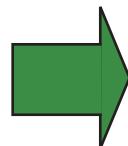
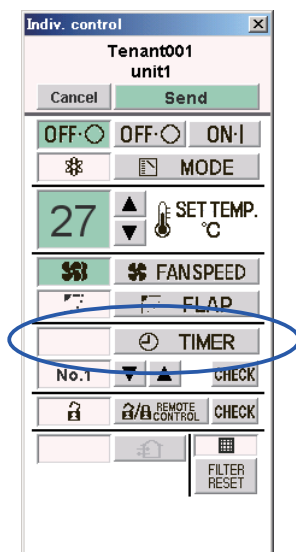
11 Troubleshooting

Before requesting service, check the following items.

Do not attempt to service the Web Interface by yourself. Doing so can be dangerous.

| Symptom | Cause |
|--|---|
| The Web Interface cannot detect a single indoor unit. Or it can find not all of them. | <ul style="list-style-type: none"> Click on the "Chk config." button in the "Other settings" screen. |
| "Page not found" or "Page not displayed" is displayed and you cannot log in. "Communication error" is displayed during Web operation. | <p>Is the Web Interface On? Is the LAN cable connected?</p> |
| Timer operation does not work. | <ul style="list-style-type: none"> Is timer operation set to "Set"? If timer operation is set to "Cancel", timer operation will not work even if a timer is selected. (*) Are the current date and time correctly set? If the current date and time are not correctly set, operation can start at an unexpected time. (See "Date and time setting" screen.) |
| A screen display is not automatically updated. | The factory default for "Auto update intv." is "Invalid". (Check the "WEB settings" screen.) |
| When local remote control operation is prohibited on the Web Interface, start/ stop operation of air conditioners is disabled because of failure in the Web Interface. | <ul style="list-style-type: none"> Emergency operations until our service person arrives: Power down the Web Interface and power the indoor units down then back up again. Operation with the local remote controllers will become possible. This cannot be done in a remote control-free system. |
| After the recovery from a power outage, the equipment did not come on automatically according to program timer settings. | <ul style="list-style-type: none"> The Web Interface does not power up equipment automatically by program timer after a power outage. The setting for the next programmed time will be executed when the time arrives. |

(*) When timer operation is set to "Set" or "Cancel", the timer operation indication on the remote controller screen will be as shown below. Each time you click on "TIMER", the setting will change from "Set" to "Cancel" or vice versa.



When timer is set to "Set"

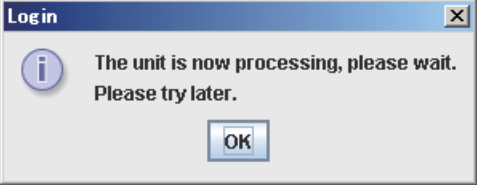

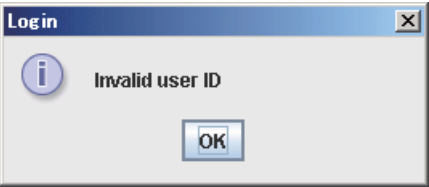
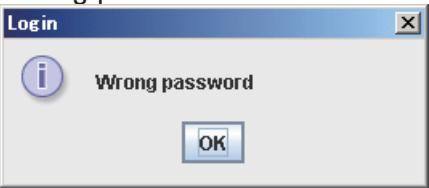



When timer is set to "Cancel"



11 Troubleshooting

- When the Internet is used for connection of the Web Interface to the PC, take security measures, such as installing an optional firewall.
- The warning messages to be displayed during Web operations, their causes, and corrective measures are shown in the table below.

| Warning message | Meaning and cause | Corrective measures |
|---|--|---|
| <p>The unit is now processing, please wait. Please try later.</p>  | <p>The Web Interface is in the process of setting. The access from the Web is busy.</p> | <p>While the Web Interface is undergoing the following processes, Web operations are not possible:</p> <ul style="list-style-type: none"> • During startup (after turning the Web Interface on) • During system configuration check • During initialization • During power-off process • 23:30-0:05 daily <p>Wait until the process is completed then try again.</p> |
| <p>Communication error</p>  | <p>The Web Interface is not activated. (power-down, etc.) Failure in the LAN cable or LAN</p> | <p>Try again. Check that the Web Interface is activated. Check the LAN cable and LAN.</p> |
| <p>Invalid user ID</p>  | <p>You have specified an invalid user ID for login.</p> | <p>Retry login using a proper user ID that has been registered in the Web Interface.</p> |
| <p>Wrong password</p>  | <p>You have specified an invalid password for login.</p> | <p>Retry login using a proper password that has been registered in the Web Interface.</p> |
| <p>That user is logged in already.</p>  | <p>An administrator user attempted to log in while another administrator user was already logged in.</p> | <p>Log off the administrator user who has already logged in first.</p> |

12 Care

- **Unplug the power cord before cleaning the Web Interface.**

The system has high-voltage connectors and other dangerous components. Always power the system down and unplug the power cord before cleaning it.

- **Use a neutral solvent.**

To clean the main unit, use a soft cloth slightly moistened with lukewarm water or a neutral solvent.

Do not use volatile agents, such as benzine and thinner, abrasives, or pesticides. Doing so can damage painted surfaces.

- **Avoid direct contact with water.**

Do not allow water to contact the product directly.

Insulation will be impaired, which may result in damage or electrical shorts.

- **Do not disassemble.**

Do not disassemble the Web Interface.

Doing so may damage the unit or cause electrical shock and is very dangerous.

- **Check the mounting of components.**

Several times a year, check to make sure that the mounting of components has not been weakened by rust or corrosion.

13 Specifications

| | | |
|-------------------------------------|--|--|
| Model name | CZ-CWEBC2 | |
| External dimensions | (H)248 × (W)185 × (D)80 mm | |
| Method of installation | Inside the control panel | |
| Maximum number of connectable units | 64 air conditioners (indoor units) | |
| Timer precision | ± Approx. 2 minutes/month (normal temperature: 25°C) | |
| Timer | Setting unit | 1 minute |
| | Operation | 50 times/day 50 types of daily timer / 50 types of weekly timer |
| | Program cycle | 1 week |
| Temperature/humidity ranges for use | 5°C–40°C / 20%–80% | |
| Power requirements | Single-phase, 100–240 V ~, 50/60 Hz | |
| Power consumption | Max. 17 W | |
| Weight | 2.2 kg | |

Authorized representative in EU
Panasonic Testing Centre
Panasonic Marketing Europe GmbH
Winsbergring 15, 22525 Hamburg, Germany