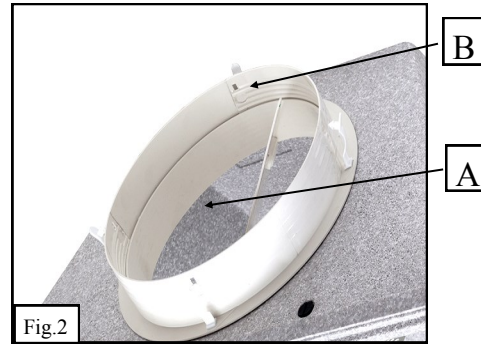
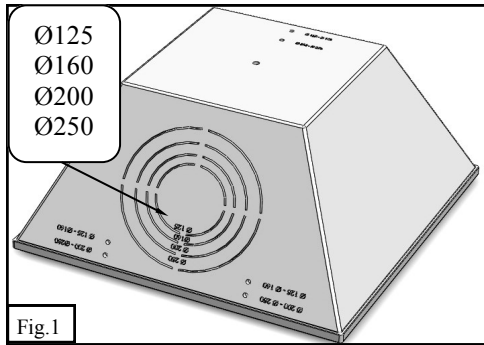
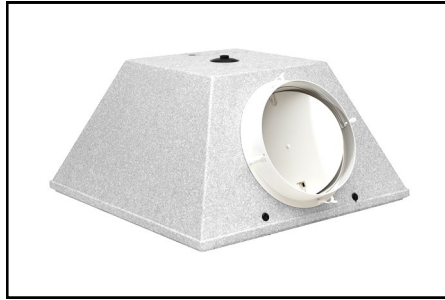
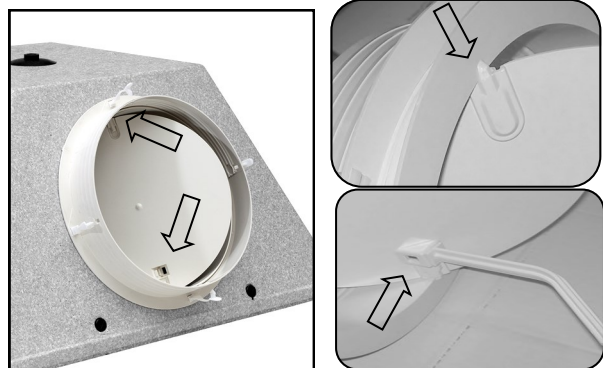
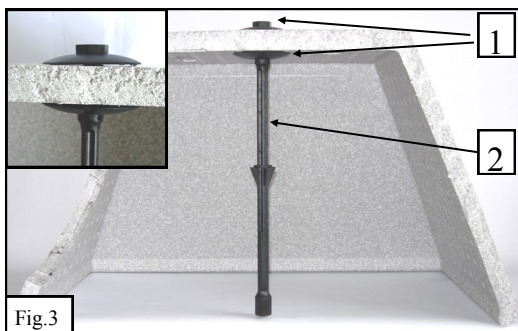


# MOUNTING INSTRUCTIONS - PLENUM IN POLYSTYRENE



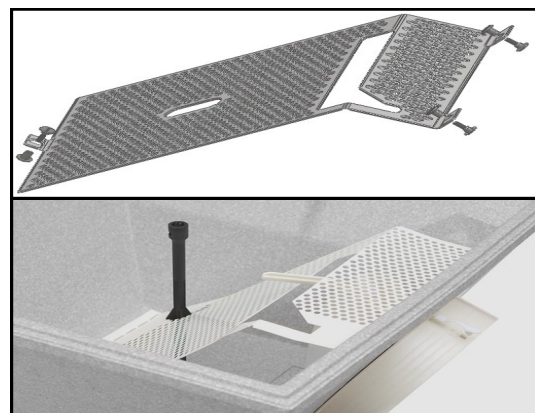
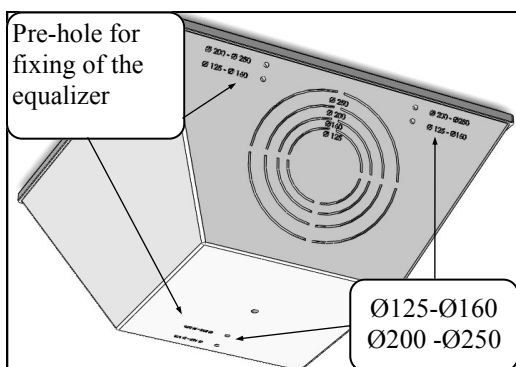
- Carry out the hole for the connection following the edge indicated on the side of the plenum (picture 1), with the same size of the connection to mount (Ø250, Ø200, Ø160, Ø125).

- Insert the male connection A inside the hole and screw the female connection B as shown in picture 2.



- Position the 2 washers (1), insert the bar (2) and afterwards screw as shown in picture 3.

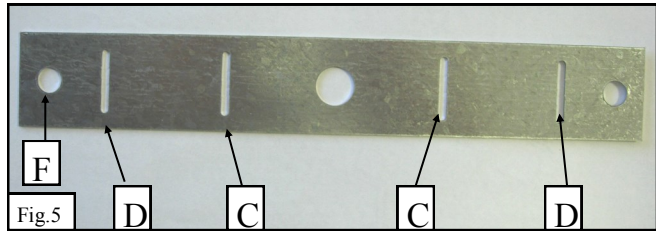
- Mount the damper taking care of positioning the command-bar as shown in the picture, hooking it to the pivots pre-



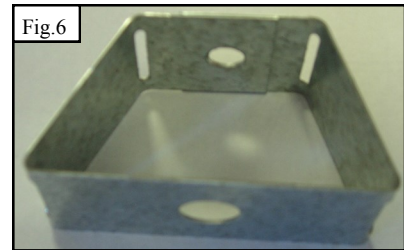
- Make the holes in the indicated position for the fixing of the equalizer following the diameter of the connection.
- Position the equalizer.

- Fix the equalizer through the fixing screws, taking care of positioning the command-bar, the damper and the bar for the mounting of the diffuser in the special slots as shown in the picture.

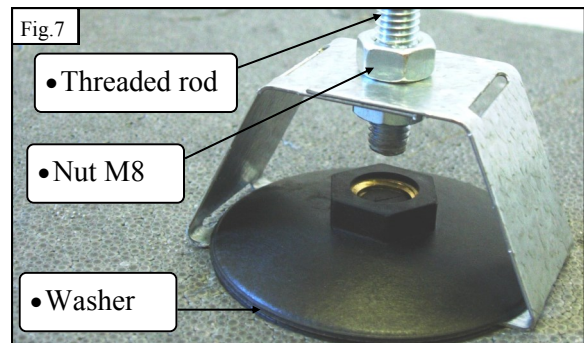
# MOUNTING INSTRUCTIONS WITH THREADED ROD



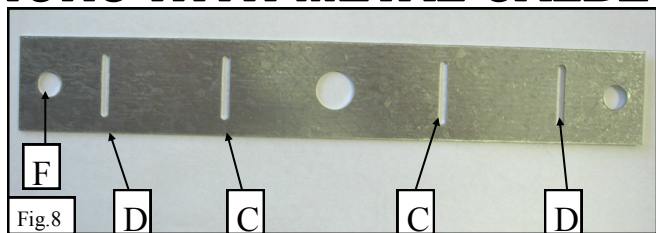
- Manually fold the hanger slots along C and D (picture 5): you will obtain the shape shown in picture 6. Pay attention that the holes F match, in order to enter the fixing element (picture 6).



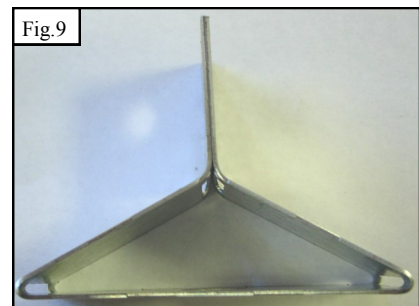
- Fix the hanger to the body of the plenum using the external threaded washer. Pass the threaded rod in the holes Ø8 of the hanger and tighten the nuts as shown in picture 7.



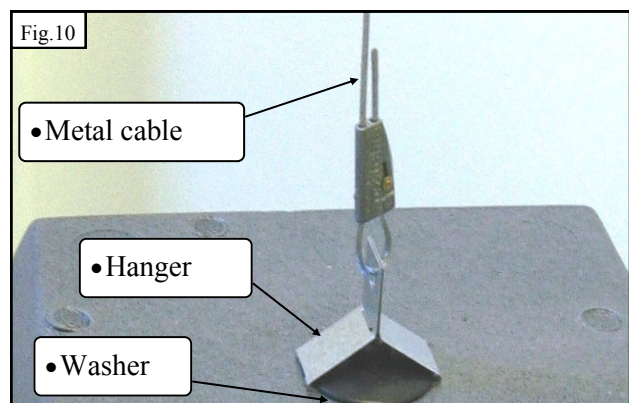
# MOUNTING INSTRUCTIONS WITH METAL CALBE



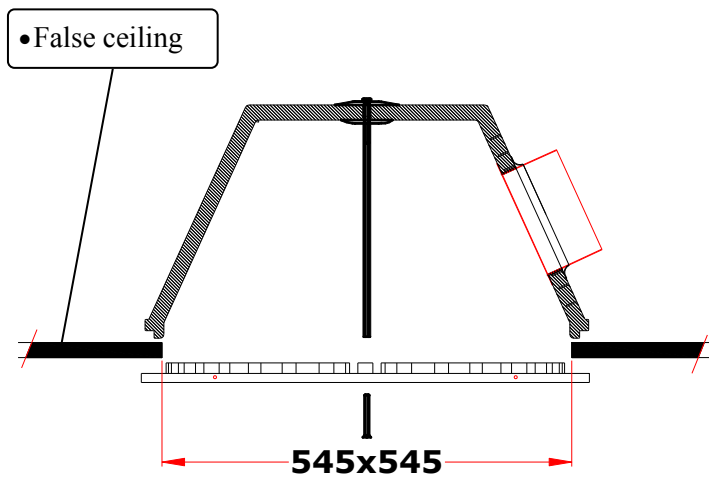
- Manually fold the hanger slots along C and D (picture 8) in order to obtain the shape shown in picture 9. Pay attention that the holes F match to enter the fixing element (picture 9).



- Fix the hanger to the body of the plenum using the external threaded washer. Pass the metal cable (picture 10) in the holes F of the hanger.

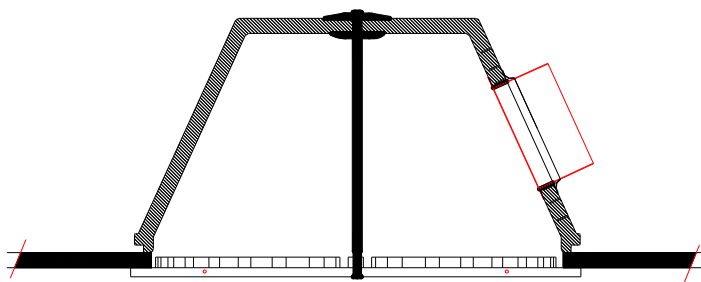


# ***MOUNTING INSTRUCTION IN FALSE CEILING***



## **6. Installation in false ceiling:**

- Make a 545 x 545 mm hole in the panel of the ceiling and position the plenum box and the diffuser as shown in the picture.



## **7. Mounting of diffuser:**

- Position the diffuser as shown in the picture and tighten the screw to the bar, making sure to apply the right screwing force in order not to deform the diffuser, then insert the cap screw-cover.