

INTELLIGENT CONTROLLER

Access and Operation by Web Browser

CONTRÔLEUR INTELLIGENT

Accès et fonctionnement avec le navigateur Web

TOUCH SCREEN CONTROLLER

Zugriff und Betrieb über Webbrowser

CONTROLORE INTELLIGENTE

Accesso e funzionamento tramite browser Web

CONTROLADOR INTELIGENTE

Acesso e funcionamento por browser da Web

CONTROLADOR INTELIGENTE

Acceso y funcionamiento a través del navegador Web

Интеллектуальный контроллер

Доступ и работа с использованием веб-браузера

ІНТЕЛЕКТУАЛЬНИЙ КОНТРОЛЕР

Доступ і керування з веб-браузера

Operation Manual

Manuel d'instructions

Bedienungsanleitung

Manuale di istruzioni

Manual de operações

Manual de funcionamiento

Руководство по эксплуатации

Інструкція з експлуатації

CZ-256ESMC2

EN

FR

DE

IT

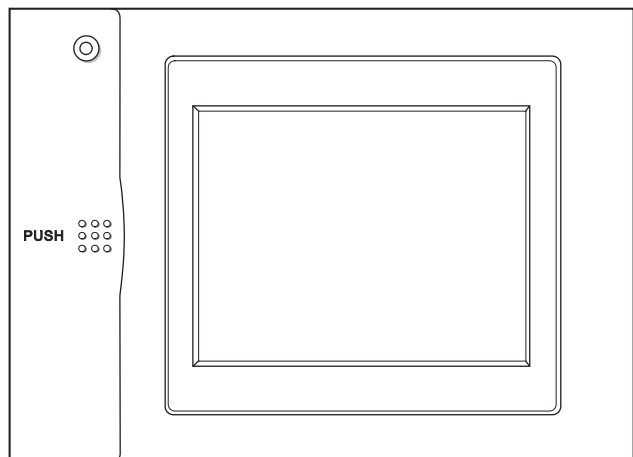
PT

ES

RU

UK

- After reading this manual, store it in a convenient place.
- Après avoir lu ce manuel, conservez-le en lieu sûr.
- Heben Sie diese Anleitung nach dem Durchlesen an einem günstigen Ort auf.
- Dopo aver letto il presente manuale, conservarlo in un luogo adeguato.
- Depois de ler este manual, guarde-o num lugar queesteja sempre à mão.
- Después de leer este manual, almacénelo en un lugar adecuado.
- После прочтения этого руководства, сохраните его в подходящем месте.
- Після прочитання зберігайте цей посібник у зручному місці.



Centralized Control System

CZ-256ESMC2

Operation Manual

INTELLIGENT CONTROLLER

Access and Operation by Web Browser

Thank you for choosing the CZ-256ESMC2 Intelligent Controller. Before using the system, be sure to read this manual carefully.

Contents

- 1. Computer Environment
 - Requirements 1
- 2. Log-in..... 1
- 3. Screen Display and Operation 2
 - 3-1. [Each Tenant] Screen 2
 - 3-2. [Each Tenant Details] Screen.... 5
 - 3-3. [All Units] Screen..... 5
 - 3-4. Distribution Ratio/Usage:
 - Data Download Screen 6
 - 3-5. Alarm Log Screen 7
 - 3-6. Mail Send Log Screen 9
 - 3-7. Program Timer Screen 10
 - 3-8. Tenant Holiday/
 - Timer Special Day Screen..... 12
 - 3-9. Prohibit Remote Control
 - Screen 13
 - 3-10. WEB Settings Screen 14
- 4. Supplementary Information 18

Access and Operation by Web Browser

Accessing the Intelligent Controller from your computer allows you to monitor/operate air-conditioning equipment using a Web browser.

1. Computer Environment Requirements

In order to use the web browser of your computer to connect to the Intelligent Controller and monitor/operate air-conditioning equipment, the following environment requirements must be met.

Supported browser : Internet Explorer 6.0 or later
 Java applet : Sun Microsystems Java Plugin Ver 1.4.2 or later
 Screen resolution : 1024 × 768 recommended

2. Log-in

To log in to the Intelligent Controller, enter the following into the address bar of the web browser:

http://[Intelligent Controller address]/SACWWW/index_[language code].asp

For example, if the Intelligent Controller address is 192.168.0.2 and you want to connect to the English page, enter:

http://192.168.0.2/SACWWW/index_en.asp

If the DNS is used and ID name (device name) of the Intelligent Controller is “WindowsCE0”, enter:

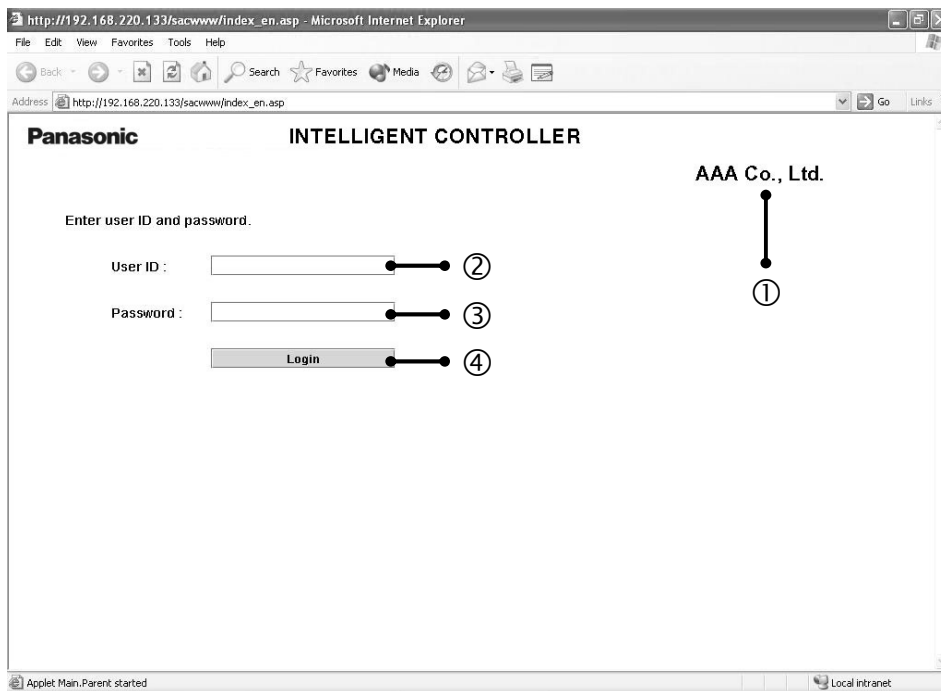
http://WindowsCE0/SACWWW/index_en.asp.

The language codes are as follows.

English : en	French : fr	German : de	Italian : it
Portuguese: pt	Spanish : es		
Chinese : zh	Japanese: ja	Korean : ko	

This will cause the web browser to connect to the Intelligent Controller, and a screen such as shown below appears.

Enter the user ID and password set for the Intelligent Controller to log in.

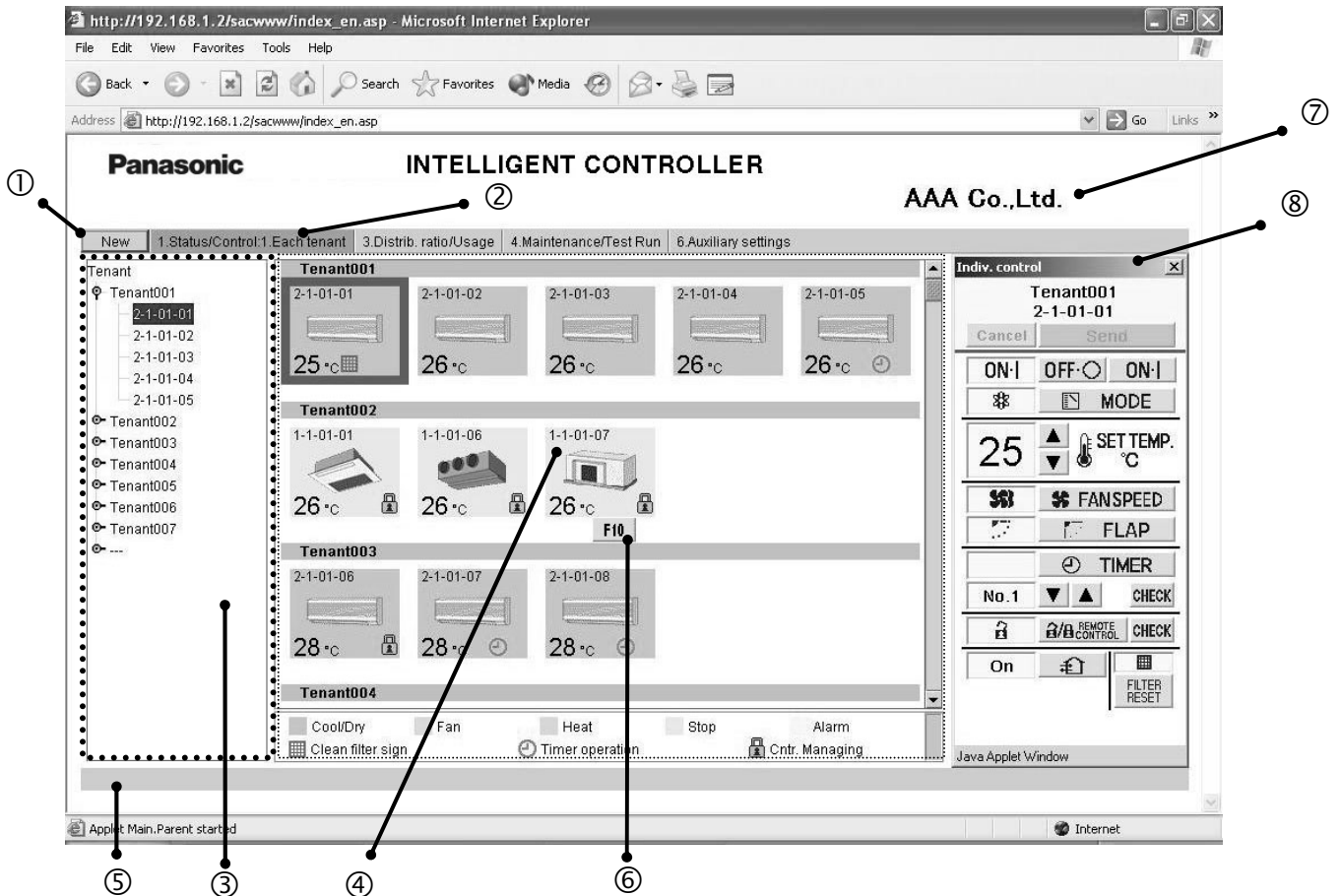


- ① Shows the site name that was set for Intelligent Controller.
- ② Enter the user ID that was set for Intelligent Controller.
- ③ Enter the password that was set for Intelligent Controller.
- ④ Click the **Login** button.

3. Screen Display and Operation

3-1. [Each Tenant] Screen

After you log in to the Intelligent Controller, or when you use the menu to select [1. Status/Control : 1. Each tenant], a screen such as shown below appears. (Screen details may differ depending on the user logged in.)



① **New** button

Updates the screen to the latest information.

② **Menu**

(The menu may differ depending on the user logged in. The following menu appears when logged in as an administrator.)

Lets you select one of the following screens.

★Administrator Menu

New	1.Status/Control:1.Each tenant	3.Distrib. ratio/Usage	4.Maintenance/Test Run	6.Auxiliary settings
	1.Each tenant 2.Each tenant details 5.All units			

★Special User Menu

New	1.Status/Control:1.Each tenant	4.Maintenance/Test Run
-----	--------------------------------	------------------------

★General User Menu

New	1.Status/Control:1.Each tenant
-----	--------------------------------

③ **Tenant list**

Shows the indoor unit and tenant structure currently accessed by the Intelligent Controller in a list. Select indoor units by clicking different parts of the list.

Clicking on the part highlighted in the screen example above will select the individual indoor unit, while clicking on the tenant name (Tenant001, Tenant002, etc. in the example) will select all indoor units for that tenant. Clicking on the top of the list (Tenant in the example) will select all indoor units of the site.

Only the tenants that can be operated by the user permission used to log in (administrator, special, general) are displayed.

④ **Icon display area**

Shows icons for indoor units connected to the Intelligent Controller.

Clicking on an icon whose frame is shown in reverse will select that unit. Clicking on a tenant name will select that tenant.

If an Interface Adaptor is used, the icon display becomes light purple during the ON operation.

⑤ **Notification column**

Shows information about the connection status of web browser and Intelligent Controller, etc.

⑥ **Alarm code display**

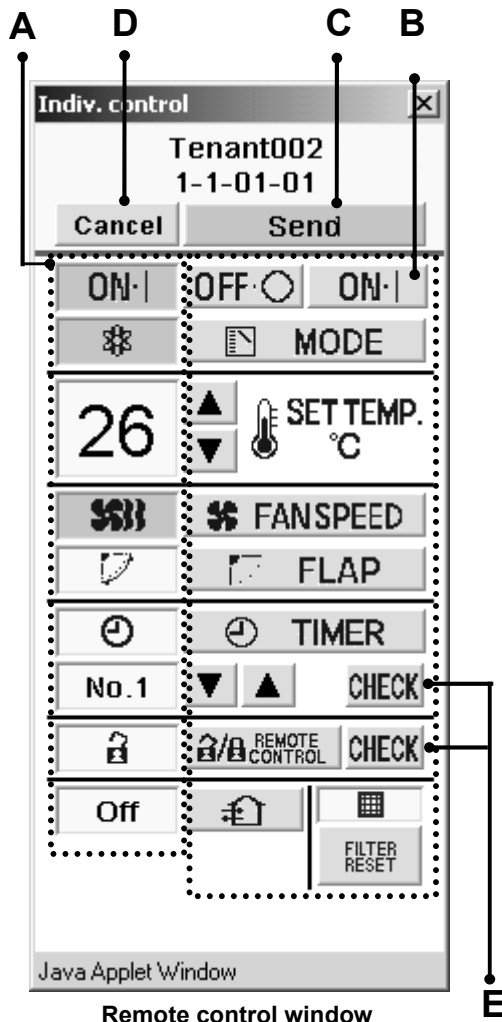
Shows the alarm code as a tooltip when the cursor is moved over the icon of the indoor unit for which the alarm is occurring.

⑦ **Site name**

The "Site name" set in the Intelligent Controller appears.

⑧ **Remote control window**

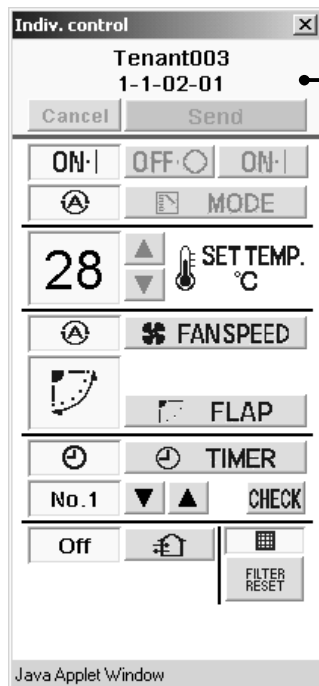
Shows the Remote control window. When this window has been closed, clicking on the indoor unit or making another selection will bring it up again.



A Status/Control screen section

Shows the status of the indoor unit and the operation condition.

When a control operation is performed, the background color of the respective field changes and the **Send** button becomes available. Clicking the **Send** button will send all operation steps performed up to this point to the Intelligent Controller. If you instead click the **Cancel** button or perform a step such as selecting another indoor unit, operation steps performed up to this point will be canceled.



Remote control window for general user

B Control section

Shows controls for possible operation steps such as start/stop switching, operation mode selection, temperature selection, fan speed setting, fan direction setting etc.

If the logged in user has only general user privileges, buttons for restricted operation steps will be grayed out (inactive).

The **REMOTE CONTROL** and **CHECK** buttons will not be displayed.

C **Send** button

Sends the changes made to the Intelligent Controller.

D **Cancel** button

Cancel the changes made.

E **CHECK** buttons

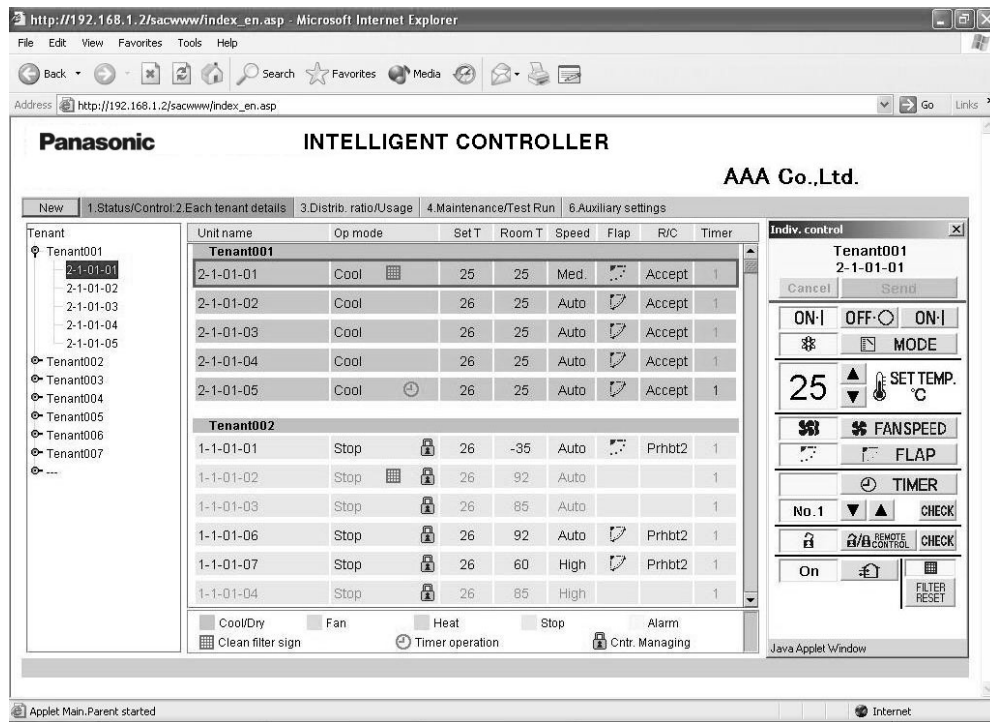
Used to check the timer setting and remote control prohibition setting status.

(See "3-7. Program Timer Screen" and "3-9. Prohibit Remote Control Screen".)

Clicking the **Return** button will return the display to the previous screen.

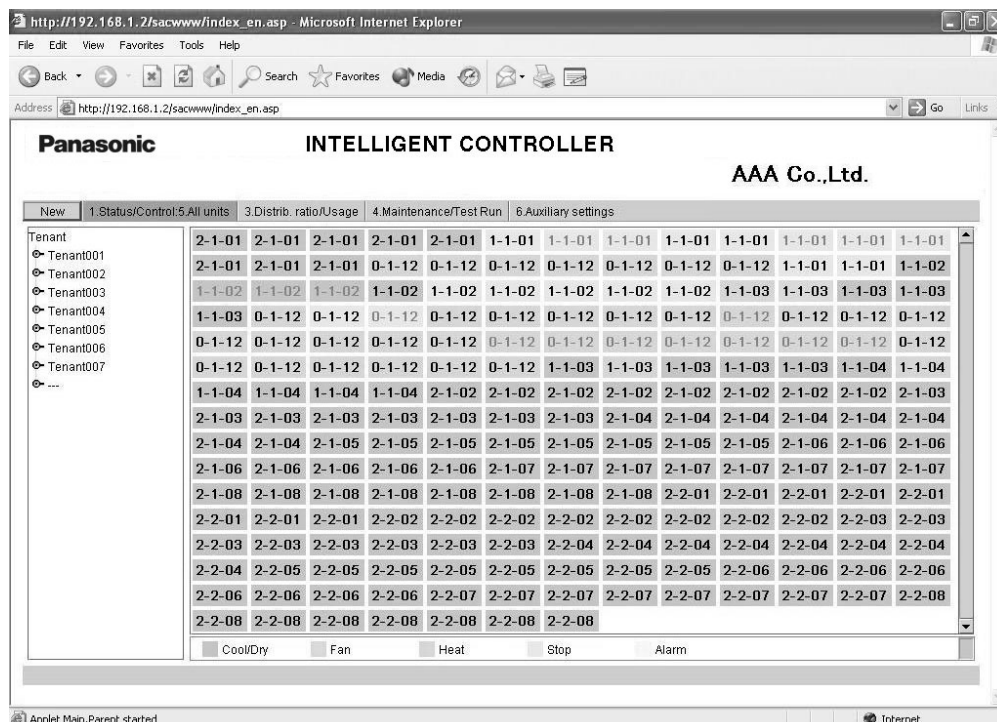
3-2. [Each Tenant Details] Screen

When you use the menu to select [1. Status/Control : 2. Each tenant details], a screen such as shown below appears. (Screen details may differ depending on the user logged in.) Operation principles for this screen are similar to those of the “3-1. [Each tenant] screen”.



3-3. [All Units] Screen

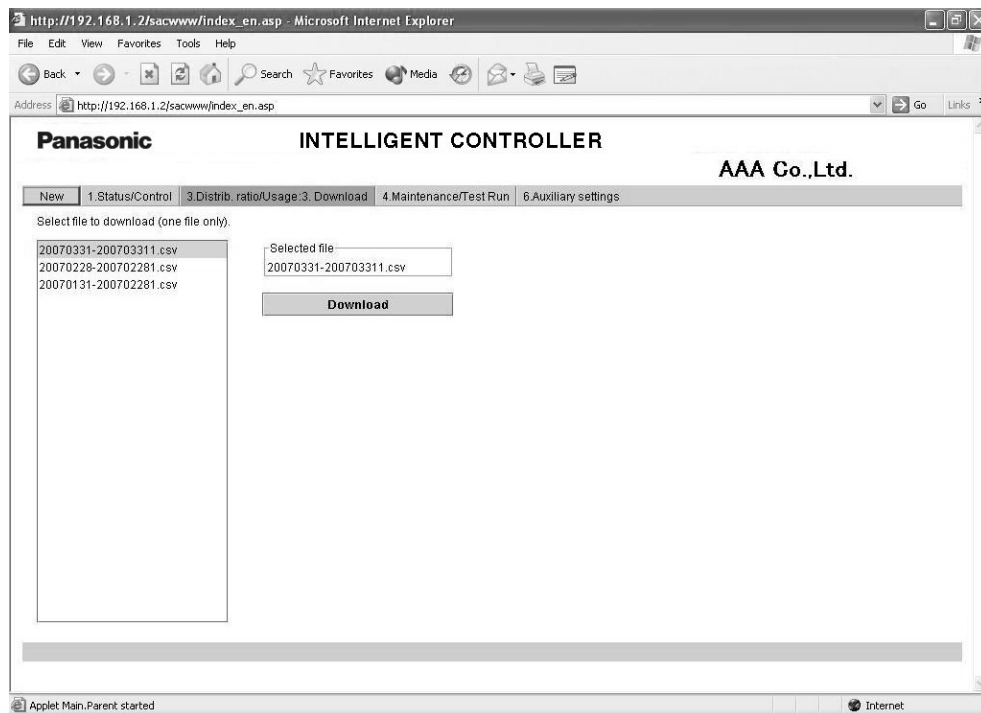
When you use the menu to select [1. Status/Control : 5. All units], a screen such as shown below appears. (Screen details may differ depending on the user logged in.) A maximum of 256 indoor units are displayed in 1 screen. Operation principles for this screen are similar to those of the “3-1. [Each tenant] screen”.



3-4. Distribution Ratio/Usage: Data Download Screen

When you use the menu to select [3. Distrib. ratio/Usage : 3. Download] while logged in as an administrator, a screen such as shown below appears.

You can download files by selecting them and clicking the “Download” button.

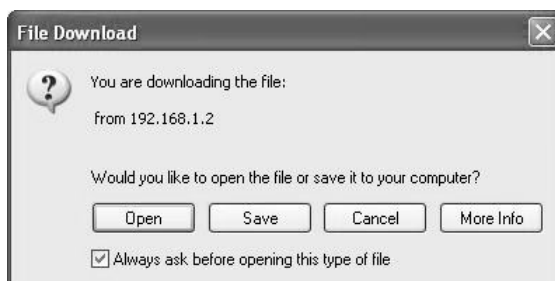


A cut-off data file appears for each piece of cut-off data that appears on the Intelligent Controller unit. Be aware, however, that the dates that appear on the Intelligent Controller unit appear as file names on this screen.

For example, cut-off data that appears as “01/Apr-30/Apr” on the Intelligent Controller will appear as “20070401-200704301.csv” on this screen.

When the following message appears after clicking the “Download” button, select “Open” or “Save”.

- “Open” Open the selected CSV file using spreadsheet software.
- “Save” Select a folder and save the CSV file.

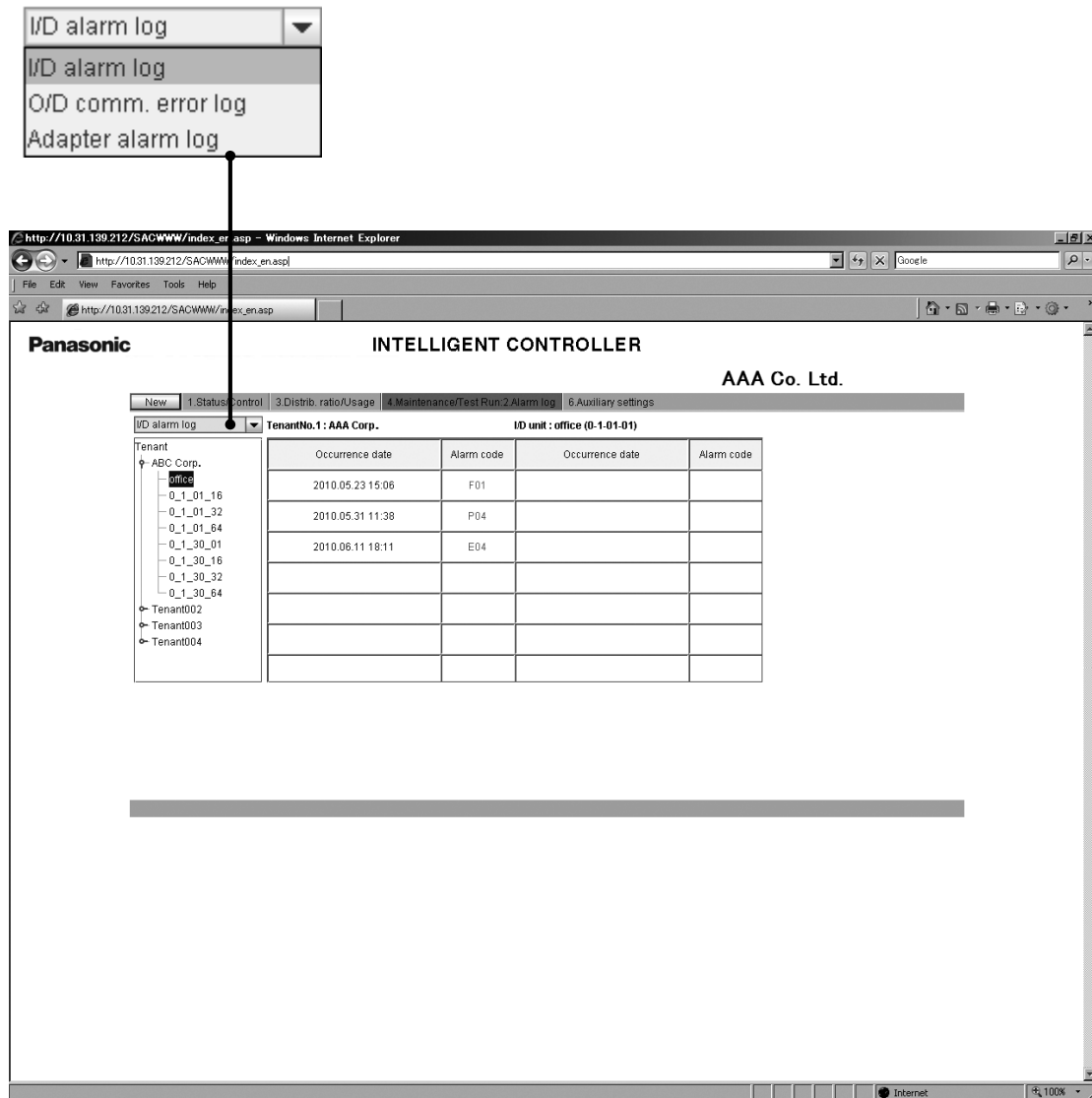


3-5. Alarm Log Screen

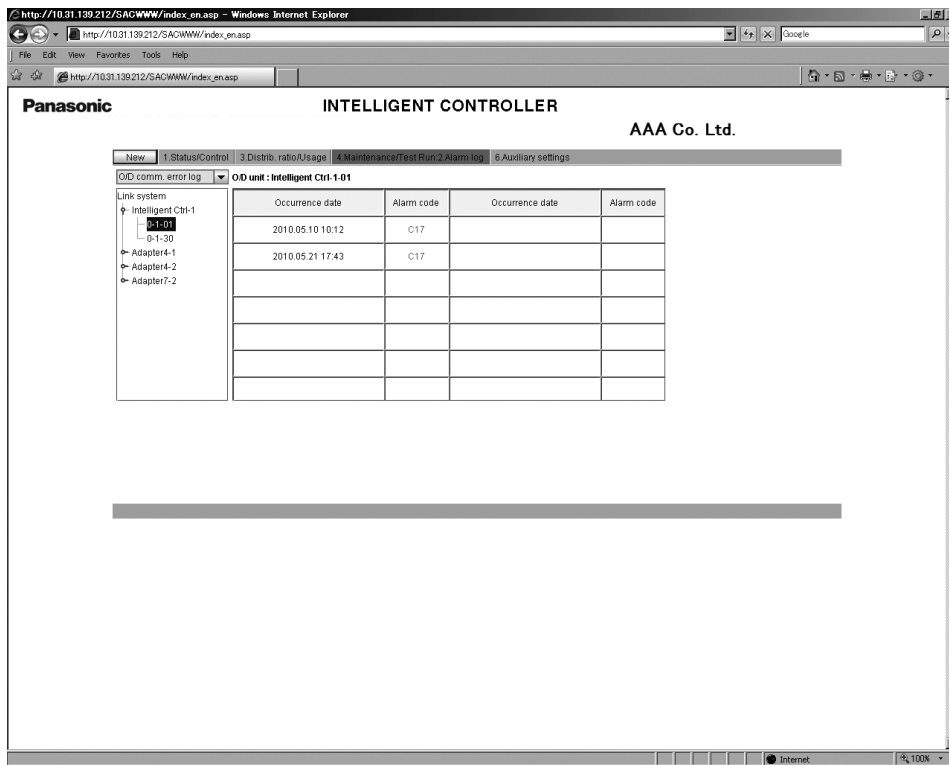
When you use the menu to select [4. Maintenance/Test Run : 2. Alarm log] while logged in as an administrator or special user, a screen such as shown below appears.

When an indoor unit is selected in the tree section, the previous 14 occurrences are displayed. (Same as the display on the Intelligent Controller.)

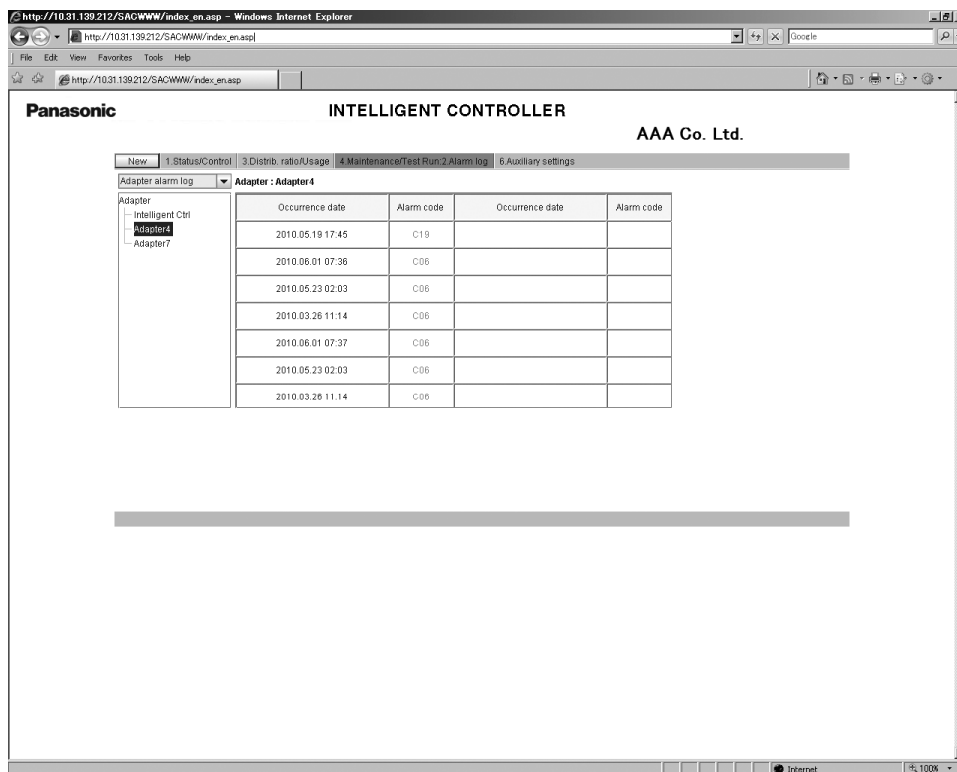
“I/D alarm log”, “O/D comm. error log”, and “Adapter alarm log” can be selected from the drop-down list.



[O/D comm. error log] logs the history of errors in communication between the outdoor unit and the Intelligent Controller or the Communication Adaptor.

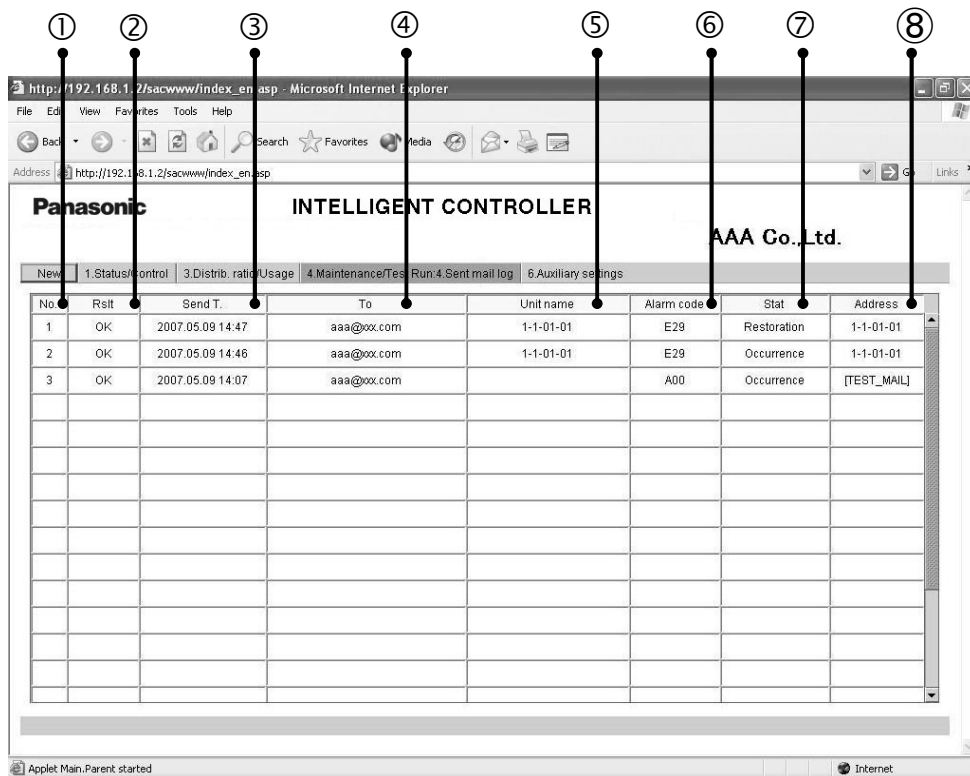


[Adapter alarm log] logs the history of warnings as determined by the Intelligent Controller or the Communication Adaptor.
(Duplicate adaptor addresses, communication error between the Intelligent Controller and adaptor, etc.)



3-6. Mail Send Log Screen

When you use the menu to select [4. Maintenance/Test Run : 4. Sent mail log] while logged in as an administrator, a screen such as shown below appears.



① No.

The entry numbers for the sent mail log. With a maximum of 20 (No. 1 to 20) possible entries, the newest entries appear at the top of the list. When the number of entries exceeds 20, entries are deleted starting with the oldest.

As up to three mail recipients can be specified, up to three log entries can be recorded for one alarm occurrence.

② Rslt

“OK” appears when an alarm mail is sent properly, and “NG” appears when sending fails.

③ Send T.

The date and time the alarm mail was sent (or sending was attempted).

④ To

The recipient address the alarm mail was sent to. If the address is too long, only part of the address may appear.

⑤ Unit name

The name of the indoor unit for which the alarm occurred.

⑥ Alarm code

The code for the alarm that occurred.

⑦ Stat

“Occurrence” appears when a notification of an alarm occurrence is sent, and “Restoration” appears when a notification of an alarm restoration is sent.

⑧ Address

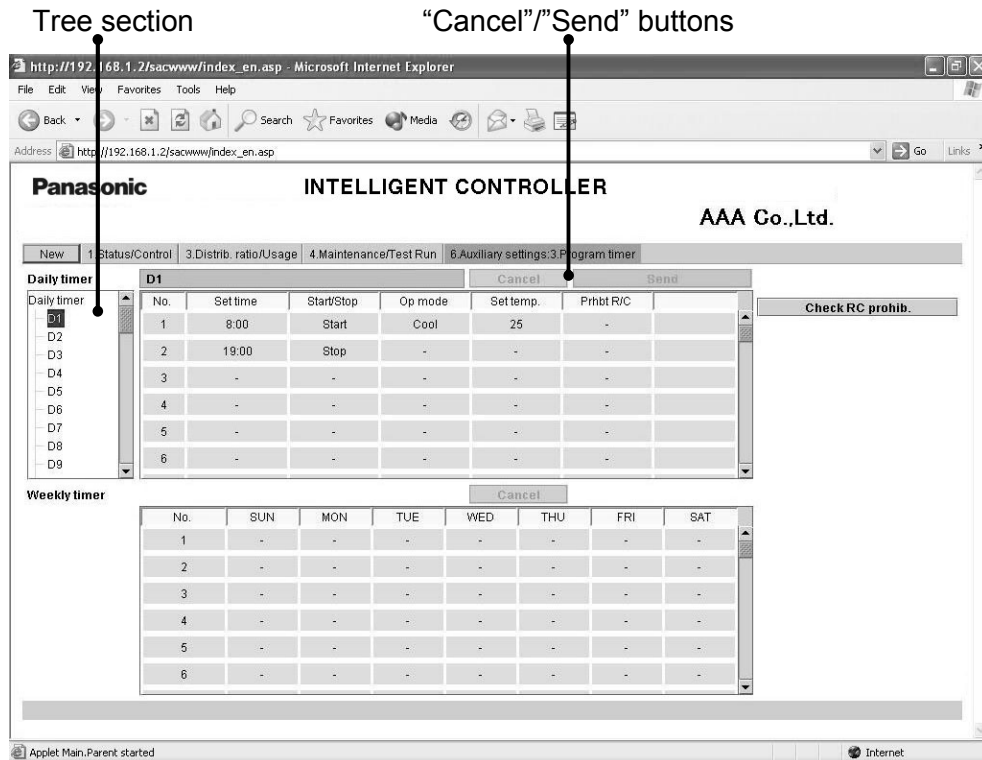
The address of the indoor unit for which the alarm occurred.

The address follows the format, “adaptor number - link number - system (outdoor) number - indoor number”.

When a test mail is sent, “TEST_MAIL” appears.

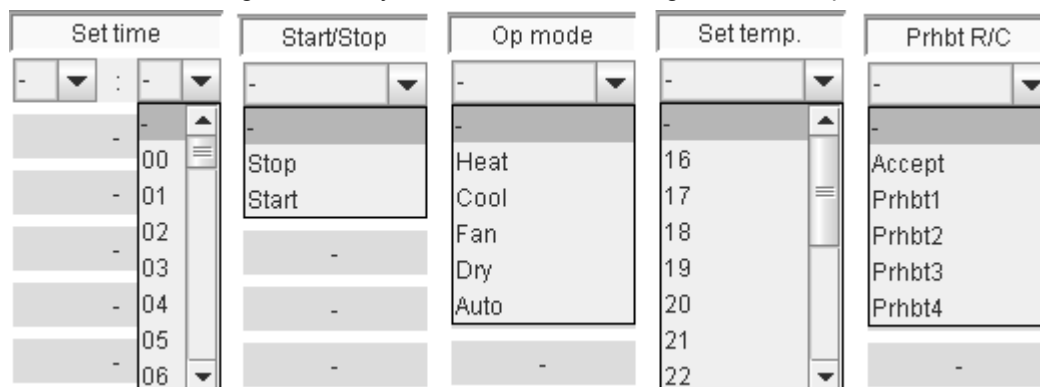
3-7. Program Timer Screen

When you use the menu to select [6. Auxiliary settings : 3. Program timer] while logged in as an administrator, or use the “CHECK” button for timer operation in the remote control window, a screen such as shown below appears. (As non-administrator users can only confirm settings and not configure them, the “Cancel” and “Send” buttons only appear when logged in as an administrator.)



When the daily timer number is selected in the tree section, the current setting status is displayed.

Click the desired setting item, and you can select the setting from the drop-down list as shown below.



Drop-down lists are also displayed for the weekly timer in the same way as the daily timer number.

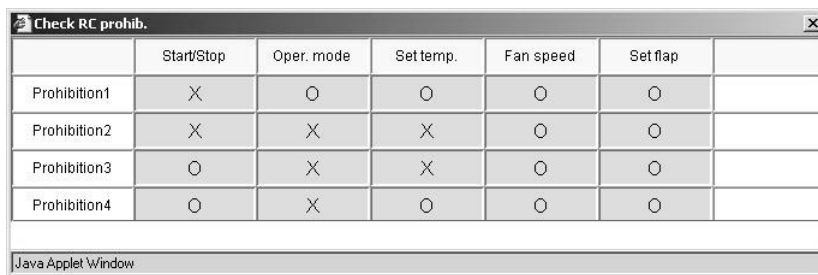
You can only configure daily timer settings one number (D1, D2, etc.) at a time. If you attempt to switch to D2 settings in the middle of configuring D1 settings, for example, the message “Send for each daily timer.” appears.



In such a case, apply or cancel the current settings by clicking the “Send” or “Cancel” button, respectively, before configuring the next daily timer number.

For details on the settings, refer to the operation manual for the Intelligent Controller.

The “Check RC prohib.” button appears in the above screen when logged in as an administrator or special user. When you click on this button, a screen such as shown below appears.

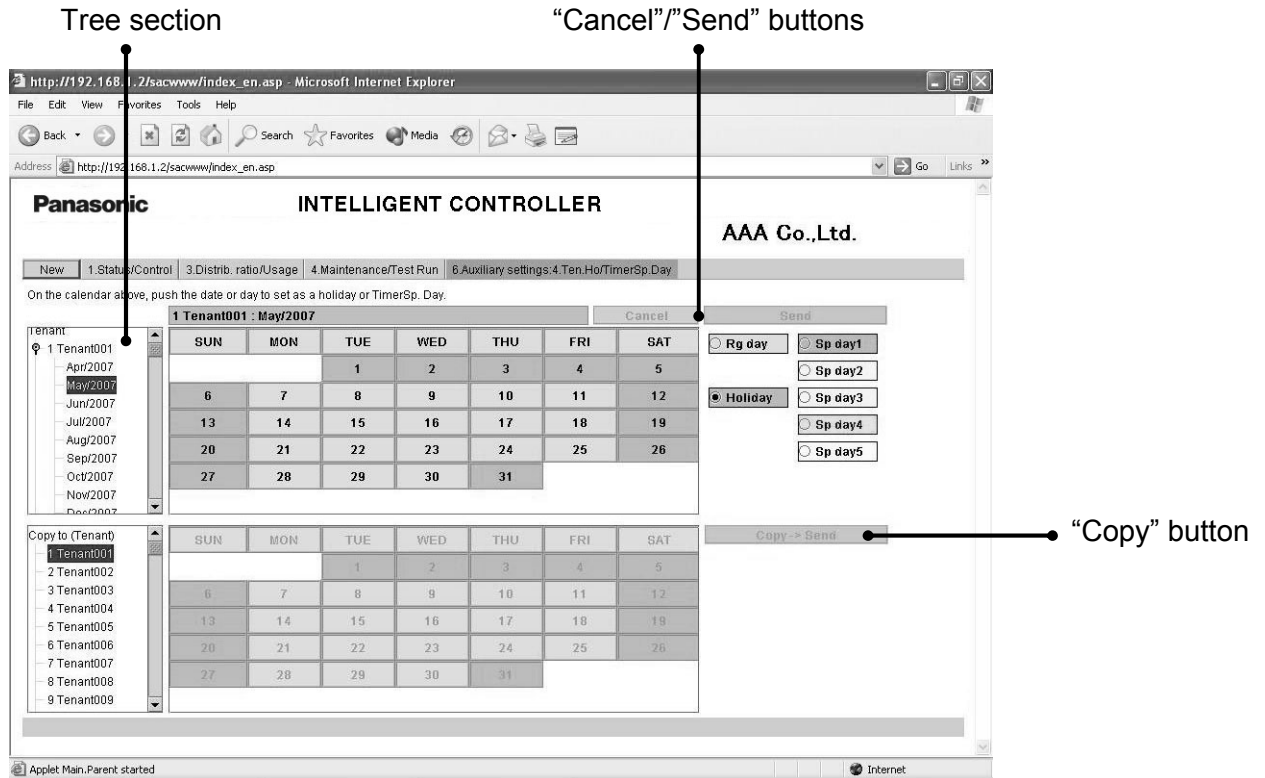


	Start/Stop	Oper. mode	Set temp.	Fan speed	Set flap	
Prohibition1	X	O	O	O	O	
Prohibition2	X	X	X	O	O	
Prohibition3	O	X	X	O	O	
Prohibition4	O	X	O	O	O	

Java Applet Window

3-8. Tenant Holiday/Timer Special Day Screen

When you use the menu to select [6. Auxiliary settings : 4. Ten.Ho/TimerSp.Day] while logged in as an administrator, a screen such as shown below appears.



You can only configure tenant holiday/timer special day settings one tenant at a time. If you attempt to switch to Tenant002 settings in the middle of configuring Tenant001 settings, for example, the message "Send for each tenant." appears.



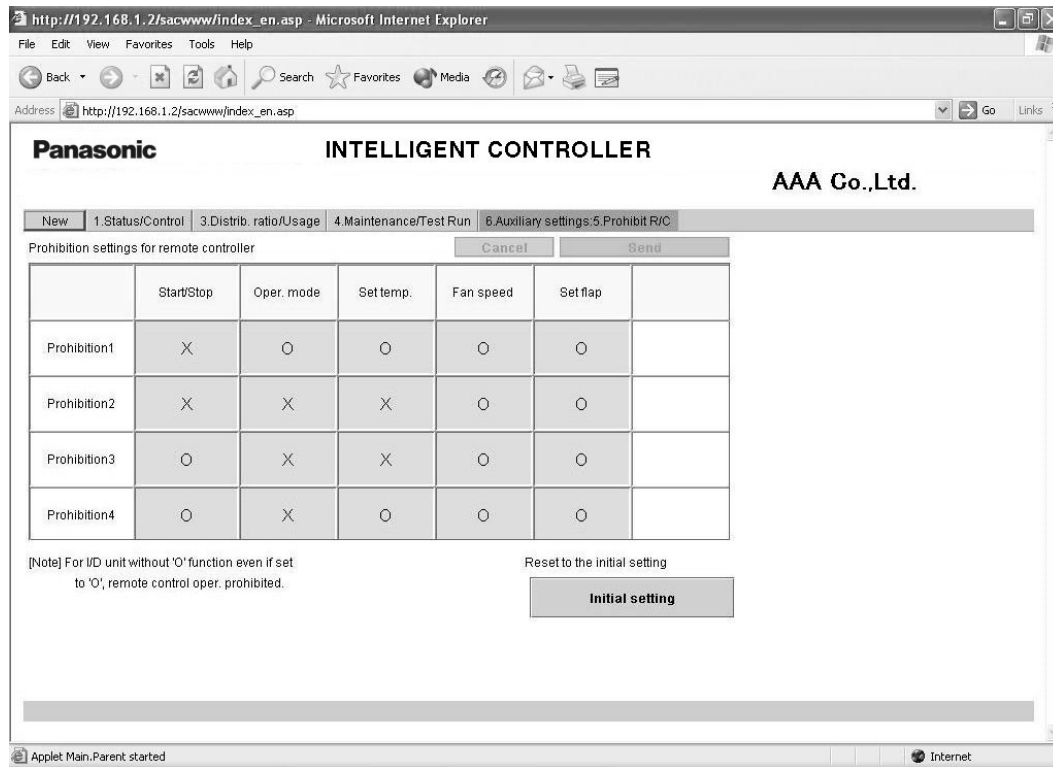
In such a case, apply or cancel the current settings by clicking the "Send" or "Cancel" button, respectively, before configuring the next tenant.

To copy changed settings, click the "Send" button and apply the settings before copying.

For details on the settings, refer to the operation manual for the Intelligent Controller.

3-9. Prohibit Remote Control Screen

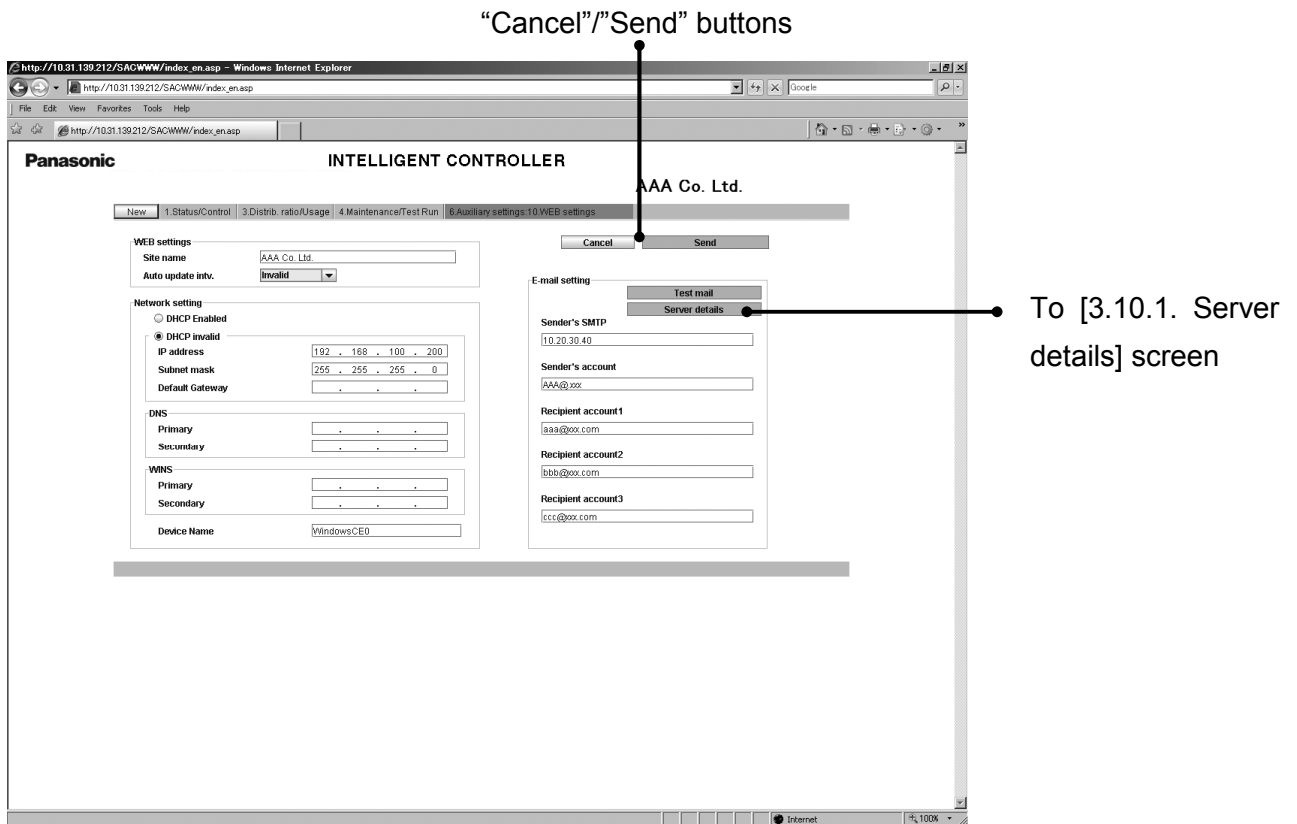
When you use the menu to select [6. Auxiliary settings : 5. Prohibit R/C] while logged in as an administrator, or click the “CHECK” button for prohibit remote control in the remote control window, a screen such as shown below appears. (As non-administrator users can only confirm settings and not configure them, the “Cancel” and “Send” buttons only appear when logged in as an administrator.)



For details on the settings, refer to the operation manual for the Intelligent Controller.

3-10. WEB Settings Screen

When you use the menu to select [6. Auxiliary settings” : 10. WEB settings] while logged in as an administrator, a screen such as shown below appears.



For details on the settings, refer to the operation manual for the Intelligent Controller.

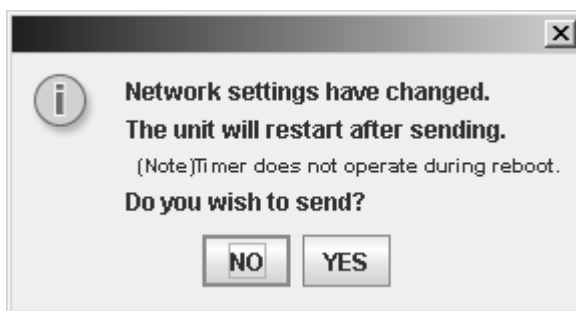
Input values have the following restrictions.

Setting Item	Input Range	Input Character Limitations
Site name	Up to 40 characters	One-byte “=” is prohibited
IP address (each block)	Numbers 0 to 255	“0.0.0.0” and “255.255.255.255” are prohibited
Subnet mask	Numbers 0 to 255	“0.0.0.0” is prohibited
Default Gateway		
DNS (Primary, Secondary)		
WINS (Primary, Secondary)		
Device Name	Alphanumeric characters, “-”, and “_” Up to 15 characters	First character must be alphabetic character. “-” and “_” are prohibited as ending characters
Sender's SMTP	Up to 40 alphanumeric characters and symbols	Symbols are “@” “.” “_” “.” only
Sender's account		“=” is prohibited
Recipient account 1 to 3		

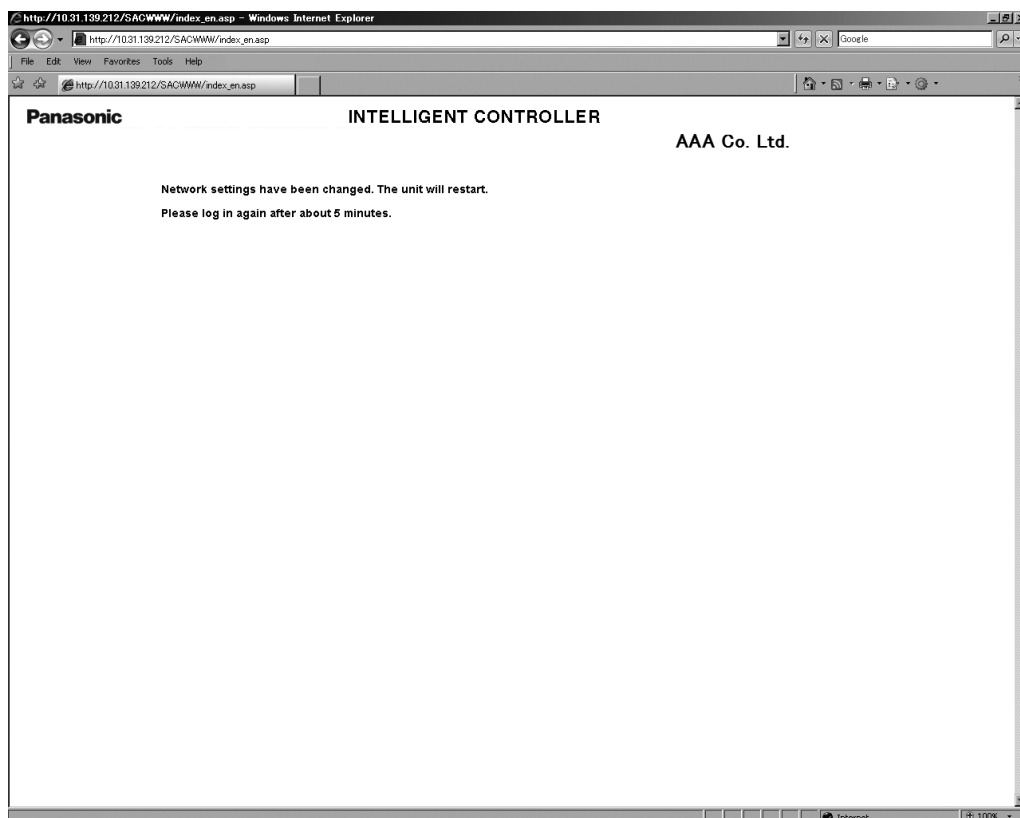
If a value that is outside the input range or input limitations is set, the window below appears.



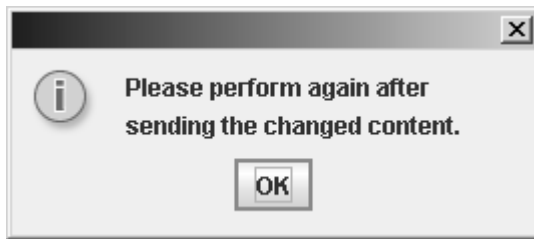
If the network settings have been changed when the “Send” button is clicked, the window below appears. Always check there is no problem restarting the Intelligent Controller unit.



When “YES” is clicked for submission, the screen changes as shown below, and the Intelligent Controller unit restarts.



When a mail test is sent, the window below appears when the mail settings have been changed.



In this case, either click the “Send” button to enable the mail setting changes or click the “Cancel” button to disable the changes, and then send the mail test again.

If the Intelligent Controller unit is processing (check configuration, cut-off, backup, etc.), this screen cannot be displayed or updated, mail test cannot be sent, and setting change “Send” cannot be performed.

If the Intelligent Controller unit is displaying the initial setting screen (main menu 5) or the Settings screen (main menu 6), setting change “Send” cannot be performed. In either case, the following window appears.



3-10-1. Server details

When you click the “Server details” button from the [WEB settings] screen, a screen such as shown below appears.

To [3-10-1-1 Receiving server settings] screen

For details on the settings, refer to the operation manual for the Intelligent Controller.

Input values have the following restrictions.

Setting Item	Input Range	Input Character Limitations
Port number	Numbers 0 to 999999	
User ID	Up to 50 alphanumeric characters and symbols	
Password		

3-10-1-1. Receiving server settings

When you click the “Receiving server settings” button from the [Server details] screen, a screen such as shown below appears.

For details on the settings, refer to the operation manual for the Intelligent Controller.





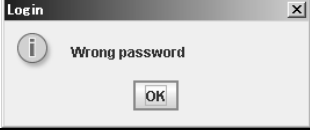
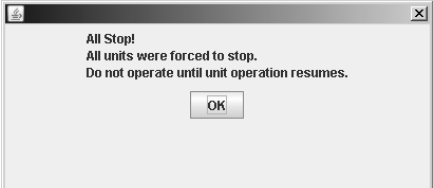
Input values have the following restrictions.

Setting Item	Input Range	Input Character Limitations
Recv. server address (POP3)	Up to 40 alphanumeric characters and symbols	Symbols are “@” “.” “_” “:” only
User ID	Up to 50 alphanumeric characters and symbols	
Password		
Port number	Numbers 0 to 999999	

4. Supplementary Information

- When connecting the Intelligent Controller via Internet, consider implementing network security measures, such as a firewall.

■ Error Messages

Error	Cause	Remedy
<p>System configuration change! (when logged in with Administrator privileges)</p> 	<p>The system configuration of the Intelligent Controller has changed.</p>	<p>This is a warning message. Wait a moment and resume operation.</p>
<p>Intelligent Controller is now processing, please wait. Please try later.</p> 	<p>The Intelligent Controller is applying settings. Access from the Web is heavy.</p>	<p>If configuring settings with the Intelligent Controller, switch to a non-settings screen (such as screen 1-n). Wait a moment and resume operation.</p>
<p>Communication error</p> 	<p>The Intelligent Controller was turned off while connected, or a cable was unplugged or the network failure.</p>	<p>Try the operation again. Verify that the Intelligent Controller is turned on, and that the network wiring connections are correct.</p>
<p>Invalid user ID</p> 	<p>The entered user ID is different from the user ID registered on the Intelligent Controller.</p>	<p>Verify the user ID that was registered to the Intelligent Controller.</p>
<p>Wrong password</p> 	<p>The entered password is different from the password registered on the Intelligent Controller.</p>	<p>Verify the password that was registered to the Intelligent Controller.</p>
<p>All Stop! All units were forced to stop. Do not operate until unit operation resumes.</p> 	<p>The external all stop input is switched on for the Intelligent Controller unit.</p>	<p>When the external all stop input is changed to OFF, the message disappears. After changing to OFF, wait for the message to disappear.</p>

Authorized representative in EU
Panasonic Testing Centre
Panasonic Marketing Europe GmbH
Winsbergring 15, 22525 Hamburg, Germany

Printed in Japan